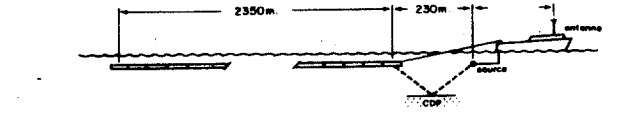


CLIENT COMPAGNIA PETROLIFERA ITALIANA  
 AREA RIMINI - ANCONA **A3901**  
 LINE BR-30  
 SP 1-552



**RECORDING PARAMETERS**

RECORDED BY GEOPHYSICAL OFFSHORE EXPLORATION  
 Party M/V Reef Eagle Date March 1978  
 Instruments LIS-888 Case-1 Gun Type  
 Filters 6-124Hz Source Delay  
 Energy Source Airgun Array Source Depth 7.6m  
 Shotpoint Interval 25m Shots per Shotpoint  
 Offset to Near Trace 230m Group Interval 90m  
 Cable Length 2400m Cable Depth 12m  
 Recorded 48 Fold Off-end Number of Groups 48  
 Record Length 5sec Sample Rate 2ms  
 Field Priority Compression Wave Recorded as Negative Number on Trace



**PROCESSING PARAMETERS**

PROCESSED BY SEFEL  
 PROCESSED 48 FOLD STACK PROCESSING SAMPLE RATE 4ms  
 DEMULTIPLEX AND BINARY GAIN RECOVERY  
 SYNTHETIC GAIN CURVE APPLICATION  
 COMMON DEPTH POINT STACK  
 BANDPASS DIGITAL FILTER 5-80Hz, 320ms Operator Length  
 DECONVOLUTION BEFORE STACK Type: W.L. Least Squares Filter Length: 240ms, 24ms/Sec  
 Design Rate: 0.2 to 2.3 m/s. Rate of 100ms Across 48 Traces  
 DYNAMIC CORRECTIONS Velocity from Constant Velocity Stacks  
 FIRST BREAK MUTING  

| Offset (m) | Time (sec) |
|------------|------------|
| 250        | 0.0        |
| 370        | 0.4        |
| 920        | 1.1        |
| 1470       | 1.5        |
| 2575       | 2.2        |

 COMMON DEPTH POINT STACK 48 Fold  
 DITHOR CORRECTION Bulk Stack Applied

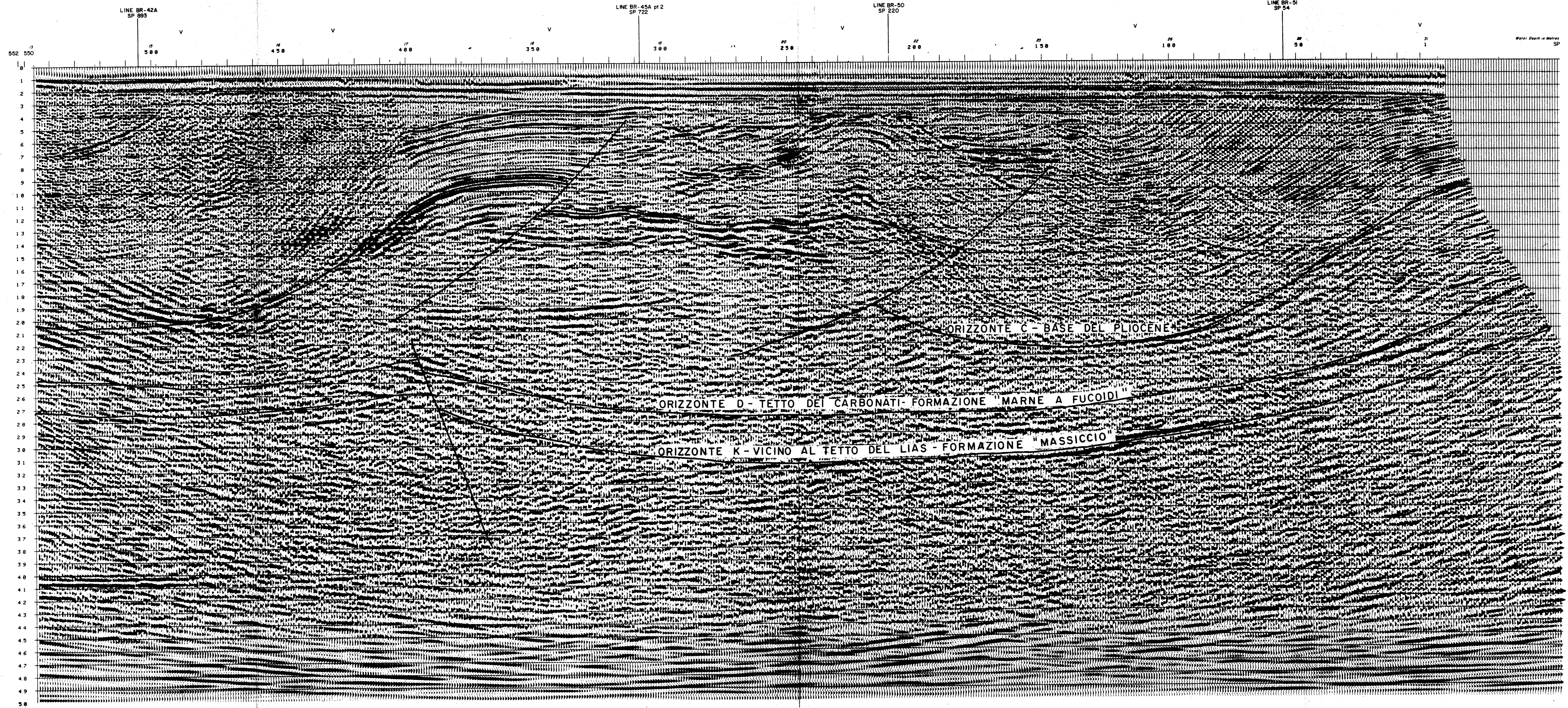
PROCESSED BY DIGICON  
 DIGICON'S WAVE EQUATION MIGRATION  
 TIME VARIANT BANDPASS DIGITAL FILTERING  

| Time (sec) | Frequency (Hz) |
|------------|----------------|
| 0.0        | 15-60          |
| 1.5        | 15-60          |
| 3.0        | 8-38           |
| 5.0        | 8-35           |

 TIME VARIANT EQUALIZATION

**DISPLAY PARAMETERS**

POLARITY CONVENTION Negative Number on Trace Displayed as Trough  
 Horizontal Scale 1:25,000  
 Vertical Scale 5cm/sec  
 Date October 1978  
 Shotpoint Location Marked on Section



SP. 1

| T    | Yms  | Yms  |
|------|------|------|
| 0    | 1450 | 1449 |
| 100  | 1450 | 2303 |
| 500  | 2120 | 2256 |
| 750  | 2820 | 2172 |
| 1000 | 2820 | 2080 |
| 1300 | 3600 | 2266 |
| 1600 | 4700 | 2272 |
| 1900 | 5200 | 2733 |
| 5000 | 6000 | 6993 |

SP. 428

| T    | Yms  | Yms  |
|------|------|------|
| 0    | 1450 | 1449 |
| 100  | 1450 | 2303 |
| 500  | 2160 | 2156 |
| 750  | 2840 | 2172 |
| 1000 | 2840 | 2080 |
| 1300 | 3600 | 2266 |
| 1600 | 4700 | 2272 |
| 1900 | 5200 | 2733 |
| 5000 | 6200 | 7662 |

SP. 113

| T    | Yms  | Yms  |
|------|------|------|
| 0    | 1450 | 1449 |
| 100  | 1450 | 2780 |
| 500  | 2160 | 2303 |
| 750  | 2440 | 2920 |
| 1100 | 2840 | 4387 |
| 1600 | 3400 | 6210 |
| 1950 | 3900 | 8544 |
| 2100 | 4700 | 5787 |
| 5000 | 5100 | 7332 |

SP. 488

| T    | Yms  | Yms  |
|------|------|------|
| 0    | 1450 | 1449 |
| 100  | 1450 | 2780 |
| 500  | 2160 | 2747 |
| 750  | 2760 | 3464 |
| 1100 | 2760 | 5705 |
| 1400 | 3600 | 7936 |
| 1600 | 4200 | 1199 |
| 1900 | 4900 | 5876 |
| 3000 | 5200 | 7936 |
| 5000 | 6200 | 7452 |

SP. 228

| T    | Yms  | Yms  |
|------|------|------|
| 0    | 1450 | 1449 |
| 100  | 1450 | 2296 |
| 500  | 2120 | 2215 |
| 700  | 2240 | 2737 |
| 1000 | 2400 | 3166 |
| 1500 | 2880 | 5503 |
| 2000 | 3600 | 8220 |
| 3100 | 4700 | 7244 |
| 5000 | 5800 | 7244 |

SP. 343

| T    | Yms  | Yms  |
|------|------|------|
| 0    | 1450 | 1449 |
| 100  | 1450 | 2350 |
| 500  | 2200 | 2710 |
| 900  | 2440 | 3029 |
| 1200 | 2600 | 3117 |
| 1400 | 2680 | 3117 |
| 1650 | 3200 | 5230 |
| 1750 | 4000 | 9200 |
| 1950 | 4800 | 6365 |
| 3000 | 5400 | 7236 |
| 5000 | 6200 | 7236 |