

CLIENT COMPAGNIA PETROLIFERA ITALIANA

AREA RIMINI - ANCONA

LINE BR-30

SP 1-552

A3921

LINE BR-42A
SP 593

LINE BR-45A pt 2
SP 722

LINE BR-50
SP 220

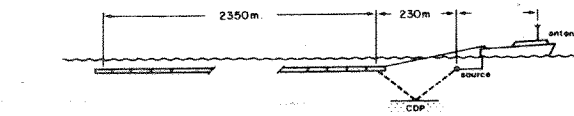
LINE BR-51
SP 54

Water Depth in Meters
SP

RECORDING PARAMETERS

RECORDED BY GEOPHYSICAL OFFSHORE EXPLORATION

Party	M/V Geol Egede	Date	March 1978
Instruments	LRS-888 Cobo-1	Gain Type	
Filters	5-124Hz	Source Delay	
Energy Source	Airgun Array	Source Depth	7.6m
Shotpoint Interval	25m	Shots per Shotpoint	1
Offset to Near Trace	230m	Group Interval	50m
Cable Length	2400m	Cable Depth	12m
Record Length	48 Fold Off-end	Number of Groups	48
Field Length	5 sec	Sample Rate	25m
Field Polarity	Compression Wave Recorded as Negative	Number on Tape	



PROCESSING PARAMETERS

PROCESSED BY SEFEL

PROCESSED 48 FOLD STACK	PROCESSING SAMPLE RATE	4ms
DEMULTIPLER AND BINARY GAIN RECOVERY		
SYNTHETIC GAIN CURVE APPLICATION		
COMMON DEPTH POINT GATHER		
BANDPASS DIGITAL FILTER	5 - 60 Hz, 320ms Operator Length	
DECONVOLUTION BEFORE STACK	Type: Wilkinson Squares Filter Length: 240ms, 0.1ms Ops	
Design Gates	Date: 0 2 h 2 3 sec	
DYNAMIC CORRECTIONS: Velocities from Constant Velocity Stacks	Slope of 1300ms Across 48 Traces	
FIRST BREAK MUTING		

Offset (m)	Time (sec)
320	0 0
370	0 4
920	1 1
1470	1 5
2575	2 2

COMMON DEPTH POINT STACK 48 Fold
DATUM CORRECTION: Bulk Static Applied

PROCESSED BY DIGICON

DIGICON'S WAVE EQUATION MIGRATION		
TIME VARIANT BANDPASS DIGITAL FILTERING		
Time (secs)	Frequency (Hz)	
0 0	15-60	
1 5	15-60	
3 0	8-35	
5 0	8-35	

TIME VARIANT EQUALIZATION

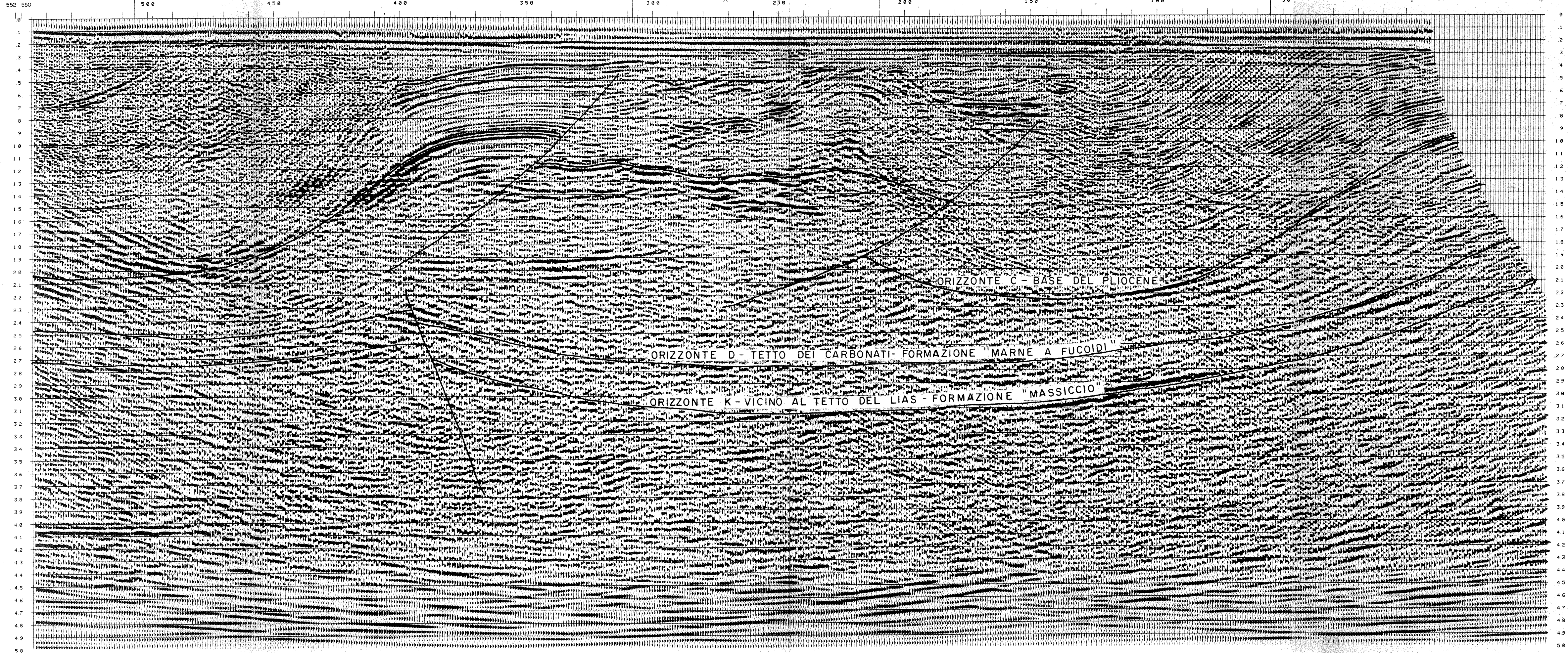
DISPLAY PARAMETERS

POLARITY CONVENTION: Negative Number on Tape Displayed as Trough
Horizontal Scale: 1:25,000
Vertical Scale: 5cm/sec
Date: October 1978
Shoppoint Location Marked on Section



digicon

PROCESSED BY digital exploration limited east grinstead england



SP. 1

T	Yms	Yint
0	1450	1449
100	1450	2301
500	2160	3158
750	2520	3680
1000	2900	3811
1300	3600	5266
1600	4100	5287
2300	4700	5844
3100	5300	6733
5000	6000	6993

SP. 428

T	Yms	Yint
0	1450	1449
100	1450	2301
500	2160	3158
750	2660	3295
1150	2840	4903
1400	3400	5710
2000	4400	6311
3200	5200	6311
5000	6200	7662

SP. 113

T	Yms	Yint
0	1450	1449
100	1450	2280
500	2160	2747
750	2360	3464
1100	2760	5705
1400	3600	7099
1600	4200	7199
1900	4900	5826
3000	5200	5826
5000	6000	7332

SP. 488

T	Yms	Yint
0	1450	1449
100	1450	2747
500	2160	3464
750	2360	5705
1100	2760	7099
1400	3600	7199
1600	4200	5826
1900	4900	5826
3000	5200	7452
5000	6200	7452

SP. 228

T	Yms	Yint
0	1450	1449
100	1450	2256
500	2120	2515
700	2240	2737
1000	2400	3166
1500	2680	3548
2000	3600	5503
3100	4700	6220
5000	5800	7244

SP. 343

T	Yms	Yint
0	1450	1449
100	1450	2350
500	2200	2710
900	2440	3029
1200	2600	3117
1400	2680	5230
1650	3200	10537
1750	4000	9200
1950	4800	9200
3000	5400	6365
5000	6200	7236