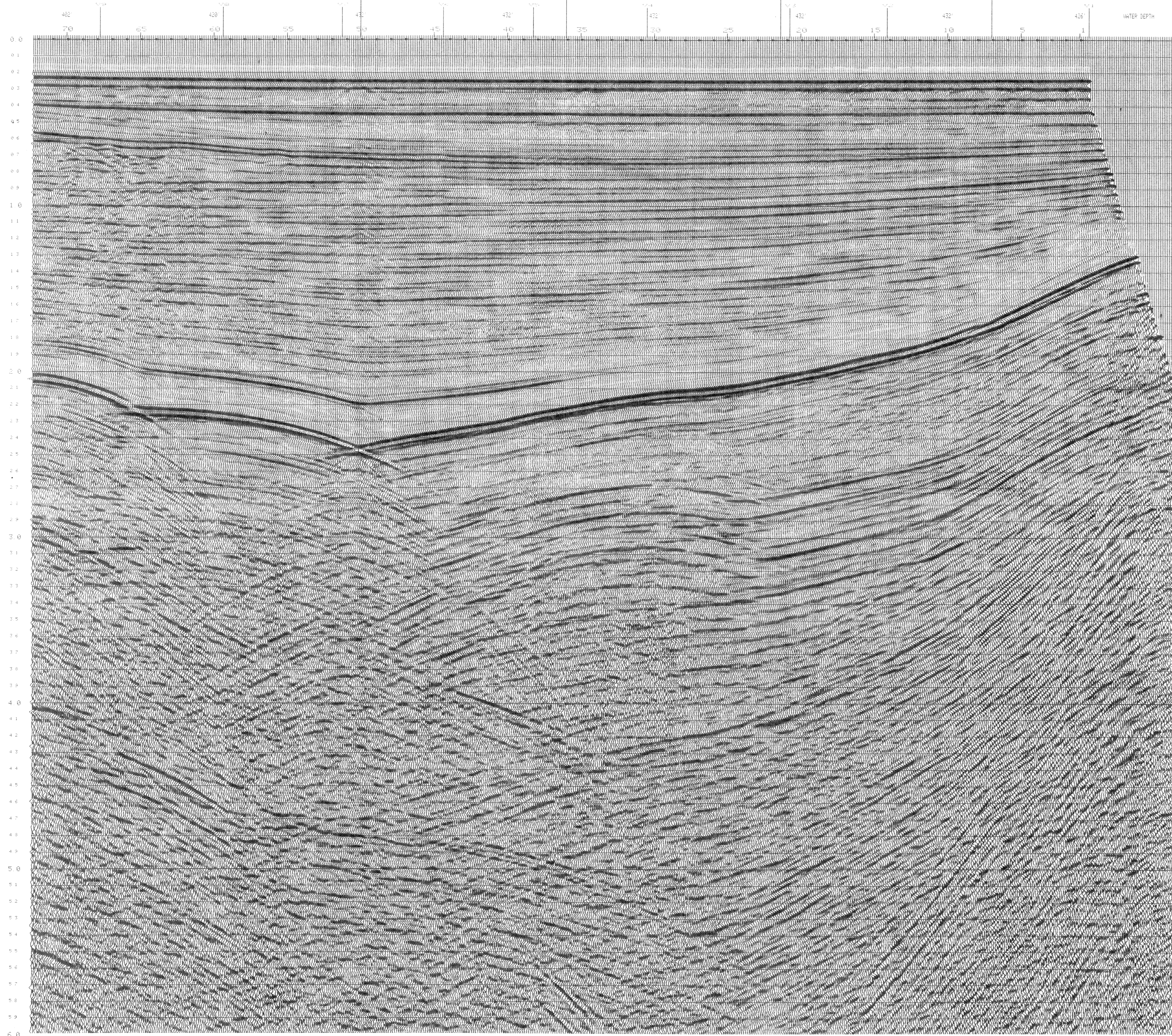


LINE 10-61-07 LINE 11-49-07 LINE 12-35-47 LINE 13-27-07



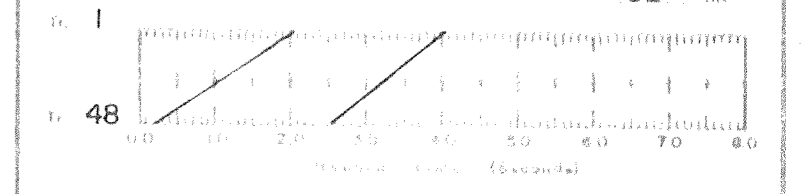
PROCESSED FOR Line No
COMPAGNIA PETROLIFERA ITALIANA **6**
 DATE 4/76

Processed by
GEOPHYSICAL DATA PROCESSING CENTER, Inc.
 HOUSTON DATA CENTER
 SEISA & GDPC
 Subsidiary of
 Whitehall Electronics Corporation

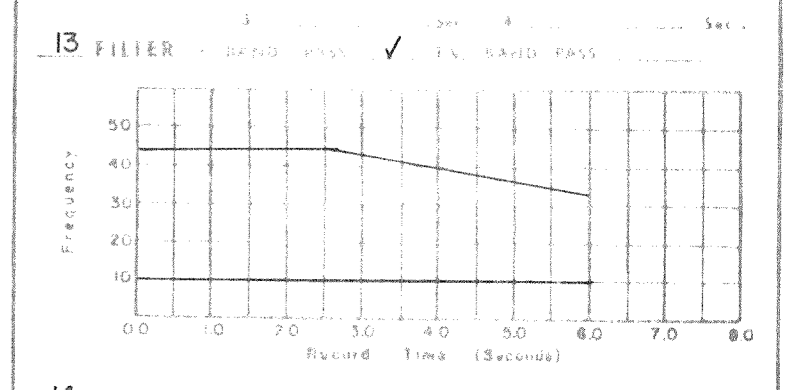
AREA ADRIATIC SEA
 LOCATION OFFSHORE GIULIANOVA, ITALY
 MOTOR VESSEL SEISMIC SURVEYOR
 DATE RECORDED 1/76

RECORDING INFORMATION
 ENERGY SOURCE AIR GUNS
 TYPE CABLE MULTIDYNE CENTURY DEPTH 35'
 INSTRUMENTS DDS 888 COBALT
 SAMPLE RATE 4 CHANNELS 18 BINARY
 TRACES 6 GROUPS 78
 DIRECTION SOUTHWEST
 SHOTPOINT INTERVAL 200m GROUP INTERVAL 50m GROUP 32

PROCESSING SEQUENCE
 1 REFORMAT SOURCE RATE 4
 2 BINARY DATA REVERSE
 3 STEREO RELAYED DATA
 4 TRACE 48 SECTORS DISPLAYED
 5 AUTOMATIC GAIN CONTROL
 6 CONSTANT VELOCITY SUPERRESOLUTION
 7 SINGLE CHANNEL SUPERRESOLUTION
 8 COMMON GATE WIDTHS DISPLAYED
 9 DECONVOLUTION VELOCITY 120 M/S
 10 FILTER VELOCITY 32 M/S



9 FILTER VELOCITY 32 M/S
 10 FILTER VELOCITY 32 M/S
 11 FILTER VELOCITY 32 M/S
 12 DECONV. AFTER DECONV. VELOCITY 200 M/S
 GATE 350-3550



14 TRACE EQUALIZATION
 POWER EQUALIZATION
 5. AGC
 ALL TIES ARE GEOLOGICAL

DISPLAY
 VERTICAL SCALE 3.75 in/sec
 HORIZONTAL SCALE 24 ft/100
 GALVO E.C. P.G. DISPLAY REEL

