



WATER DEPTH V1 426' V2 432' V3 432' V4 432' V5 432' V6 432' V7 432' V8 426'

LINE 10 (75.6) LINE 11 (34.7) LINE 12 (71.0) LINE 13 (72.1)

1 5 10 15 20 25 30 35 40 45 50 55 60 65 70 74

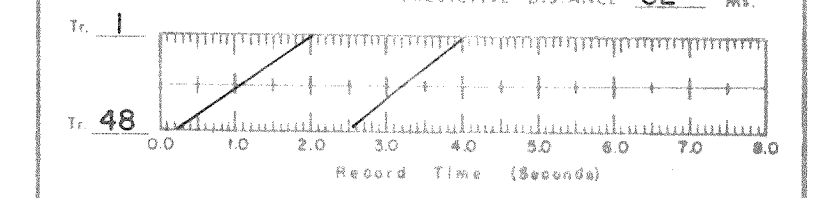
PROCESSED FOR Line No. 5
 COMPAGNIA PETROLIFERA ITALIANA
 DATE 4/76

GEOPHYSICAL DATA PROCESSING CENTER, Inc.
 HOUSTON DATA CENTER
 SEI SA & GDPC
 Whitehall Electronics Corporation

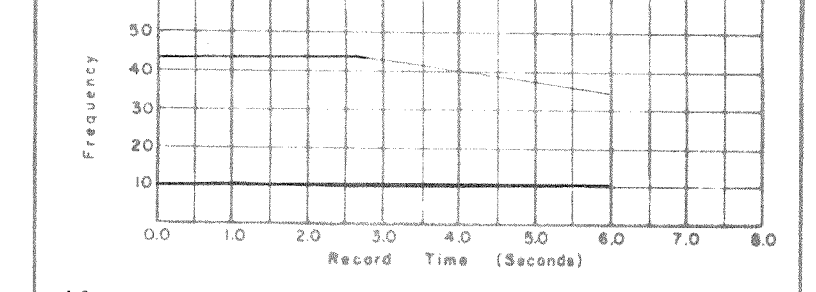
AREA ADRIATIC SEA
 LOCATION OFFSHORE GIULIANOVA, ITALY
 MOTOR VESSEL SEISMIC SURVEYOR
 DATE RECORDED 1/76

RECORDING INFORMATION
 ENERGY SOURCE AIR GUNS
 TYPE CABLE MULTIDYNE CENTURY DEPTH 35'
 INSTRUMENTS DDS 888 COBAI
 SAMPLE RATE 4 M. GAIN MODE BINARY
 FILTER L.C. 6 H. SLOPE 18 dB/oct.
 H.C. 62 H. SLOPE 78 dB/oct.
 DIRECTION RECORDED NORTHEAST
 SHOTPOINT INTERVAL 200m POP INT. 25m
 GROUP INTERVAL 50m GEO/GROUP 32

PROCESSING SEQUENCE
 1. REFORMAT SAMPLE RATE 4 M.
 2. BINARY GAIN RECOVERY
 3. SUM RECORDS INTO ONE
 4. TRACE 48 SECTION DISPLAYED
 5. AUTOMATIC VELOCITY DETERMINATION
 6. CONSTANT VELOCITY SCANS
 7. SINGLE COVERAGE DISPLAYED
 8. COMMON DEPTH POINTS DISPLAYED
 9. DECONVOLUTION OPERATOR 120 M.
 PREDICTIVE DISTANCE 32 M.

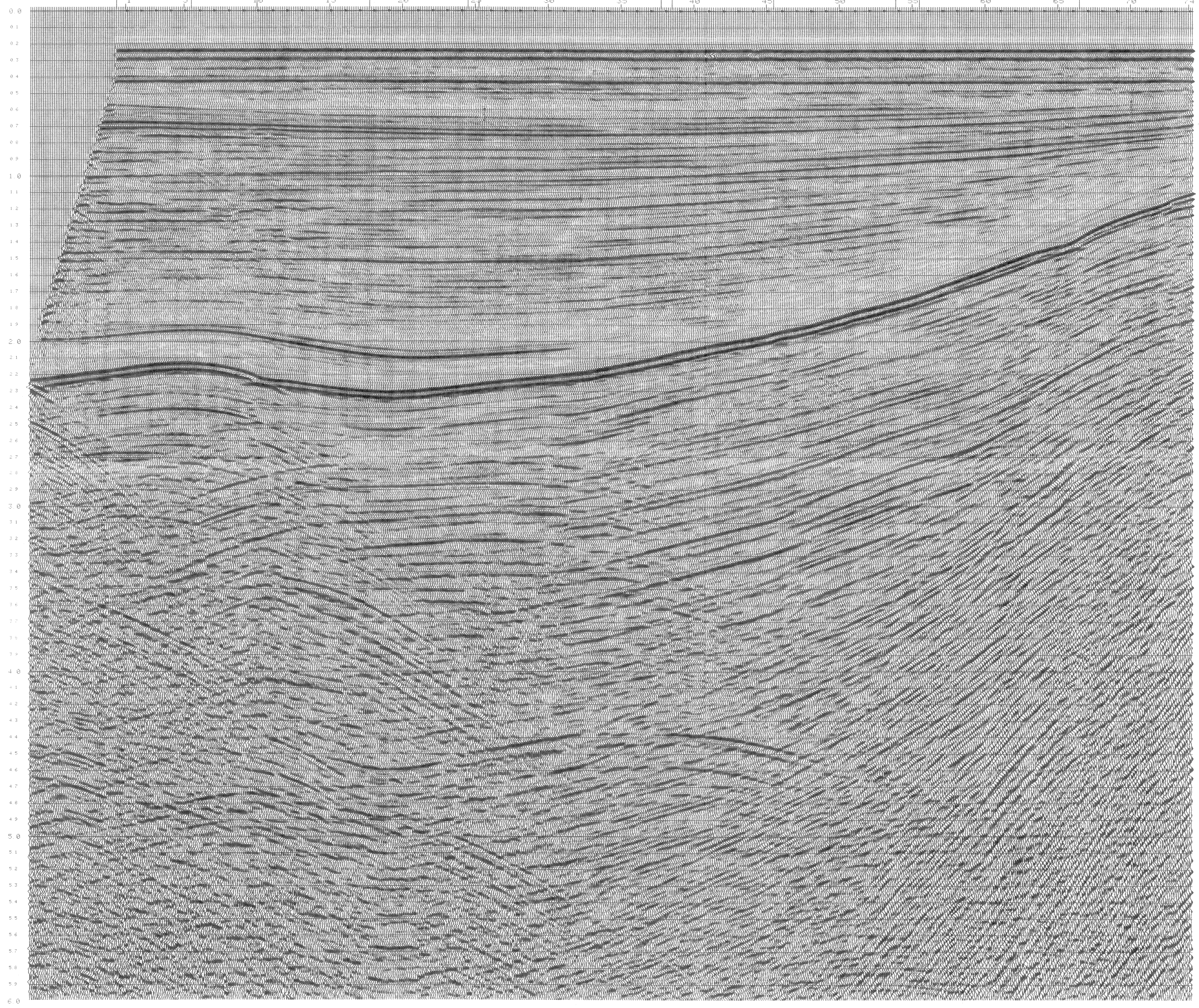
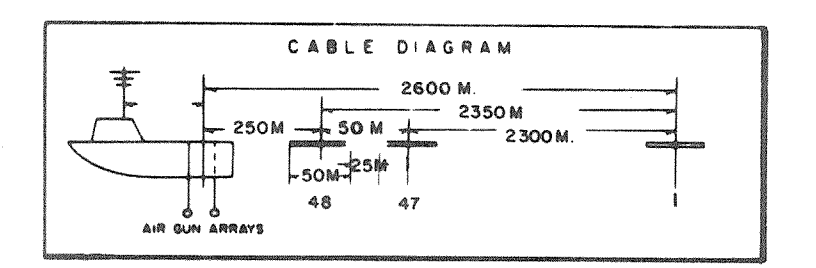


9. NMO CORRECTION
 10. MUTE
 11. STACK 48 FOLD
 12. DECON. AFTER STACK OPERATOR 200 M.
 PREDICTIVE DISTANCE 32 M.
 GATES: 1. 350-3550 Sec. 2. Sec.
 13. FILTER: BAND PASS 1.V. BAND PASS



14. TRACE EQUALIZATION
 POWER EQUALIZATION
 5. AGC
 ALL TIES ARE GEOLOGICAL

DISPLAY
 VERTICAL SCALE 3.75 in./Sec.
 HORIZONTAL SCALE 24 Tr./in.
 GALVO E.G. F.G. DISPLAY REEL #



0.0
0.1
0.2
0.3
0.4
0.5
0.6
0.7
0.8
0.9
1.0
1.1
1.2
1.3
1.4
1.5
1.6
1.7
1.8
1.9
2.0
2.1
2.2
2.3
2.4
2.5
2.6
2.7
2.8
2.9
3.0
3.1
3.2
3.3
3.4
3.5
3.6
3.7
3.8
3.9
4.0
4.1
4.2
4.3
4.4
4.5
4.6
4.7
4.8
4.9
5.0
5.1
5.2
5.3
5.4
5.5
5.6
5.7
5.8
5.9
6.0