



LINE 10-90 4

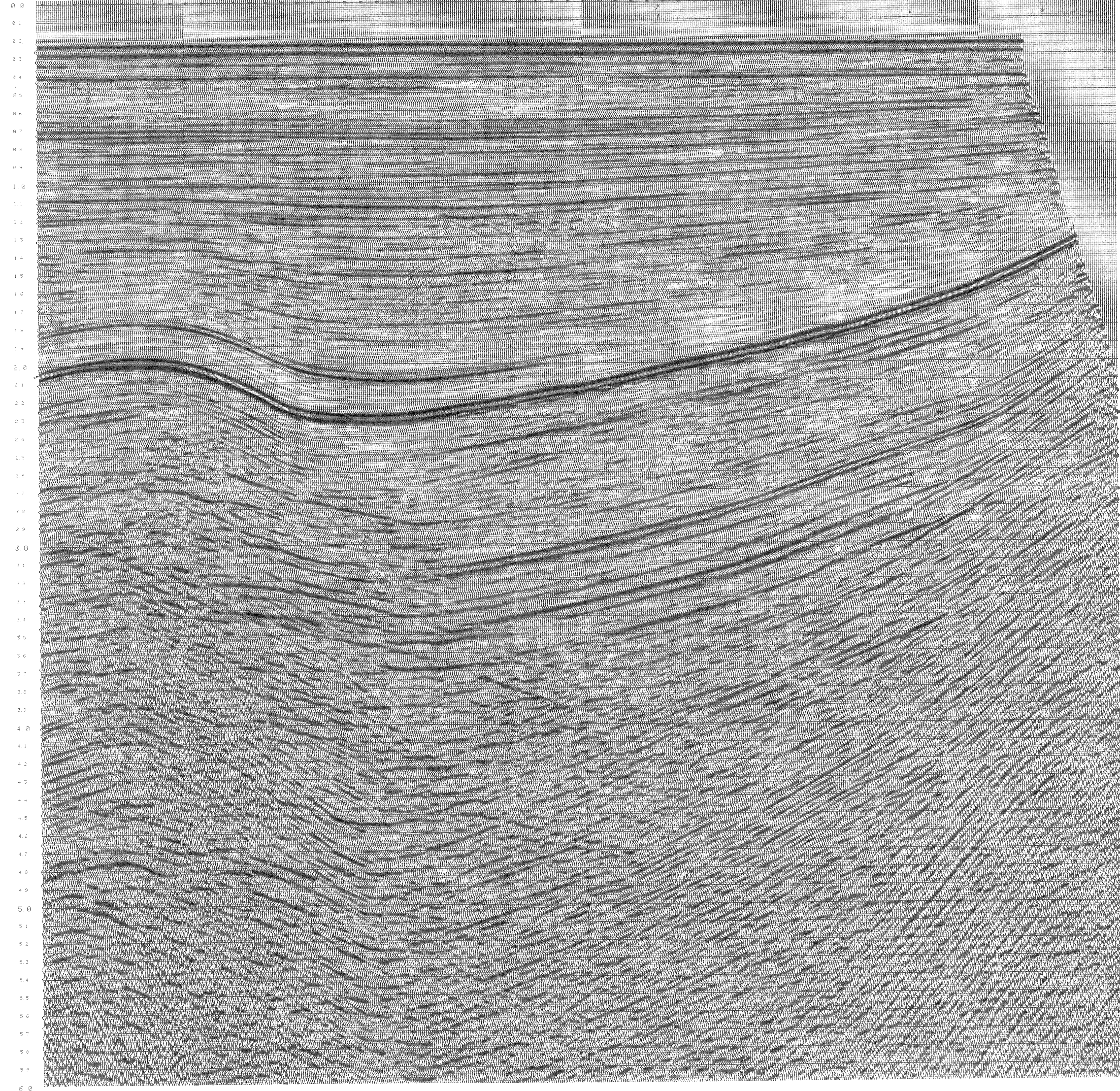
LINE 11-20 6

LINE 12-85 6

LINE 13-58 4

414' 55 414' 50 45 414' 40 35 414' 30 25 420' 20 15 420' 10 5 420' 1

WATER DEPTH



0.0  
0.1  
0.2  
0.3  
0.4  
0.5  
0.6  
0.7  
0.8  
0.9  
1.0  
1.1  
1.2  
1.3  
1.4  
1.5  
1.6  
1.7  
1.8  
1.9  
2.0  
2.1  
2.2  
2.3  
2.4  
2.5  
2.6  
2.7  
2.8  
2.9  
3.0  
3.1  
3.2  
3.3  
3.4  
3.5  
3.6  
3.7  
3.8  
3.9  
4.0  
4.1  
4.2  
4.3  
4.4  
4.5  
4.6  
4.7  
4.8  
4.9  
5.0  
5.1  
5.2  
5.3  
5.4  
5.5  
5.6  
5.7  
5.8  
5.9  
6.0

PROCESSED FOR Line No. **4**  
**COMPAGNIA PETROLIFERA ITALIANA**  
 DATE 4/76

Processed By  
 GEOPHYSICAL DATA PROCESSING CENTER, INC.  
 HOUSTON DATA CENTER  
 SEISA & GDPC  
 Subsidiaries of  
 Whitehall Electronics Corporation

AREA ADRIATIC SEA  
 LOCATION OFFSHORE GIULIANOVA, ITALY  
 MOTOR VESSEL SEISMIC SURVEYOR  
 DATE RECORDED 1/76

RECORDING INFORMATION  
 ENERGY SOURCE AIR GUNS  
 TYPE CABLE MULTIDYNE CENTURY DEPTH 35'  
 INSTRUMENTS DDS 888 COBAI  
 SAMPLE RATE 4 MS. GAIN MODE BINARY  
 FILTER I.C. 6 SLOPE 18 dB/oct  
 H.C. 62 SLOPE 78 dB/oct  
 DIRECTION RECORDED SOUTHWEST  
 SHOTPOINT INTERVAL 200m POP INT. 25m  
 GROUP INTERVAL 50m GEO/GROUP 32

PROCESSING SEQUENCE  
 1. REFORMAT SAMPLE RATE 4 MS.  
 2. BINARY GAIN RECOVERY  
 SUM        RECORDS INTO ONE  
 3. TRACE 48 SECTION DISPLAYED  
 6. AUTOMATIC VELOCITY DETERMINATION  
 7. CONSTANT VELOCITY SCANS  
 8. SINGLE COVERAGE DISPLAYED  
 COMMON DEPTH POINTS DISPLAYED  
 4. DECONVOLUTION: OPERATOR 120 MS.  
 PREDICTIVE DIST. 32 MS.

9. NMO CORRECTION  
 10. MUTE  
 11. STACK 48 FOLD  
 12. DECON. AFTER STACK OPERATOR 200 MS.  
 PREDICTIVE DISTANCE 32 MS.  
 GATES 350-3550 SER.         
 SER.       

13. FILTER: BAND PASS  EQ. BAND PASS

14. TRACE EQUALIZATION  
 POWER EQUALIZATION  
 5. AGC  
 ALL TIES ARE GEOLOGICAL

DISPLAY  
 VERTICAL SCALE 3.75 IN./SEC.  
 HORIZONTAL SCALE 24 TR./IN.  
 GALVO       , E.G.       , P.G.       , DISPLAY REEL       

