



LINE 11-05 07 LINE 12-102 67 LINE 13-42 57

WATER DEPTH 396' 396' 396' 402' 408' 414' 414'

1 5 10 15 20 25 30 35 40 45 50 55

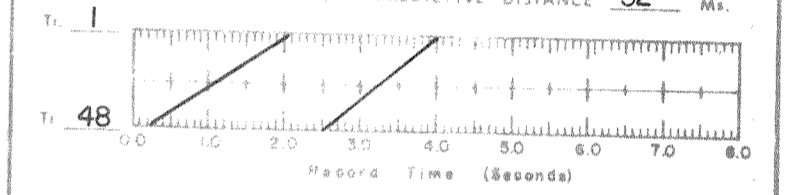
PROCESSED FOR Line No.
COMPAGNIA PETROLIFERA ITALIANA **3**
 DATE **4/76**

Processed By
 GEOPHYSICAL DATA PROCESSING CENTER, Inc.
 HOUSTON DATA CENTER
 SEISA & GDPC
 Subsidiary of
 Whitehall Electronics Corporation

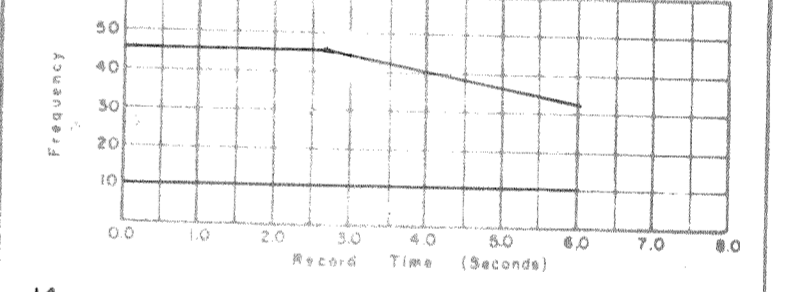
AREA **ADRIATIC SEA**
 LOCATION **OFFSHORE GIULIANOVA, ITALY**
 MOTOR VESSEL **SEISMIC SURVEYOR**
 DATE RECORDED **1/76**

RECORDING INFORMATION
 ENERGY SOURCE **AIR GUNS**
 TYPE CABLE **MULTIDYNE CENTURY DEPTH 35'**
 INSTRUMENTS **DDS 888 COBALT**
 SAMPLE RATE **4** ms. GAIN MODE **BINARY**
 FILTER **6** ms. HOPF **18** dB/oct.
 H.P. **62** ms. HOPF **78** dB/oct.
 DIRECTION RECORDED **NORTHEAST**
 SHOTPOINT INTERVAL **200m** POP INT **25m**
 GROUP INTERVAL **50m** GEO/GROUP **32**

PROCESSING SEQUENCE
 1 REFORMAT SAMPLE RATE **4** ms.
 2 BINARY GAIN RECOVERY
 3 TRACE **48** RECORDS INTO ONE
 4 TRACE **48** SECTION DISPLAYED
 5 AUTOMATIC VELOCITY DETERMINATION
 6 CONSTANT VELOCITY SCANS
 7 SINGLE COVERAGE DISPLAYED
 8 COMMON DEPTH POINTS DISPLAYED
 9 DECONVOLUTION OPERATOR **120** ms.
 PREDICTIVE DISTANCE **32** ms.

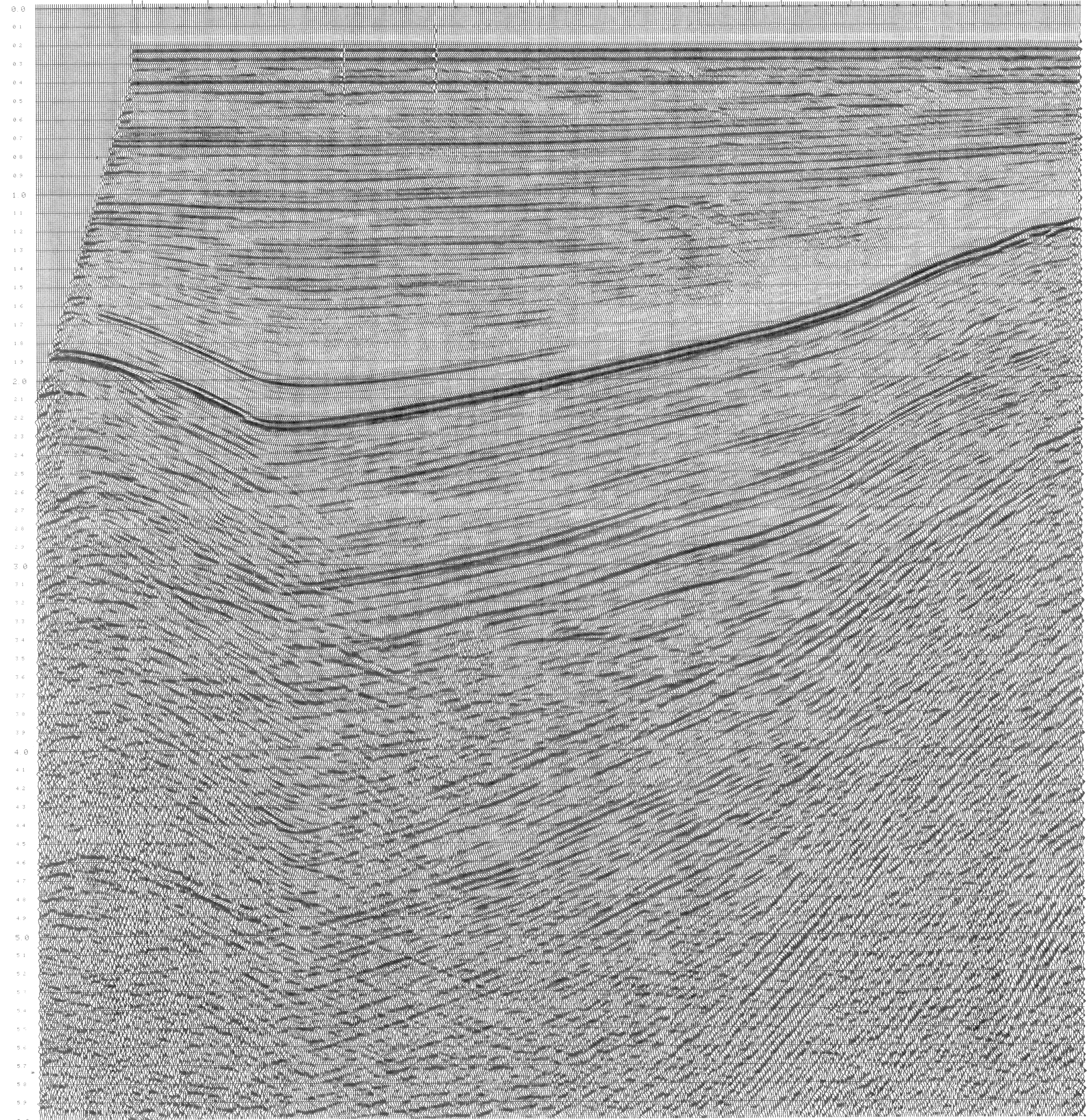
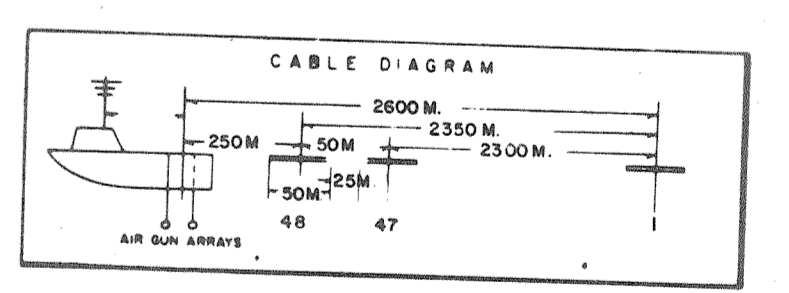


9. NMO CORRECTION
 10. MUTE
 11. STACK **48** FOLD
 12. DECON. AFTER STACK OPERATOR **200** ms.
 PREDICTIVE DISTANCE **32** ms.
 GATES 1-350-3550 Sec. 2
 3 Sec. 4
 13. FILTER BAND PASS LV BAND PASS



14. TRACE EQUALIZATION
 POWER EQUALIZATION
 5. AGC
 ALL TIES ARE GEOLOGICAL

DISPLAY
 VERTICAL SCALE **3.75** in./sec
 HORIZONTAL SCALE **24** Tr./in.
 GALVO E.G. P.D. DISPLAY REEL #



0.0
0.1
0.2
0.3
0.4
0.5
0.6
0.7
0.8
0.9
1.0
1.1
1.2
1.3
1.4
1.5
1.6
1.7
1.8
1.9
2.0
2.1
2.2
2.3
2.4
2.5
2.6
2.7
2.8
2.9
3.0
3.1
3.2
3.3
3.4
3.5
3.6
3.7
3.8
3.9
4.0
4.1
4.2
4.3
4.4
4.5
4.6
4.7
4.8
4.9
5.0
5.1
5.2
5.3
5.4
5.5
5.6
5.7
5.8
5.9
6.0