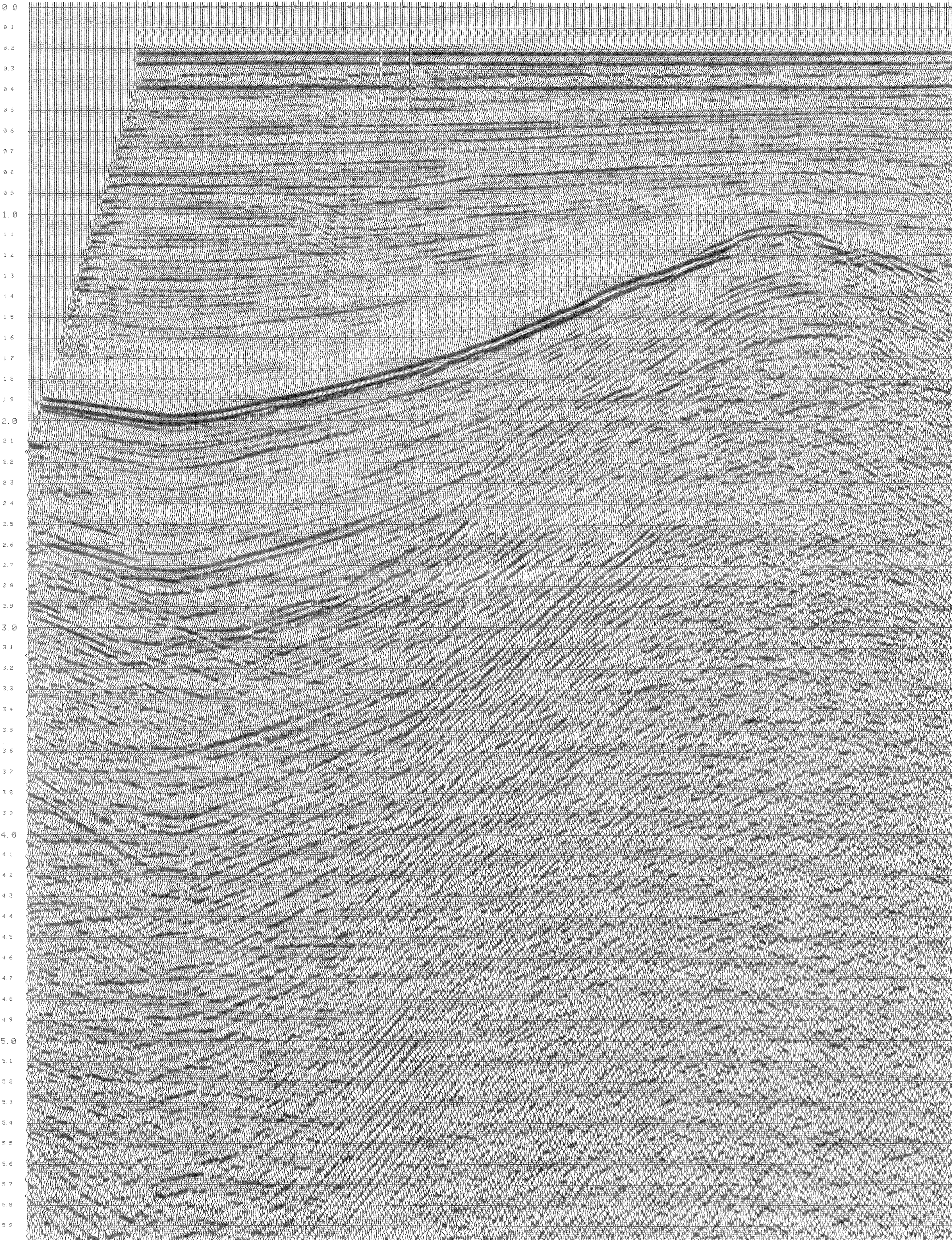




LINE 12-132.67 LINE 13-14.07

WATER DEPTH 366 366 366 366 366 366 366 366 366 366



PROCESSED FOR COMPAGNIA PETROLIFERA ITALIANA

DATE 4/76

Line No. 1

Processed By: GEOPHYSICAL DATA PROCESSING CENTER, Inc.
 3815A & GDFL
 Whitehall Electronics Corporation

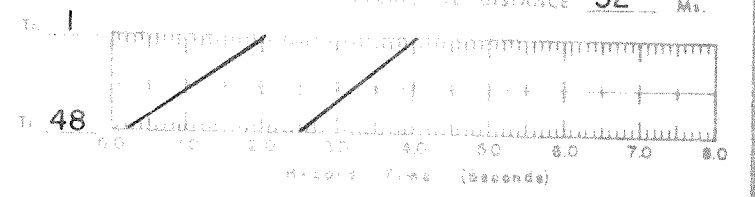
AREA ADRIATIC SEA
 LOCATION OFFSHORE GIULIANOVA, ITALY
 MOTOR VESSEL SEISMIC SURVEYOR
 DATE RECORDED 1/76

RECORDING INFORMATION

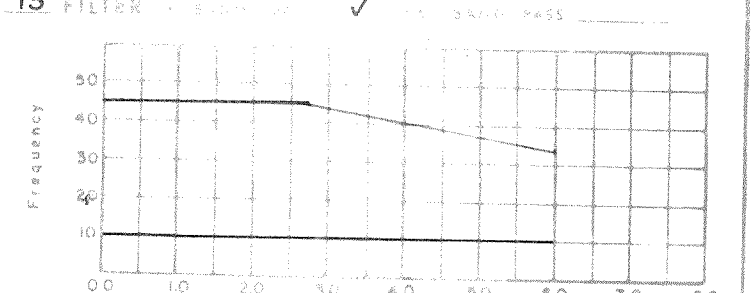
ENERGY SOURCE AIR GUNS
 TYPE CABLE MULTIDYNE CENTURY DEPTH 35'
 INSTRUMENTS DDS 888 COBAI
 SAMPLE RATE 4 MODE BINARY
 FILTER 6 18 dB/oct
 62 78 dB/oct
 DIRECTION NORTHEAST
 SHOTPOINT INTERVAL 200m GROUP IN 25m
 GROUP INTERVAL 50m GROUP/GROUP 32

PROCESSING SEQUENCE

1 REFORMAT SAMPLE RATE 4 Ms.
 2 BINARY TO ANALOG
 SUM 48 CHANNELS
 3 TRAC 48 15 SECS. 100% SIZED
 6 AUTOMATIC VELOCITY DETERMINATION
 7 CONSTANT VELOCITY SCANS
 8 ANGLE CORRECTION DISPLAYED
 COMMON DEPTH POINTS DISPLAYED
 4 DECONVOLUTION OPERATOR 120 Ms.
 DISTANCE 32 Ms.



9 NMO CORRECTION
 10 MUTE
 11 STACK 48 CHAN.
 12 DECIM AFTER STACK OPERATOR 200 Ms.
 GATE 350-3550
 DISTANCE 32 Ms.



14 TRACE EQUALIZATION
 POWER EQUALIZATION
 5 AGC
 ALL TIES ARE GEOLOGICAL

DISPLAY

VERTICAL SCALE 3.75 in./sec.
 HORIZONTAL SCALE 24 in./in.
 GALVO E.G. DISP. BY REEL

