

CLIENT COMPAGNIA PETROLIFERA ITALIANA
 AREA RIMINI - ANCONA
 LINE BR-24
 SP 1-430

RECORDING PARAMETERS

RECORDED BY GEOPHYSICAL OFFSHORE EXPLORATION
 Date: March 1978
 Instruments: LRS 888 Code 1
 Filters: 6 (24 Hz)
 Energy Source: Airgun Array
 Shotpoint Interval: 25m
 Offset to Near Trace: 20m
 Cable Length: 2400m
 Recorded: 48 Fold Off-end
 Record Length: 5secs
 Gain Type: Source Delay
 Source Depth: 7.6m
 Shots per Shotpoint: 1
 Geared Interval: 50m
 Cable Depth: 12m
 Number of Groups: 48
 Sample Rate: 2ms

PROCESSING PARAMETERS

PROCESSED BY SEFEL
 PROCESSED 48 FOLD STACK
 DEMULTIPLY AND BINARY GAIN RECOVERY
 SYNTHETIC GAIN CURVE APPLICATION
 COMMON DEPTH POINT GATHER
 BANDPASS DIGITAL FILTER: 5 60 Hz 500ms Operator Length
 DECONVOLUTION BEFORE STACK: Type: No. Least Squares Filter Length: 240ms 4ms
 Design: 0 2 to 2 3 sec
 DYNAMIC CORRECTIONS: velocities from Common Velocity Stacks
 FIRST BREAK MITTING: Offset (m) Time (sec)
 12 4
 14 4
 16 4
 18 4
 20 4
 22 4
 24 4
 26 4
 28 4
 30 4
 32 4
 34 4
 36 4
 38 4
 40 4
 42 4
 44 4
 46 4
 48 4
 50 4
 COMMON DEPTH POINT STACK: 48 Fold
 DATUM CORRECTION: Bulk Static Applied

PROCESSED BY DIGICON
 DIGICON'S WAVE EQUATION MIGRATION
 TIME VARIANT BANDPASS DIGITAL FILTERING
 Time (sec) Frequency (Hz)
 0 0
 1 0
 3 0.35
 5 0.35
 TIME VARIANT EQUALIZATION

DISPLAY PARAMETERS

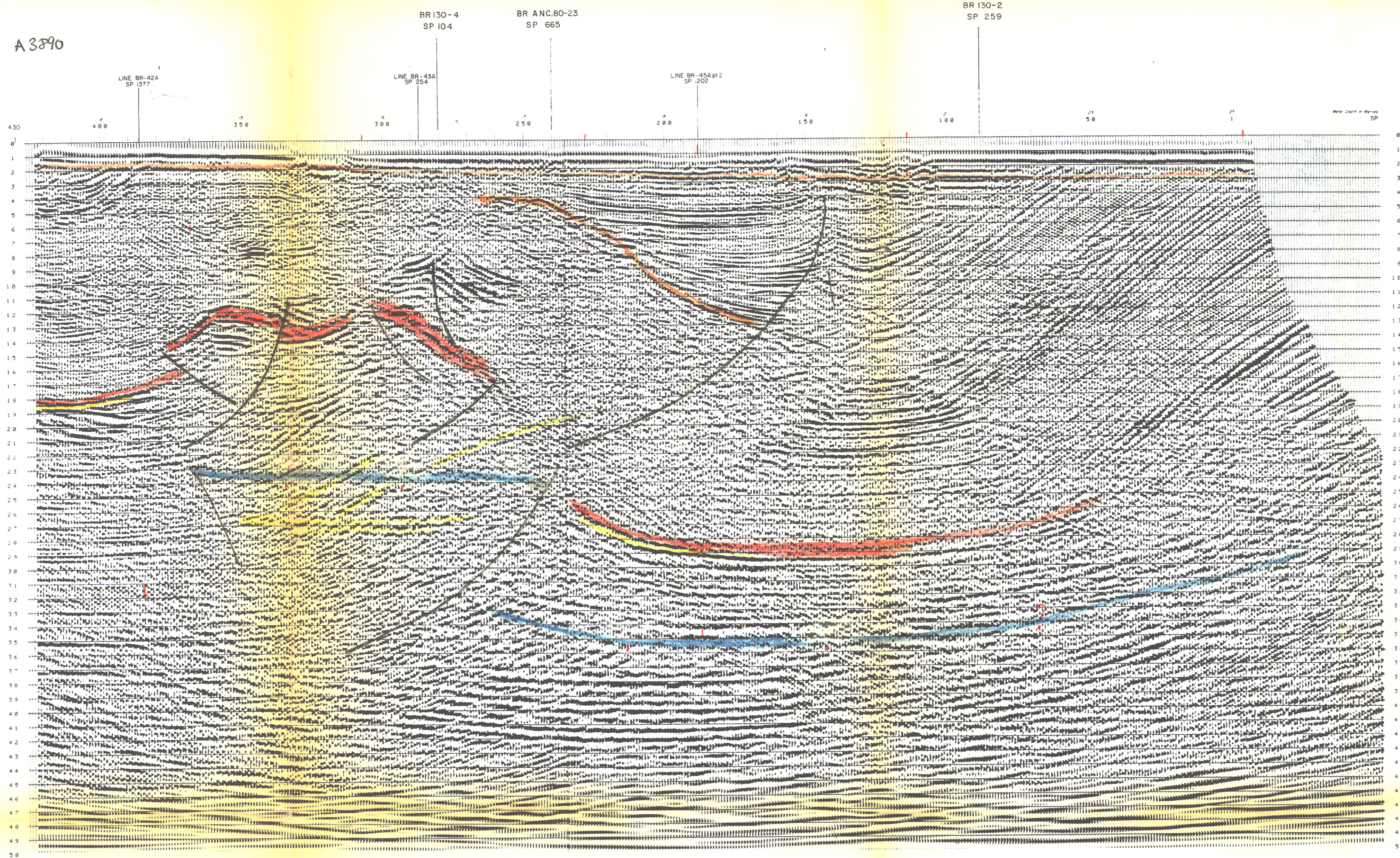
POLARITY CONVENTION: Negative Number in Trace Interpreted as Trough
 Horizontal Scale: 1:1000
 Vertical Scale: 1:100
 Date: October 1978
 Shotpoint Location: Marked on Section



PROCESSED BY digital exploration limited
 east grinstead england

- BASE QUATERNARIO
- BASE PLIOCENE
- TOP SCAGLIA CALCAREA

A3890



BR 130-4 SP 104
 BR ANC.80-23 SP 665

BR 130-2 SP 259

LINE BR-42A SP 1377

LINE BR-43A SP 254

LINE BR-45A pt 2 SP 202

Water Depth in Meters SP

SP. 1

T	Yms	Yint
0	1450	1449
100	1450	1449
300	1820	2116
500	2120	2388
800	2440	2895
1200	2760	3508
1450	2920	3559
1750	3000	4592
1950	3200	4695
2350	3500	3308
4000	4800	6197
5000	5500	7687

SP. 368

T	Yms	Yint
0	1450	1449
100	1450	2162
500	2280	2941
650	2280	2801
1150	2520	2940
1400	2600	3762
1700	2840	3918
1950	3000	3918
3100	4400	6076
5000	5800	7127

SP. 113

T	Yms	Yint
0	1450	1449
100	1450	2026
350	1880	2371
500	2140	2904
700	2320	2579
900	2360	3425
1200	2680	3728
1500	2920	3728
1650	3200	5232
2500	4400	6087
3200	5000	6718
5000	5800	7000

SP. 228

T	Yms	Yint
0	1450	1449
100	1450	2016
370	1880	2438
500	2040	2548
900	2280	3131
1200	2520	3131
1650	2840	3555
2000	3000	3661
3000	4200	5909
5000	5500	7011

SP. 308

T	Yms	Yint
0	1450	1449
100	1450	2102
400	1960	2408
600	2120	3022
1000	2520	3367
1200	2680	3367
1350	2840	3889
2000	3200	3841
3000	4200	5595
5000	5500	7011