

A3889

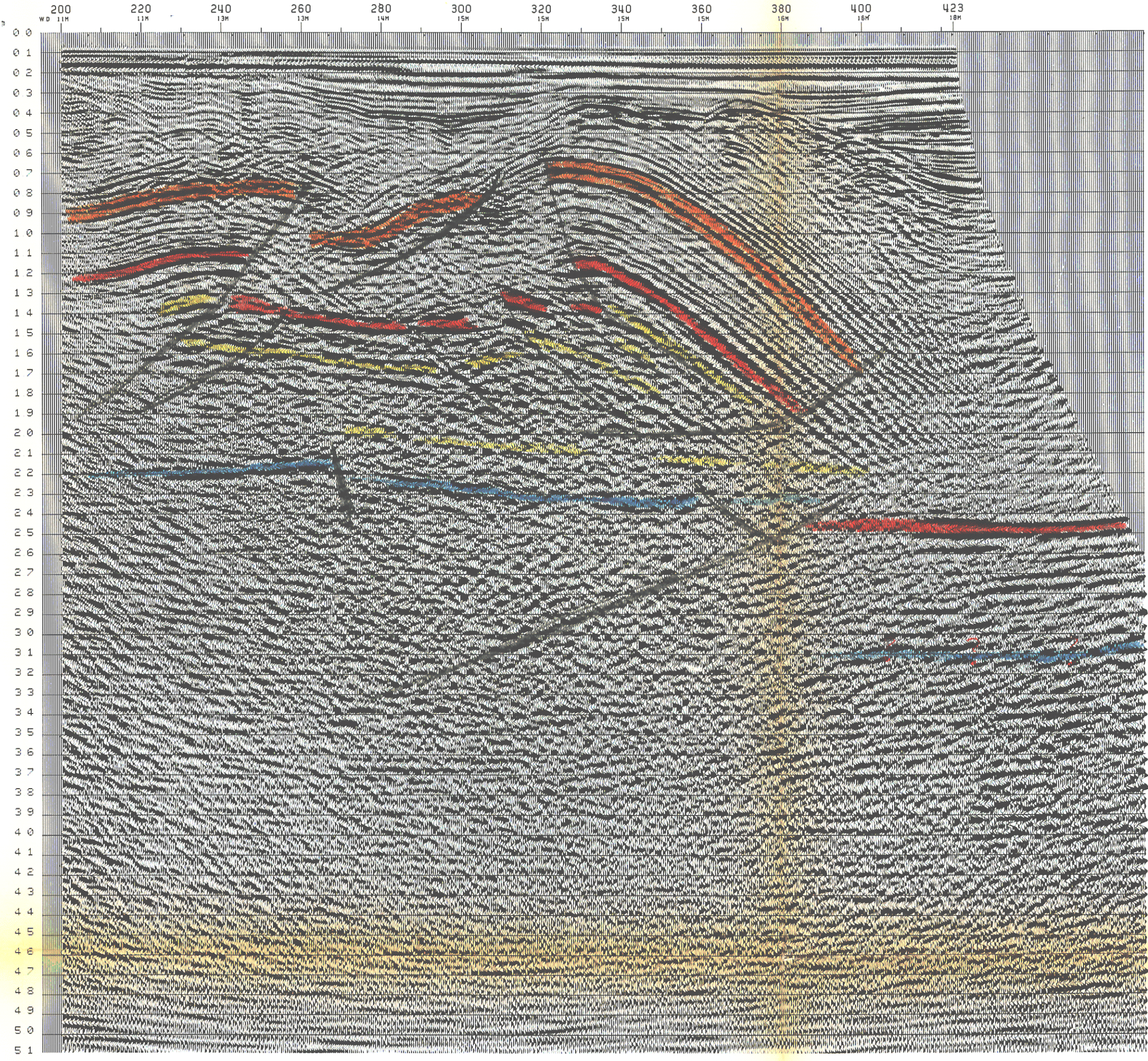
LINE: BR-ANC80-18  
S.P. 200 TO 423  
4800% DBS, MCF, MIGRATION, TVF.



LINE: BR-ANC80-18  
S.P. 200 TO 423

TIME (S)	RMS VEL	DIX INT	TIME (S)	RMS VEL	DIX INT	TIME (S)	RMS VEL	DIX INT	TIME (S)	RMS VEL	DIX INT
0.10	1480	1480	0.08	1480	1480	0.10	1480	1480	0.10	1480	1480
0.51	2060	2178	0.35	1850	1946	0.43	1810	1936	0.43	1810	1936
0.76	2300	2696	0.59	1550	2669	0.79	2090	2354	0.79	2090	2354
1.10	2450	2782	0.89	2400	3266	1.00	2370	3212	1.00	2370	3212
1.57	3060	4200	1.36	2660	3269	1.16	2740	4244	1.16	2740	4244
2.20	3550	4513	1.69	3000	3387	1.47	3070	4150	1.47	3070	4150
2.81	4150	4651	2.35	3060	3790	1.86	3560	4932	1.86	3560	4932
3.00	4620	5004	3.45	3470	4095	2.51	3890	4541	2.51	3890	4541
			3.79	3740	4938	3.15	4390	6109	3.15	4390	6109
			4.45	4120	5411	3.65	4700	6312	3.65	4700	6312
			6.00	5000	5988	6.00	5300	6116	6.00	5300	6116

BR-ANC80-23  
S.P. 366



## TOTAL MINERARIA

### WESTERN GEOPHYSICAL COMPANY OF AMERICA

<p>OFFSHORE ITALY ZONE B RIMINI-ANCONA</p>	<p>M.G.C. CONTRACT PROCESSED IN LONDON DIGITAL CENTRE SEPT 1980 DATE SHOT JULY 1980</p>
--	---

RECORDING DATA	PROCESSING SEQUENCE															
<p><b>BOAT</b></p> <p>K.V. WESTERN SEA PRIMARY NAVIGATION BY SECONDARY NAVIGATION BY MAP/SECTION LOCATION</p> <p><b>SOURCE</b></p> <p>AQUAPULSE NUMBER OF GUNS 8 GUN DEPTH 7.6M FPS PER KM 40 S.P. INTERVAL 25M</p> <p><b>INSTRUMENTS</b></p> <p>AMPLIFIER LAS 888 FILTER LO. 6HZ.1000/OCT HI. 175HZ.7000/OCT RECORD LENGTH 6 SECS SAMPLE RATE 2 MS FORMAT SEG C (NO GPS) 1600 BPI</p> <p><b>CABLE</b></p> <p>2400M STREAMER NO OF GROUPS 96 HYDROPHONES 20 PER GROUP GROUP LENGTH 23M GROUP INTERVAL 25M CABLE DEPTH 12M</p> <p><b>SCALES</b></p> <p>HORIZONTAL 1 : 12,500 VERTICAL 1 : 25,000 1 CM/SEC 1 CM/SEC</p> <p><b>LEGEND</b></p> <p>INTERSECTIONS W.D. WATER DEPTH VELOCITY ANALYSIS</p> <p>D.C. FOR M.G.C. <i>H. M. ...</i></p>	<p>PROCESSING SAMPLE RATE 4 MS</p> <p><b>DEMULTEX</b></p> <p>SUBSAMPLE TO 4 MS SAMPLE RATE</p> <p><b>PREPROCESSOR - D.B.S.</b></p> <p>(A) COMMON DEPTH FAMILY GATHER (B) GEOMETRIC SPREADING GAIN APPLIED (C) 6HZ LO-CUT PREFILTER APPLIED (D) DECONVOLUTION</p> <p>TYPE MIN. PHASE INVERSE FILTER WINDOW LENGTH 2 X 2200 MS MINIMUM PREDICTIVE LAG 12 MS LENGTH OF FILTER OPERATOR 192 MS (E) TRACE BALANCE ON OUTPUT</p> <p><b>VELOCITY ANALYSIS</b></p> <p>EXPANDED VELRMS</p> <p><b>N.M.O. - 4800Z STACK</b></p> <p>MUTE</p> <p><b>MULTICHANNEL FILTER</b></p> <p>DIP REJECT: 10 - 18 MS/TRACE</p> <p><b>MIGRATION</b></p> <p>FINITE DIFFERENCE APPROACH</p> <p><b>TIME VARIANT FILTER</b></p> <table border="1" style="width: 100%; border-collapse: collapse;"> <tr> <th>TIME (SECS)</th> <th>L.C. (HZ, DB/OCT)</th> <th>H.C.</th> </tr> <tr> <td>0.500</td> <td>10/12</td> <td>60/48</td> </tr> <tr> <td>1.500</td> <td>8/18</td> <td>80/60</td> </tr> <tr> <td>2.500</td> <td>8/18</td> <td>60/60</td> </tr> <tr> <td>4.000</td> <td>8/18</td> <td>40/60</td> </tr> </table> <p>FILTERS ARE INTERPOLATED IN TIME AND SPACE TIMES ARE SPECIFIED AT START OF LINE</p> <p><b>COMMENTS</b></p> <p>DATUM PLANE IS SEA LEVEL A GUN AND CABLE CONNECTION OF 13 MS HAS BEEN APPLIED IN THE FINAL DISPLAY. COMPRESSION PULSES NEGATED AS NEGATIVE NUMBERS ON TAPE AND PLOT AS TROUGHS (WHITE) ON PLAYBACK</p>	TIME (SECS)	L.C. (HZ, DB/OCT)	H.C.	0.500	10/12	60/48	1.500	8/18	80/60	2.500	8/18	60/60	4.000	8/18	40/60
TIME (SECS)	L.C. (HZ, DB/OCT)	H.C.														
0.500	10/12	60/48														
1.500	8/18	80/60														
2.500	8/18	60/60														
4.000	8/18	40/60														

**LINE LOCATION MAP**

ALL LINE NO'S  
PREFIXED BY  
BR-ANC80-

- BASE QUATERNARIO
- BASE PLIOCENE
- TOP SCAGLIA CALCAREA