

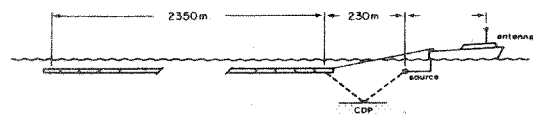
CLIENT COMPAGNIA PETROLIFERA ITALIANA
 AREA RIMINI - ANCONA
 LINE BR-30
 SP I-552



RECORDING PARAMETERS

RECORDED BY GEOPHYSICAL OFFSHORE EXPLORATION

Party	M/V. Geol. Egide	Date	March 1978
Instruments	LRS-688 Coax-1	Gain Type	
Filters	6 - 124 Hz	Source Delay	
Energy Source	Airgun Array	Source Depth	7.6 m
Shotpoint Interval	25m	Shots per Shotpoint	1
Offset to Near Trace	230m	Group Interval	50m
Cable Length	2400m	Cable Depth	62m
Recorded	48 Fold Off and	Number of Groups	48
Record Length	5 sec	Sample Rate	2cs
Field Polarity	Compression Wave Recorded as Negative Number on Tape		



PROCESSING PARAMETERS

PROCESSED BY SEPEL

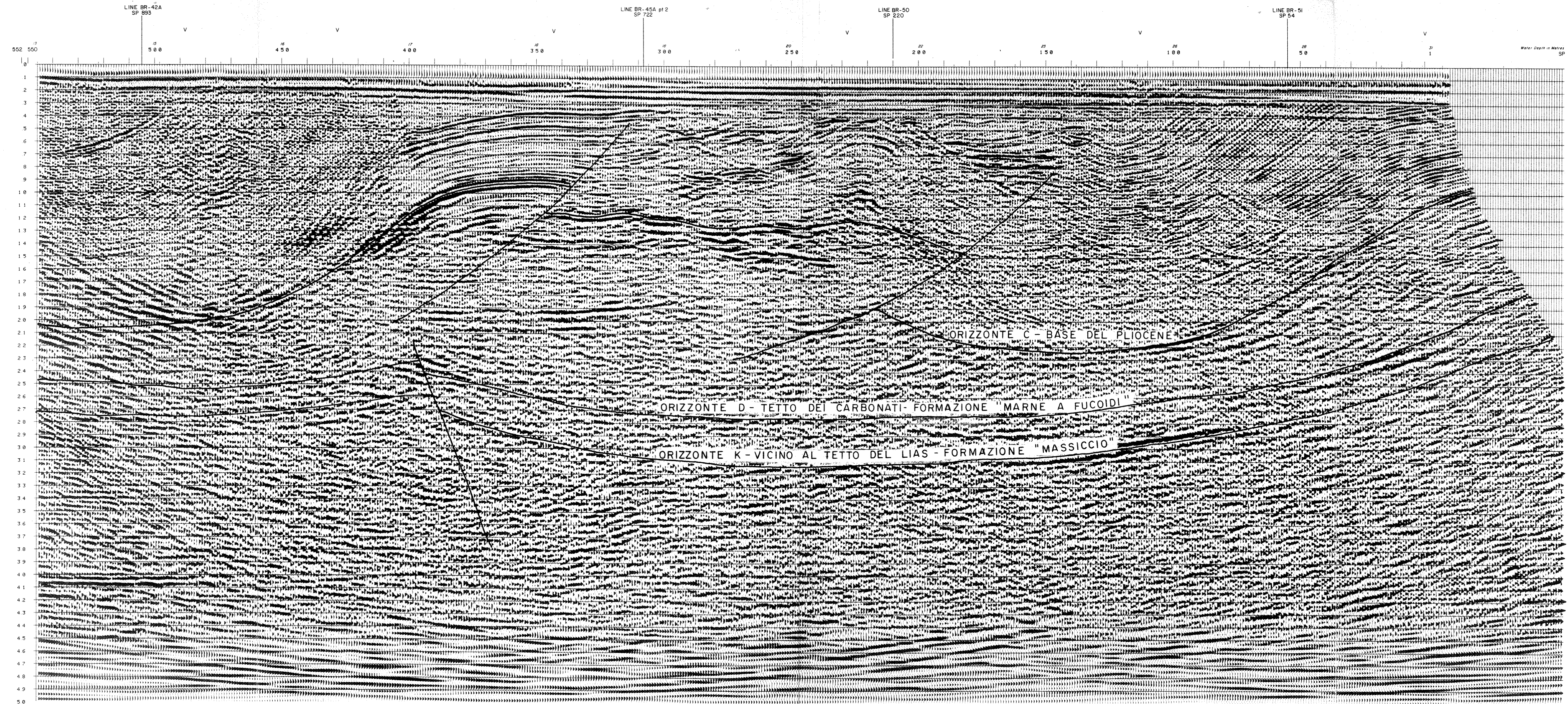
PROCESSED	48 FOLD STACK	PROCESSING SAMPLE RATE	4 ms
DEMULTIPLEX AND BINARY GAIN RECOVERY			
SYNTHETIC GAIN CURVE APPLICATION			
COMMON DEPTH POINT GATHER			
BANDPASS DIGITAL FILTER	5 - 60 Hz, 320ms Operator Length		
DECONVOLUTION BEFORE STACK	Type: W.L. Least Squares Filter Length: 240ms, 24ms Gap		
Design Gates	Gate: 0.2 to 2.3 sec		
DYNAMIC CORRECTIONS	Velocities from Constant Velocity Stacks		
FIRST BREAK MUTING			
	Offset (m)	Time (secs)	
	320	0.0	
	370	0.4	
	920	1.1	
	1470	1.5	
	2375	2.2	
COMMON DEPTH POINT STACK	48 Fold		
DATUM CORRECTION	Bulk Static Applied		

PROCESSED BY DIGICON

DIGICON'S WAVE EQUATION MIGRATION		
TIME VARIANT BANDPASS DIGITAL FILTERING		
	Time (secs)	Frequency (Hz)
	0.0	15-60
	1.0	15-60
	3.0	8-35
	5.0	8-35

DISPLAY PARAMETERS

POLARITY CONVENTION	Negative Number on Tape Displayed as Trough
Horizontal Scale	1:25,000
Vertical Scale	5cm/sec
Date	October 1978
Shotpoint Location	Marked on Section
QUALITY CONTROL	Geophysical Party Chief
	PH 4040



SP. 1

T	Yms	Yint
0	1450	1449
100	1450	2303
500	2120	2256
750	2520	3172
1000	2920	3880
1300	3600	5266
1600	4100	6227
2300	4700	8733
3100	5300	6993
5000	6000	

SP. 428

T	Yms	Yint
0	1450	1449
100	1450	2303
500	2160	3158
950	2680	3295
1250	2840	4903
1600	3400	7110
2000	4400	8311
3200	5200	8311
5000	6200	7662

SP. 113

T	Yms	Yint
0	1450	1449
100	1450	2280
500	2160	2747
750	2440	3464
1100	2840	3548
1500	3400	4387
1850	3900	6210
2100	4700	8544
3200	5100	5787
5000	6000	7332

SP. 488

T	Yms	Yint
0	1450	1449
100	1450	2280
500	2140	2747
750	2360	3464
1100	2760	5705
1400	3600	7099
1600	4200	7199
1900	4800	7199
3000	5200	5826
5000	6200	7452

SP. 228

T	Yms	Yint
0	1450	1449
100	1450	2256
700	2240	2515
1000	2400	2737
1500	2680	3156
2000	3600	5503
3100	4700	6220
5000	5800	7244

SP. 343

T	Yms	Yint
0	1450	1449
100	1450	2350
500	2200	2710
900	2440	3029
1200	2600	3117
1400	2680	5230
1650	3200	5230
1750	4000	10537
1950	4800	9200
3000	5400	6365
5000	6200	7236

A3P86