

RECORDING



PROCESSING

FIELD PARTY: P.I.G. I.  
 CONTRACTOR: P.I.G.  
 RECORDING PERIOD: 1985 - JUNE 1985

FIELD SYSTEM: DFR IV (15/16) 4 CHANNELS  
 TAPE FORMAT: SEG - 1, 3 TRACES, 15000 BPI  
 POLARITY OF SYSTEM: SEG-CODE (000)  
 COMPRESSION: NONE  
 SUBSURFACE COVERAGE: 10 FOLD

RECORD LENGTH: 7 SEC. SAMPLING RATE: 2 MSEC.  
 FILTER: LOW-CUT 12 HZ 18 DB/OCT  
 HIGH-CUT 124 HZ 20 DB/OCT  
 NOTCH FILTER 50 HZ

GAIN CONTROL: L.F.F. + CONSTANT GAIN 24 DB  
 REPEATER TYPE: SP 4 + 10 HZ  
 NO. OF GROUPS: 60, SPACING: 30 M  
 GROUP LENGTH: 40 M, 30 RECEIVERS PER GROUP

RECEIVER ARRAY:  
 ..... 40 M .....  
 \*\*\*\*\*

EMITTER ARRAY:  
 SINGLE-HOLE SHOT  
 ENERGY SOURCE: DYNAMITE  
 CHARGE: 5 KG - 6 KG  
 CHARGE DEPTH: 33 M - 37 M

EMITTER-RECEIVER CONFIGURATION:  
 NW ..... SE

1 ..... 30 SP 31 ..... 60  
 [-----] K [-----]  
 [-----] 15 M [-----] 15 M [-----] 15 M [-----]

17 STATIONARY FREQUENCY FILTER  

MSEC	LOW-CUT	HIGH-CUT
HZ	HZ	HZ
DB/OCT	DB/OCT	DB/OCT
0 - 3000	12 24	80 48

18 SCALING (DISPLAY LEVEL)  
 DISPLAY  
 SCALE: 1: 6250, 1 SEC @ 20 CM  
 TRACE SPACING: 2.4 MM  
 POLARITY: POSITIVE NUMBERS @ BLACK

REMARKS:  
 CLIENT REPRESENTATIVE: MR. R. RAPELLA  
 EMPLOYED BY AGIP - ELSI - SEISMIC DEVELOPMENT  
 HNL DATA PROCESSING DEPARTMENT - S. DONATO M. SE. - ITALY

- INPUT TAPE FORMAT: SEG - 1, 3 TRACES, 15000 BPI
- GAIN REMOVAL
- HANDLING FILTER: HIGH-CUT 90 HZ 24 DB/OCT
- RESAMPLING: SAMPLING RATE 4 MSEC
- STATIC CORRECTIONS (CALCULATED BY THE FIELD PARTY):  
 CORRECTION VELOCITY: 2000 M/SEC, DATUM PLANE: 400 M  
 RECALCULATED FOR INTERMEDIATE TIME LEVEL CORRECTION
- CORRECTION OF SPHERICAL DIVERGENCE
- MINI-PHASE TRANSFORMATION OF RECORDER AND GEOPHONE RESPONSE
- STATIONARY FREQUENCY FILTER  

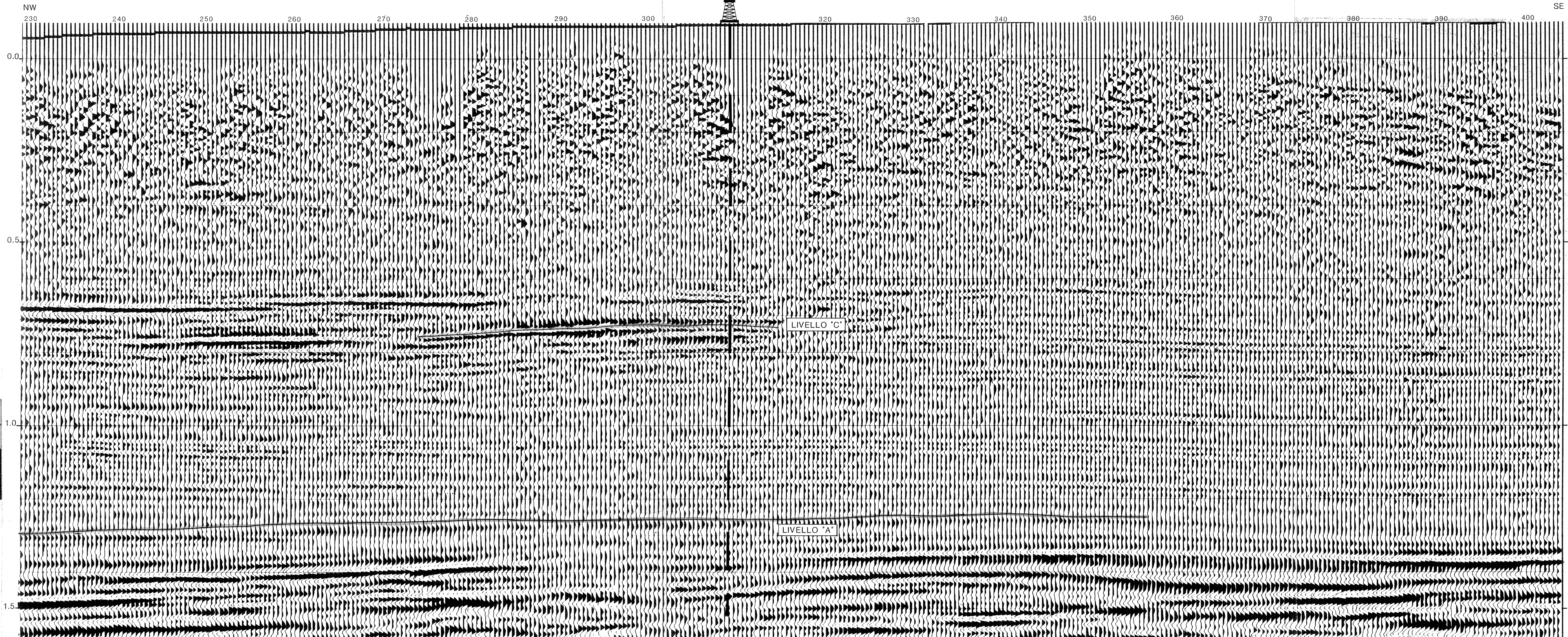
MSEC	LOW-CUT	HIGH-CUT
HZ	HZ	HZ
DB/OCT	DB/OCT	DB/OCT
0 - 3000	8 48	50 36
- DECONVOLUTION: TYPE PREDICTIVE, PREWHITENING FACTOR 1X  
 TIMEVARIANT: 2 GATES, OPERATOR LENGTH: 120 MSEC  
 100% TIME  

SHOTNEAR	SHOTNEAR	SHOTNEAR	SHOTNEAR	PRED. INTERVAL
MSEC	MSEC	MSEC	MSEC	MSEC
500-2300	1100-3100	1300	2200	0
2300-4300	3100-4300	3000	3300	
- DYNAMIC CORRECTIONS DERIVED FROM VELOCITY ANALYSES (CDP GATHER)
- AUTOMATIC STATIC CORRECTIONS  
 GATE: 500 MSEC - 2500 MSEC
- NORMALIZATION USING AVERAGE VALUES  

LENGTH	CENTRE
MSEC	MSEC
3000	1500
- HORIZONTAL STACKING: 10 FOLD
- BLOCK CORRECTION: 600 MSEC
- CORRECTION FROM INTERMEDIATE TIME LEVEL TO DATUM PLANE 400 M, CORRECTION VELOCITY: 2000-2100 M/SEC
- ZERO-PHASE TRANSFORMATION
- STATIONARY FREQUENCY FILTER  

MSEC	LOW-CUT	HIGH-CUT
HZ	HZ	HZ
DB/OCT	DB/OCT	DB/OCT
0 - 3000	12 24	80 48
- SCALING (DISPLAY LEVEL)
- DISPLAY  
 SCALE: 1: 6250, 1 SEC @ 20 CM  
 TRACE SPACING: 2.4 MM  
 POLARITY: POSITIVE NUMBERS @ BLACK

SORI	dis.n. 546B/2	data APRILE 1987	S. 1:6250	allegato 4
	ACERENZA REPROCESSING 1985 LINE PZ-439-81 (SP 115-403) RAP 10 FOLD			855 304



REMARKS:  
 CLIENT REPRESENTATIVE: MR. R. RAPELLA  
 EMPLOYED BY AGIP - ELSI - SEISMIC DEVELOPMENT  
 HNL DATA PROCESSING DEPARTMENT - S. DONATO M. SE. - ITALY