

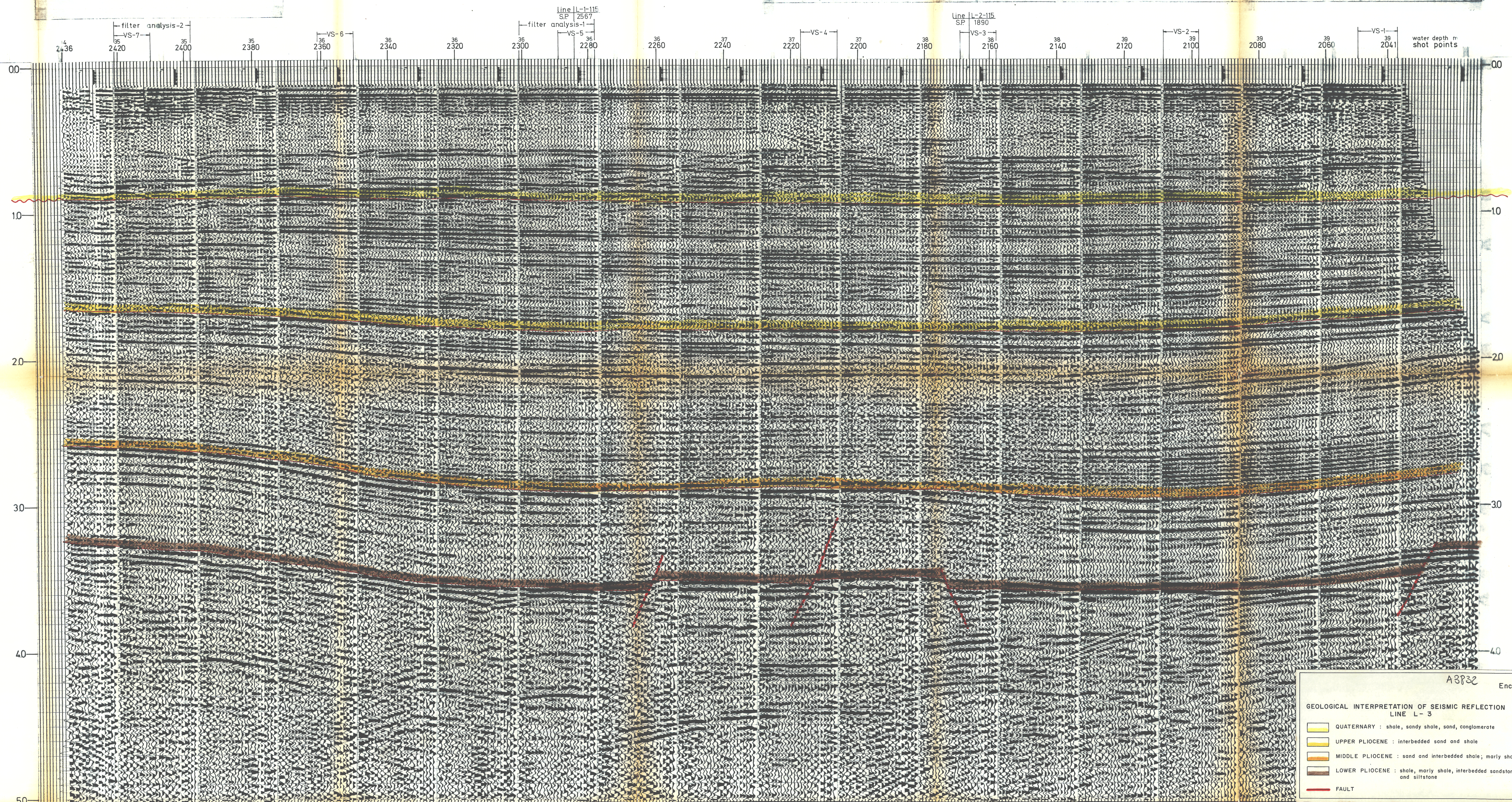
ADRIATIC SEA

LINE: L-3-115

July 1973 SHOT POINTS: 2041 - 2436



SHOOTING PARAMETERS	RECORDING PARAMETERS	SEIS EDIT & NMO	DECONVOLUTION	24-FOLD STACK	DIGITAL BAND PASS FILTERING	DISPLAY
24-fold off end Shot by GEOFIZIKA Cable length 1610 m Group interval 70 m Shot point interval 35 m Shot offset 305 m Charge flexotir Average seis. depth 12 m	System 10000/200 Record length 5.0 sec Sample 4 ms AGC: trip 0.6 rate 80 init 60 final 120 Filters: hi 70/24 lo 12/24	TAR B= 0.0 db $\alpha = 4.5$ db/sec from 0.6 sec to 3.3 sec Water velocity 1500 m/sec	TVD Filter length 108 ms Gate length 1800 ms N° gates/trace 3 Trace Initial Final 1 600 4200 2 1368 4968	Depth point stack RNMO First break suppression T ₁ 100 T ₂ 1250 T ₃ 300 T ₄ 1380 T ₅ 500 T ₆ 1500 T ₇ 700 T ₈ 1620 T ₉ 900 T ₁₀ 1740 T ₁₁ 1100 T ₁₂ 1820	frequency 0 20 40 60 time 0 10 20 30 40 50	Analog filters OUT-OUT Straight gain: +12(0)-4 Tape HIZ: 808



A8P32 Encl. XI

GEOLOGICAL INTERPRETATION OF SEISMIC REFLECTION
LINE L-3

- QUATERNARY : shale, sandy shale, sand, conglomerate
- UPPER PLIOCENE : interbedded sand and shale
- MIDDLE PLIOCENE : sand and interbedded shale; marly shale
- LOWER PLIOCENE : shale, marly shale, interbedded sandstone and siltstone
- FAULT