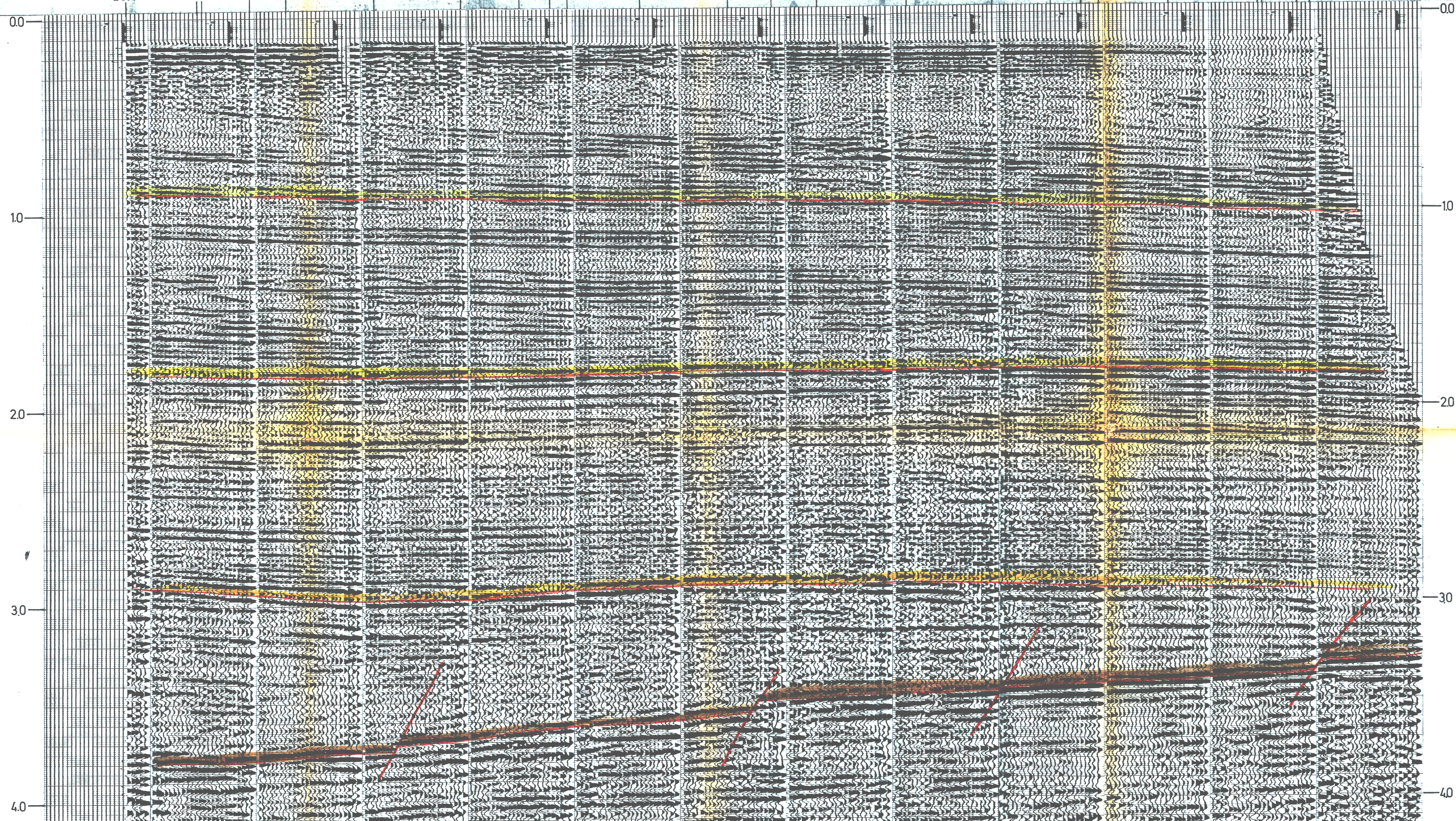


SHOOTING PARAMETERS	RECORDING PARAMETERS	SEIS. EDIT & NMO	DECONVOLUTION	24-FOLD STACK	DIGITAL BAND PASS FILTERING	DISPLAY
24-fold off end Shot by GEOFIZIKA Cable length 1510 m Group interval 70 m Shot point interval 35 m Shot offset 305 m Charge flexotir Average seis. depth 12 m	System 10000/200 Record length 5.0 sec Sample 4 ms AGC: trip 0.6 rate 80 init 60 final 120 Filters: hi 70/24 lo 12/24	TAR B= 0.0 db α= 4.5db/sec from 0.6sec to 3.3 sec Water velocity 1500 m/sec	TVD Filter length 164 ms Gate length 1800 ms N° gates/trace 3 Times Initial Final 1 600 4200 24 1356 4956	Depth point stack RNMO First break suppression T1 100 T1a 1260 T2 300 T2a 1380 T3 500 T3a 1500 T4 700 T4a 1620 T5 900 T5a 1740 T6 1100 T6a 1920	frequency Hz time	Analog filters OUT-OUT Straight gain: +12(0)-4 Tape HTZ- 808

SW ← → NE

18 2036    19 2020 VS-4    20 2000    22 1980    24 1960    VS-3    26 1940    31 1920    36 1900    line L-3-115 S.P. 2166    40 1880    45 1860    50 1840    VS-2    54 1820    56 1800    VS-1    60 1780 60 1771 water depth m shot point



A3831 Encl. X

GEOLOGICAL INTERPRETATION OF SEISMIC REFLECTION LINE L-2

- QUATERNARY : shale, sandy shale, sand, conglomerate
- UPPER PLIOCENE : interbedded sand and shale
- MIDDLE PLIOCENE : sand and interbedded shale; marly shale
- LOWER PLIOCENE : shale, marly shale, interbedded sandstone and siltstone
- FAULT