

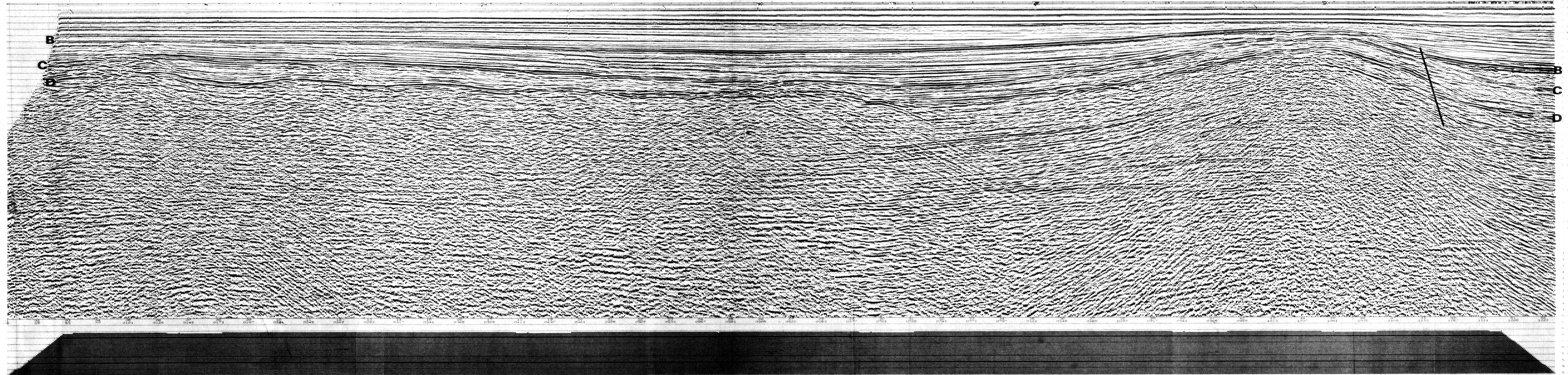
ZONE ANOMALIQUE
AU-DESSOUS DE L'HORIZON C

LIGNE 06

S. - W.

1 KILOMETRE

3708
N. - E.



SEFEL J. & ASSOCIATES
DATA PROCESSING CONSULTANTS
(LONDON)

CLIENT: CPI
 PROJECT: PERMIT BR 109
 TVF STACK
 SEA LEVEL DATUM
 SP 1 TO SP 1190
 LINE BR- 109-06 NE DIRECTION

RECORDED BY GEOPHYSICAL OFFSHORE EXPLORATION
 VESSEL: R/V GEL TIDE
 RECORDING DATE: 27 APRIL 1978
 INSTRUMENTS: LRS-600 CBB-1 SEC-C FORWARD
 RECORD LENGTH: 6.0 SECONDS
 SAMPLE INTERVAL: 2 MSEC
 RECORDING FILTER: 6/124 HZ
 SOURCE: 16 GUN CLUMS
 TOTAL GUN CAPACITY: 2450 CU. IN
 OPERATING PRESSURE: 2000 PSI
 GUN DEPTH: 7.6 METRES
 CABLE: 40 GROUPS - 52 HYDRAPHONES/GROUP
 CABLE DEPTH: 12.2 METRES
 CENTRE OF GUNS TO CENTRE OF NEAR GROUP: 250 FT
 GROUP INTERVAL: 50 METRES
 SHOT INTERVAL: 25 METRES
 RECORDING FID: 1000 PERCENT
 PRIMARY NAVIGATION: TRANSponder
 SECONDARY NAVIGATION: SAT NAV

- PROCESSING SEQUENCE:
1. DEMULTIPLEX AND BINARY GAIN RECOVERY
INCLUDES RESAMPLING TO 1 MSEC
 2. SYNTHETIC GAIN CURVE APPLICATION
G(D) = 41 + 30 LOG(D/1) + 20
 3. COP TRACES GATHER TO 1000 PERCENT
3.0 SECOND DATA LENGTH
INCLUDES NEAR TRACE DISPLAY
INCLUDES EDITING
 4. FILTER
5/60 HZ BANDPASS - 520 MSEC 8.L.
200 MSEC OPERATOR LENGTH
 5. DECONVOLUTION - ALL LEAD SOURCES
24 MSEC PREDICTION TIME
WINDOW: 200 MS TO 3000 MS
SLOPE OF 1800 MS ACROSS 40 TRACES
 6. VELOCITY ANALYSES
CONSTANT VELOCITY STACKS
 7. NMO REMOVAL
 8. FIRST BREAK MUTE
0-150, 400-570, 1000-1520
2200-2570
 9. STACK TO 1000 PERCENT
BULK STATIC - DATUM CORRECTION: 4m
TIME VARIANT FILTER
 10. TIME VARIANT EQUALIZATION
HORIZED WITH STRUCTURE
 11. FILM DISPLAY
5 CM/SEC VERTICAL SCALE
4 CM - 1 CM HORIZONTAL SCALE

GEOPHYSICAL DATE: JUNE 1978