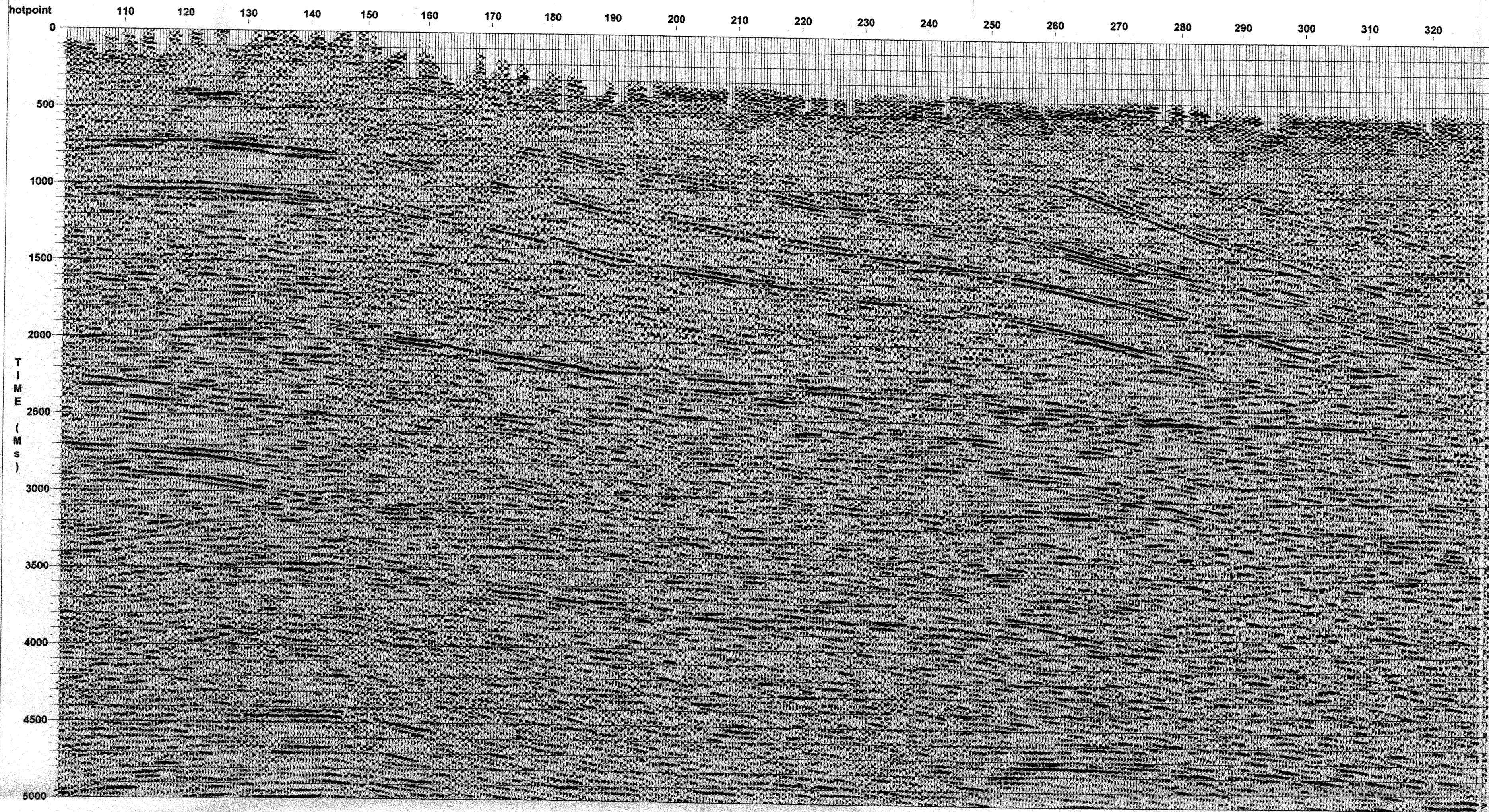


3 GEOTERMIA DI ROMA
- 6 OTT. 2000
3548

TET 85-06
SP 157



FOREST - CMI Spa

Line : TET-85-02
Shotpoints : 98 - 326
Area : PIETRACAMELA
Location : ITALY
Process : STACK

E
→

FIELD INFORMATION

RECORDED BY : WESTERN GEOPHYSICAL DATE : AUG 1986

ENERGY SOURCE
type : DYNAMITE
sweep frequency :
shot point interval : 50 m
source depth : 30 m
size :

RECEIVING ARRANGEMENT
receiver type :
receiver array :
receiver interval : 25 m
spread : 1275-125-125-1275

INSTRUMENTATION
recording system : DSS 88
number of channels : 48
sample rate : 2 ms
record length : 7 seconds

PROCESSING SEQUENCE

PROCESSING SYSTEM : SEISMIC IMAGE SOFTWARE LTD. DATE : MAY 2000

FOLD : 12 00%

DATUM : 1000 m

DEMULPLEX : SEG-Y

AMPLITUDE RECOVERY

AGC : 500

DECONVOLUTION
deconvolution type : spiking
operator length : 128 ms

FILTER : 8 - 55 Hz

VELOCITY ANALYSIS / RESIDUAL STATICS : multiple iterations

NMO

MUTE

CDP STACK

FX DECON

MEAN SCALING : 7000 ms.

FILTER : 8 - 55 Hz

DISPLAY

TRACE INTERVAL : 25 m
DISPLAY POLARITY : normal
HORIZONTAL SCALE : 24 traces/inch
VERTICAL SCALE : 2.0 inches/second

gpc Transylvania Inc.
Geophysical Corporation

2 Memorial City Plaza Houston, TX 77024 820 Gessner, Suite 1455 Phone (713) 722-8010