

SHOT
 March 1970
 PROCESSED
 May 1970

SHOOTING PARAMETERS
 24-Fold, Off-End Air Gun
 Shot by S.S.I. Party 908
 Cable Length 600 m
 Group Interval 66.6 m
 Shot Point Interval 33.3 m
 Average Shot Offset 232 m
 Total Gun Size 900 cuins
 Average Sigs Depth 2 m

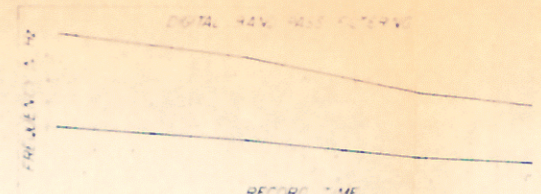
RECORDING PARAMETERS
 System OFS III Binary Set
 Record Length 5.0 secs Sample 4 msec
 Gain Expansion rate 1500 db/sec
 Release Rate 94 db/sec
 Initial gain 42 db Final Gain 90 db
 Gain constant 30 db Trip delay 280 sec
 Filters H: 62 Hz 72 db/oct
 L: 4 Hz 42 dB 18 dB/oct
 4 ms Ant -4 db Filtering

SEIS EDIT & NMO
 TAR Applied
 4.0 db/sec 0.5-4.0 sec
 Equalization 15 - 4.0 sec
 Water Velocity 1524 m/sec
 Replacement vel 1524 m/sec

24-FOLD STACK
 First Break Suppression
 2-Fold: 0.50 secs 4-Fold: 1.22 secs
 4-Fold: 0.76 secs 8-Fold: 1.44 secs
 8-Fold: 0.81 secs 16-Fold: 1.64 secs
 16-Fold: 0.88 secs 24-Fold: 1.75 secs
 10-Fold: 0.99 secs 22-Fold: 1.78 secs
 12-Fold: 1.05 secs 24-Fold: 1.81 secs
 Equalization 0.5-4.0 secs

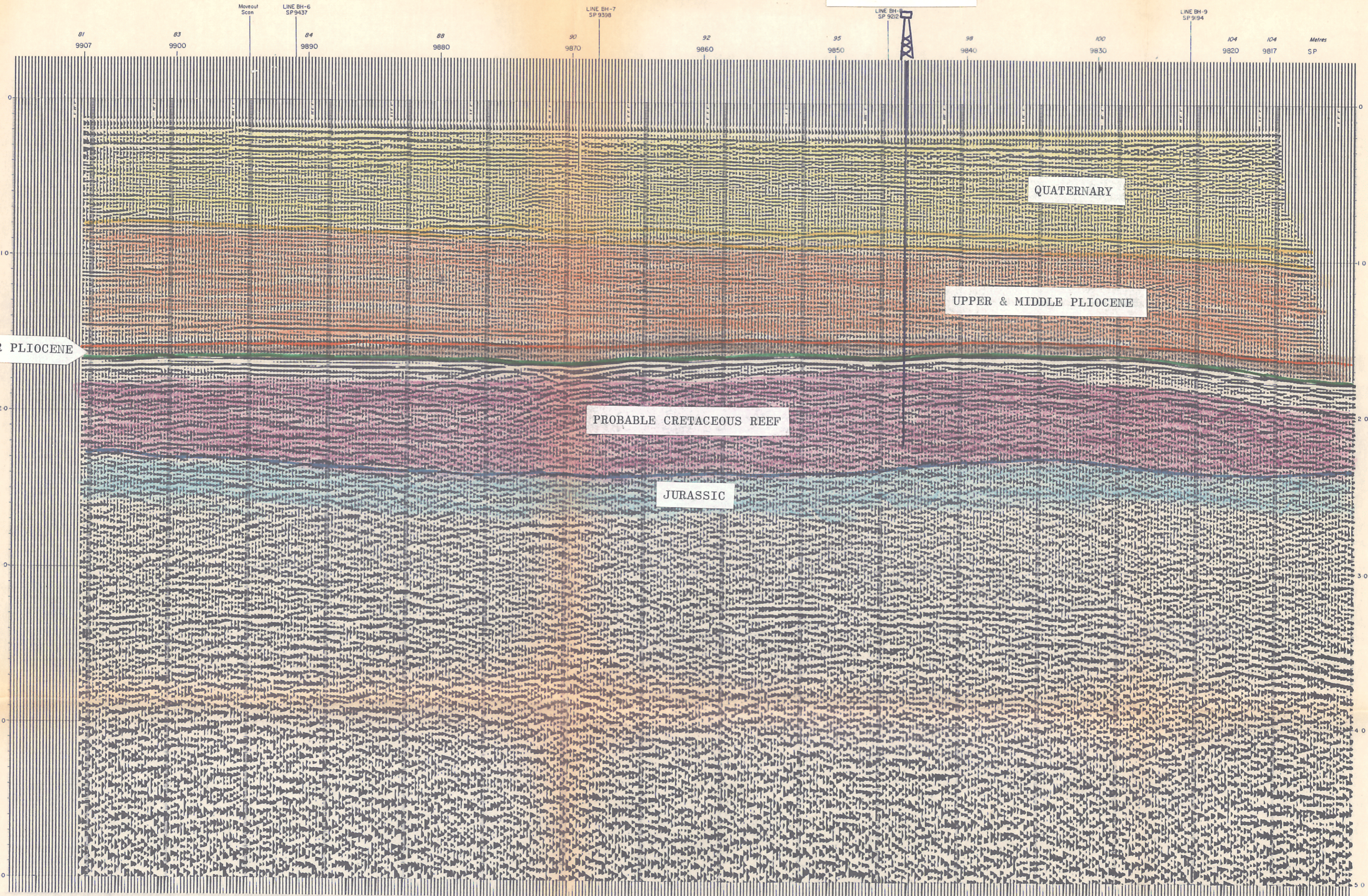
DECONVOLUTION
 Time Variant
 Filter Length 228 msec
 Gate Length 2666 msec
 No. of Gates / Trace 2
 Ring Times, Gate No 1
 Tr: 0.5 sec Tr: 24.05 sec
 Ring Times, Gate No 2
 Tr: 4.5 sec Tr: 24.45 sec

T.V. EQUALIZATION
 6 Equalization Gates
 Gate 1: 0.25-1.04 secs
 Gate 6: 4.21-5.00 secs
 Sigsers applied in a
 time varying manner



DISPLAY
 x 24 Fold Coverage
 Analog Filters OUT-OUT
 Request No L-6149
 Tape HTL S-4-12
 Section No 9 III

PROPOSED LOCATION



LOWER PLIOCENE

QUATERNARY

UPPER & MIDDLE PLIOCENE

PROBABLE CRETACEOUS REEF

JURASSIC