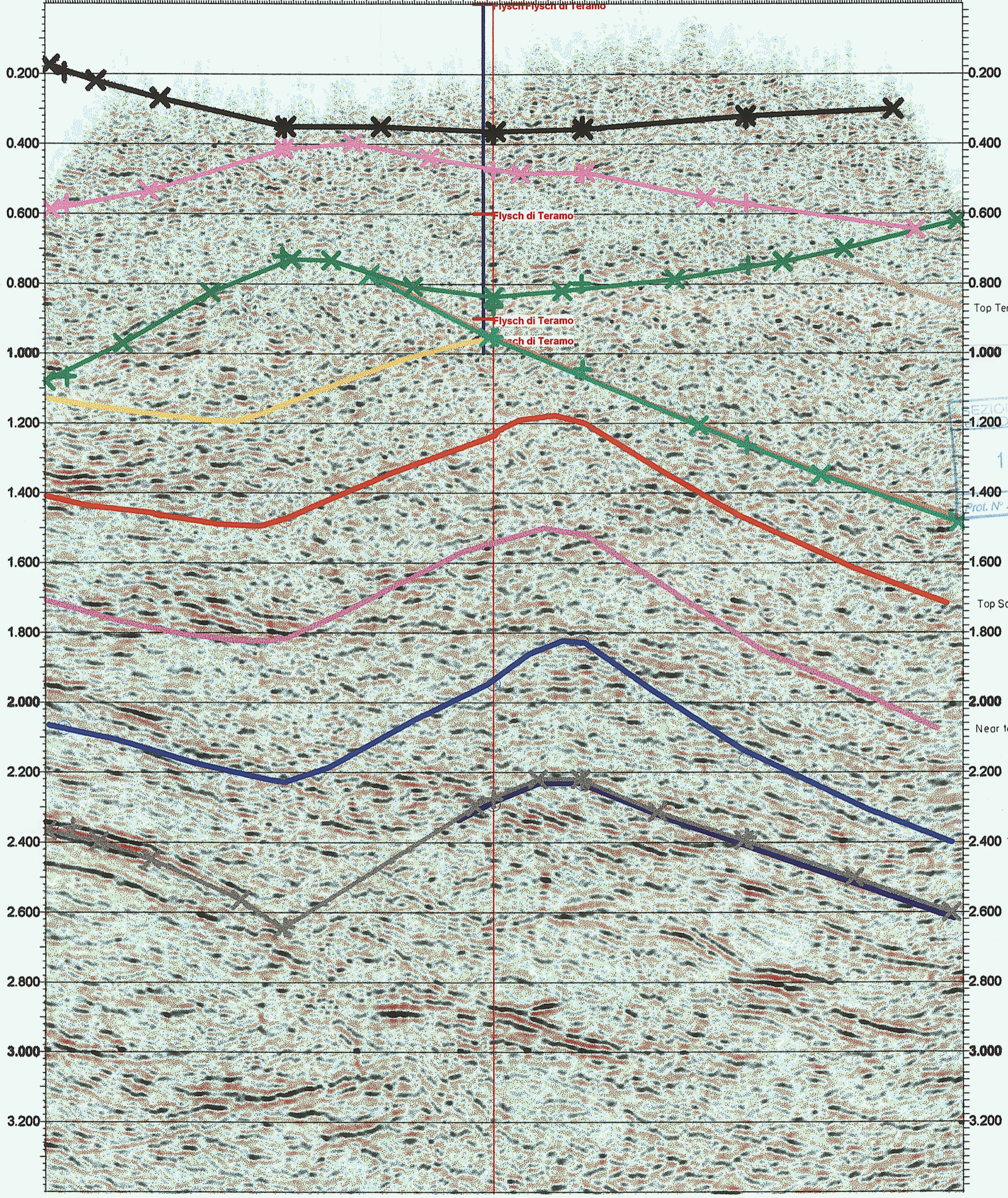



Bisenti 2 2 Bisenti 1 1 CermCermignano 1 1
 TET-85-03, 498.53 TEF-49-86, 560.98 CE-06, 204.6 TEF-48-86, 495.44
 SP: 260.0 240.0 220.0 200.0 180.0 160.0 140.0 120.0 100.0
 - CE-13-81 -



	Forest Oil International
Project: Pietracoumali	
Line CE-13-81, Migration	