

A3621

BLUE STAR
 AREA ADRIATIC
 LINE BBS-1 (TVF)
 SHOT March 1970
 PROCESSED May 1970
 GEOPHYSICAL SERVICE INTERNATIONAL LTD

SHOOTING PARAMETERS
 Shot Length 5 sec Sample 4 msec
 Gain Expansion rate 500 db/sec
 Release Rate 30 db/sec
 Shot Interval 66.6 m
 Shot Point Interval 232 m
 Average Shot Offset 232 m
 Total Gun Size 900 cuins
 Average Shot Offset

RECORDING PARAMETERS
 System 12-12 Binary Ge
 Shot Length 5 sec Sample 4 msec
 Gain Expansion rate 500 db/sec
 Release Rate 30 db/sec
 Shot Interval 66.6 m
 Shot Point Interval 232 m
 Average Shot Offset 232 m
 Total Gun Size 900 cuins
 Average Shot Offset

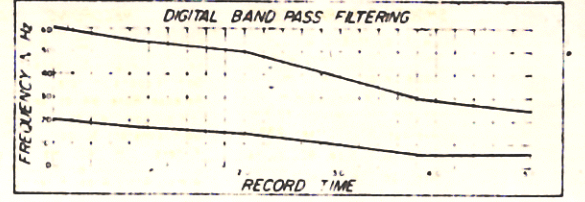
VERTICAL STACK
 TAR Applied
 CX 4.0 db/sec OO-4.0sec
 Two-Fold Vertical Stack

SEIS EDIT & NMU
 Static and Dynamic Correction
 Equalization 8.5.0 sec
 Water Velocity 1524 m/sec
 Replacement Vel 1.4 m/sec

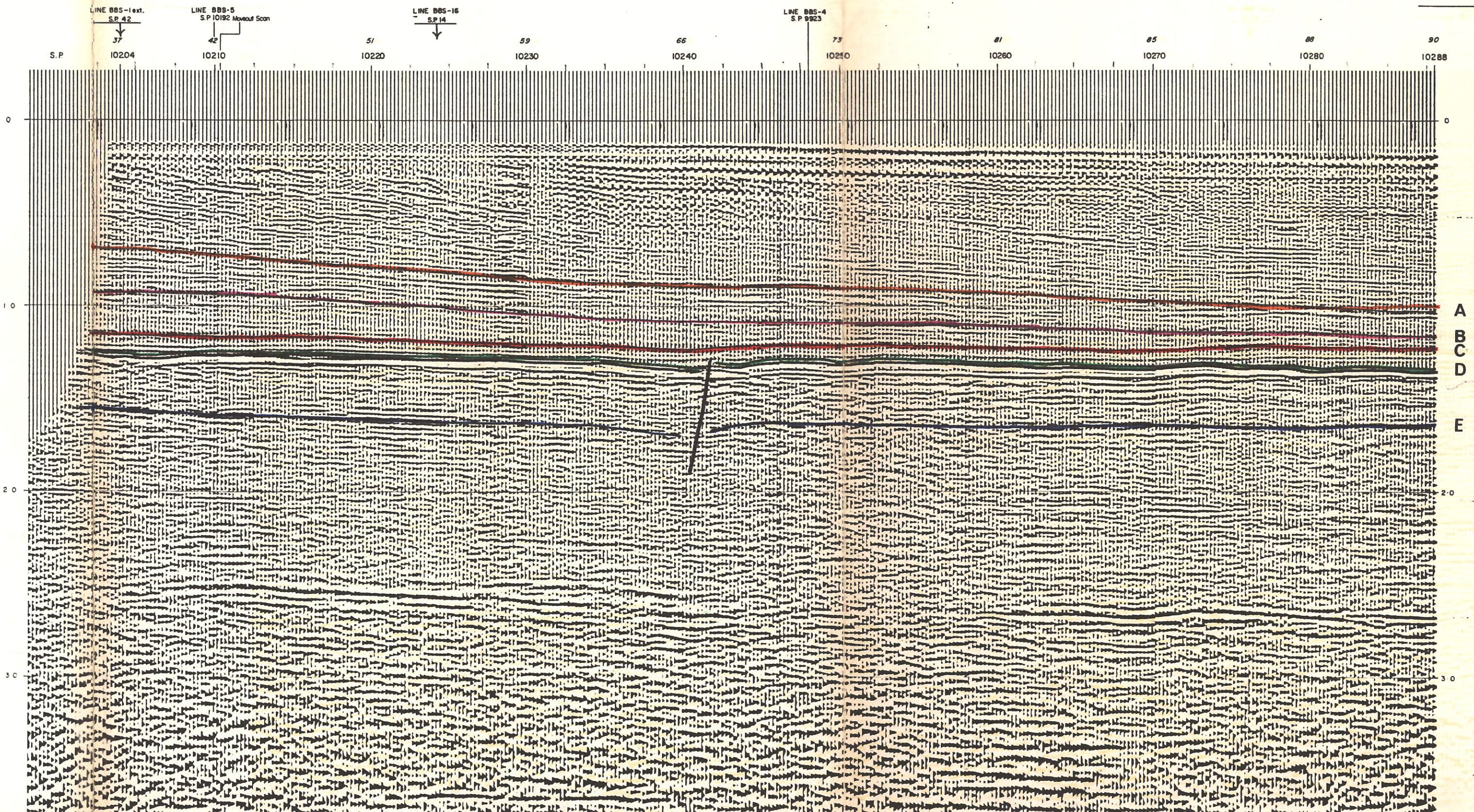
12-FOLD STACK
 Break Suppression
 1-Fold 0.10 sec 7-Fold 1.54 sec
 2-Fold 0.70 sec 8-Fold 1.60 sec
 3-Fold 0.90 sec 9-Fold 1.65 sec
 4-Fold 1.15 sec 10-Fold 1.70 sec
 5-Fold 1.30 sec 11-Fold 1.75 sec
 6-Fold 1.42 sec 12-Fold 1.80 sec
 Equalization 8.5.0 sec

REC SELECTION
 Filter Length 228 msec
 Gate Length 2667 msec
 No of Gates 2
 Initial Times Gate No. 1
 Tr 1.05 sec Gate No. 2
 Tr 1.45 sec Gate No. 2
 Tr 1.45 sec Gate No. 2

TV NORMALIZATION
 Normalization Gates
 Gate 1 0.25-1.04 secs
 Gate 6 4.2-5.0 secs
 Scalers applied in a Time-Varying manner



DISPLAY
 2x12 Fold Coverage
 Analog Filters DU-OUT
 Request No L-6972
 Tape HTL 1-1-3
 Section No B-5 III



A
B
C
D
E