

NORTHEAST

MINERARIA TEXAS ITALIANA
AREA BR-109 (ADRIATIC SEA) LINE NO. 24

SP's 1-261

PROCESSING

EXPONENTIAL GAIN RATE 4db/Sec. GATE 0-3.0 Sec. VELOCITY ANALYSIS
 VERTICAL STACK TWO ON ONE RESIDUAL NORMAL MOVEOUT
 NORMAL MOVEOUT COMMON DEPTH POINT GATHER
 TV DECON MULTICHANNEL DECON COMMON DEPTH POINT SUM 24 FOLD
SP 1-262 NO FILTERS 1 WHITE NOISE 1% DIGITAL FILTER NO FILTERS 3
FILTER LENGTH 416 ms BAND PASS 15-45 cps TIME 0-500 sec
DESIGN GATES NEAR OFFSET 200-4.500 Sec. 10-40 cps 100 sec
10-25 cps 200 sec

DESIGN GATES FAR OFFSET 200-4.500 Sec. TRACE AMPLITUDE EQUALIZATION
 SINGLEFOLD DISPLAY
 VELOCITY ANALYSIS

SP NO FILTERS WHITE NOISE
FILTER LENGTH ms
DESIGN GATES NEAR OFFSET
DESIGN GATES FAR OFFSET

FIELD DATA

RECORDING INST. TI 11,000, DFS III, 48 TRACE
RECORDING FILTERS 8-62 cps
SPREAD CONFIGURATION - END ON 595'-8293' OFFSET
GAIN INFORMATION - BINARY GAIN
ARRAY - 19 GUNS

2-80 IN³ (2-40) 6-20 IN³
6-40 IN³ 5-10 IN³

RECORDED AND PROCESSED BY



MTI
LINE 24
SPI-261
24 FOLD CDPSUM

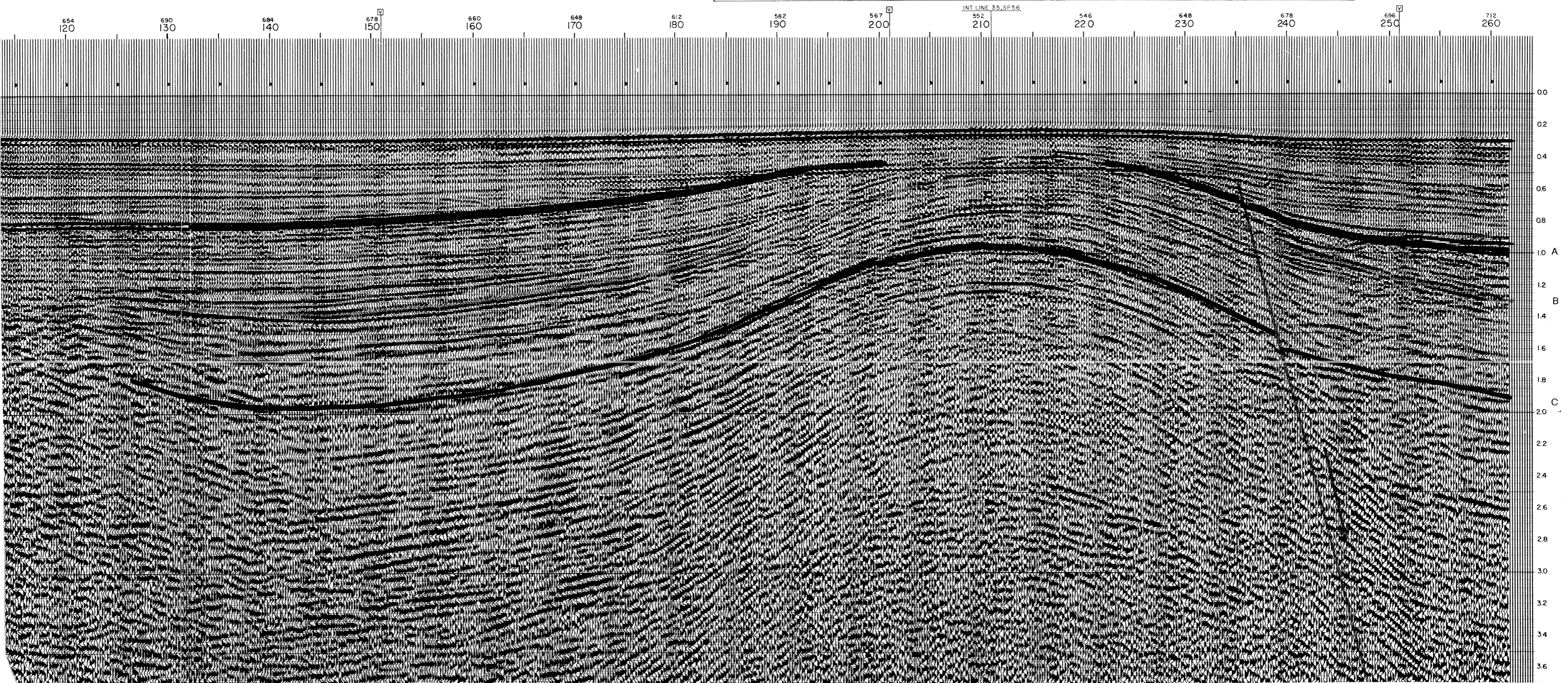


Plate 3