

Acc. 3

BP-METRA-SAROM

AGIP DIREZIONE MINERARIA		AREA: ADRIATIC SEA		PROSPECT: ZONE "B"		WESTERN GEOPHYSICAL	
RECORDING DATA		PROCESSING INFORMATION		PROCESSING SEQUENCE		LEGEND	
PARTY No. 62 ENERGY SOURCE AQUAPULSE FILTER OUT-OUT CABLE 48 GROUPS - 2400 m.l. GEOPHONES 20 CRYSTAL ELEMENT EVENLY SPACED 1,52 m.l. APART LEAD IN 218 m.l. AMPLIFIER S.D.S. BINARY GAIN CHARGE SIZE 4 GUN POPS GUN DEPTH 9.15 m.l. AVG. CABLE DEPTH 9.75 m.l. DATE SHOT MARCH, 1972		SAMPLE RATE 4 ms. DECON BEFORE STACK TIME VAR. MIN. PHASE INVERSE FILTER AUTO CORR. INT.: 2 ZONES SEARCH ZONE: 1st SAMPLE TO 200ms OPERATOR LENGTH: SEARCH ZONE TIME ZONE: 0 - 5.0 SEC. ITERATIONS: 1		1) EDIT (SUM 1 POP) 2) DECONVOLUTION BEFORE STK. 3) 4800 % STK 4) TV FILTER 5) PLAYBACK VELOCITIES INTERPOLATED BETWEEN POINTS OF APPLICATION CORRECTION TO SEA LEVEL = 0 REEL No. 84745 DATE MARCH, 1972		LINE S.P. FUNCTION No. VELOCITY APPLIED: VELOCITY ANALYSIS: SHOT POINT No.: 100 WATER DEPTH IN METRES: 10	
		TIME VARIANT FILTER					
		L.C. H.C. TIME ZONE Hz dB/OCT Hz dB/OCT 0000-1200 12 12 45 48 1200-3000 10 6 40 49 3000-5200 8 6 35 48					

LINE BR-431W

S.P. 06 to S.P. 85^D

DATUM PLANE: SEA LEVEL

M-ITAD 4085

M-ITAD 4085

M-ITAD 4084

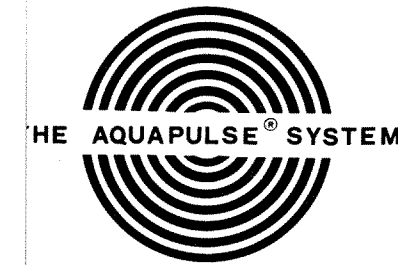
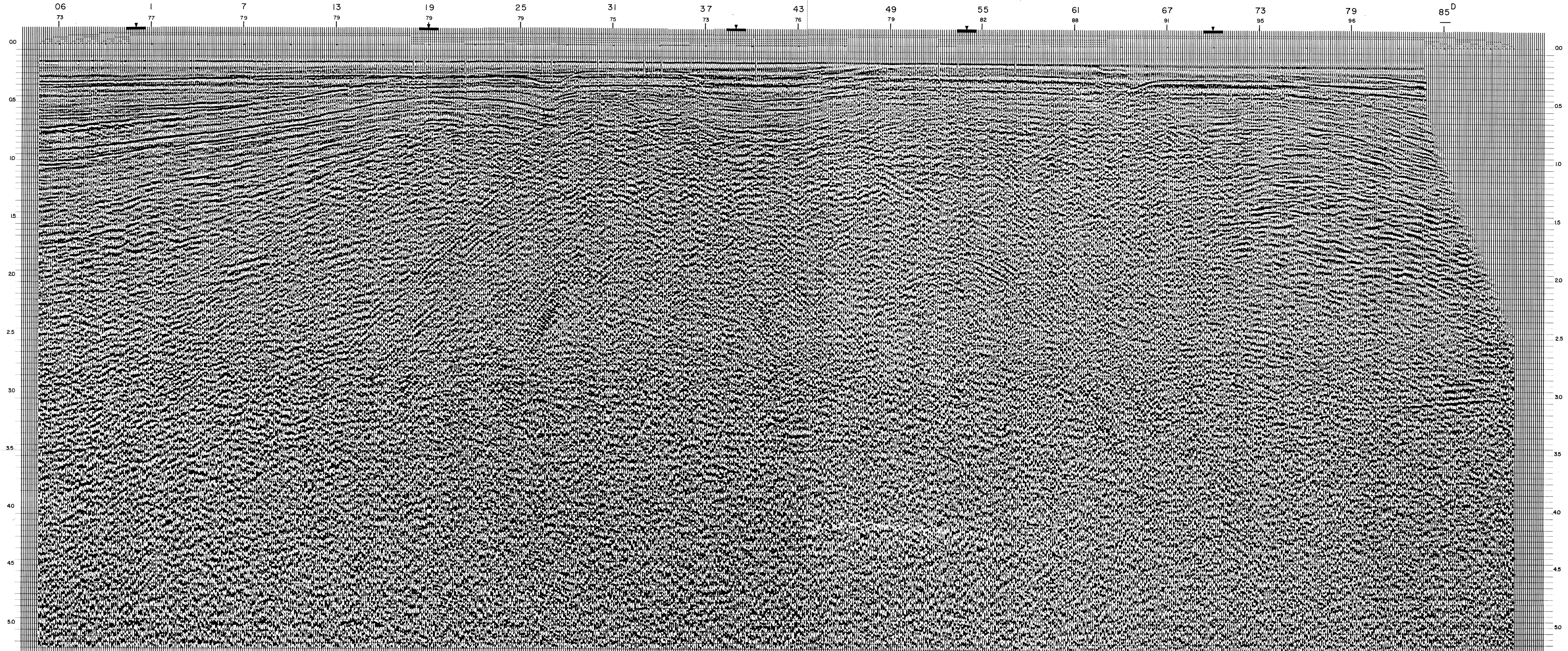
M-ITAD 4085

M-ITAD 4082

M-ITAD 4081

M-ITAD 4081

SOUTH WEST



LINE BR-431W

S.P. 49 to S.P. 85^D

DATUM PLANE: SEA LEVEL

BP-METRA-SAROM

AGIP DIREZIONE MINERARIA		AREA: ADRIATIC SEA		PROSPECT: ZONE "B"		WESTERN GEOPHYSICAL	
RECORDING DATA		PROCESSING INFORMATION		PROCESSING SEQUENCE		LEGEND	
PARTY No. 62 ENERGY SOURCE AQUAPULSE FILTER OUT-OUT CABLE 48 GROUPS - 2400 m.l. GEOPHONES 20 CRYSTAL ELEMENT EVENLY SPACED 1,52 m.l. APART LEAD IN 218 m.l. AMPLIFIER S.D.S. BINARY GAIN CHARGE SIZE 4 GUN POPS GUN DEPTH 9.15 m.l. AVG. CABLE DEPTH 9.75 m.l. DATE SHOT MARCH, 1972		SAMPLE RATE 4 ms. DECON BEFORE STACK TIME VAR. MIN. PHASE INVERSE FILTER AUTO CORR. INT.: 2 ZONES SEARCH ZONE: 1st SAMPLE TO 200ms OPERATOR LENGTH: SEARCH ZONE TIME ZONE: 0 - 5.0 SEC. ITERATIONS: 1		1) EDIT (SUM 1 POP) 2) DECONVOLUTION BEFORE STK. 3) 4800 % STK 4) TV FILTER 5) PLAYBACK VELOCITIES INTERPOLATED BETWEEN POINTS OF APPLICATION CORRECTION TO SEA LEVEL = 0 REEL No. 84745 DATE MARCH, 1972		LINE S.P. FUNCTION No. VELOCITY APPLIED: VELOCITY ANALYSIS: SHOT POINT No.: 100 WATER DEPTH IN METRES: 10	
		TIME VARIANT FILTER					
		L.C. H.C. TIME ZONE Hz dB/OCT Hz dB/OCT 0000-1200 12 12 45 48 1200-3000 10 6 40 49 3000-5200 8 6 35 48					

LINE BR-431W

S.P. 49 to S.P. 85^D

DATUM PLANE: SEA LEVEL

M-ITAD 4081

M-ITAD 4081

SOUTH WEST