

127.11.77

AGIP

OFFSHORE ITALY  
SICILY CHANNEL

S  
380

LINE CL74.19N 100

N  
100

COMPAGNIE GENERALE  
DE GEOPHYSIQUE  
& Rue Galvani - 91301 MASSY FRANCE

DIGITAL PROCESSING P5

DP elevation 0

STACK 4800 %

Boat motion ←

58

Date: JAN. 14 . 75

Checked: *Dg*

PROCESSING

- 1 AMPLITUDE RECOVERY
- 2 VAPCO (Division by vaporchoc signature)
- 3 MUTES
- 4 DECONVOLUTION 160 ms  
windows 100-1200ms  
1200-2400ms
- 5 VELOCITY ANALYSIS (VA)
- 6 NMO CORRECTIONS  
(LINEAR INTERPOLATION  
BETWEEN VELOCITY FUNCTIONS)

- 7 STACK 4800%
- 8 TIME VARIANT FILTER
- 9 TRACE EQUALIZATION
- 10 ANALOG DISPLAY

FIELD RECORDING

Ship: DAUPHIN DE CHERBOURG  
 Field recorder: SN 328 No 17 filter: 1/8-80  
 binary gain - sampling: 4 ms  
 Streamer: 2400 m (Depth: 20 m )  
 groups: 48 (group interval: 50 m)  
 Geophones type: HC 201 n°: 48 / group  
 48 Fold coverage  
 Energy source: VAPORCHOC  
 SP tr 1 Streamer tr 48  
 315 m

SEZIONE IDROCARBURI

J. NAPOLI

12 GIU. 1976

Prof. N. *Cl 20*

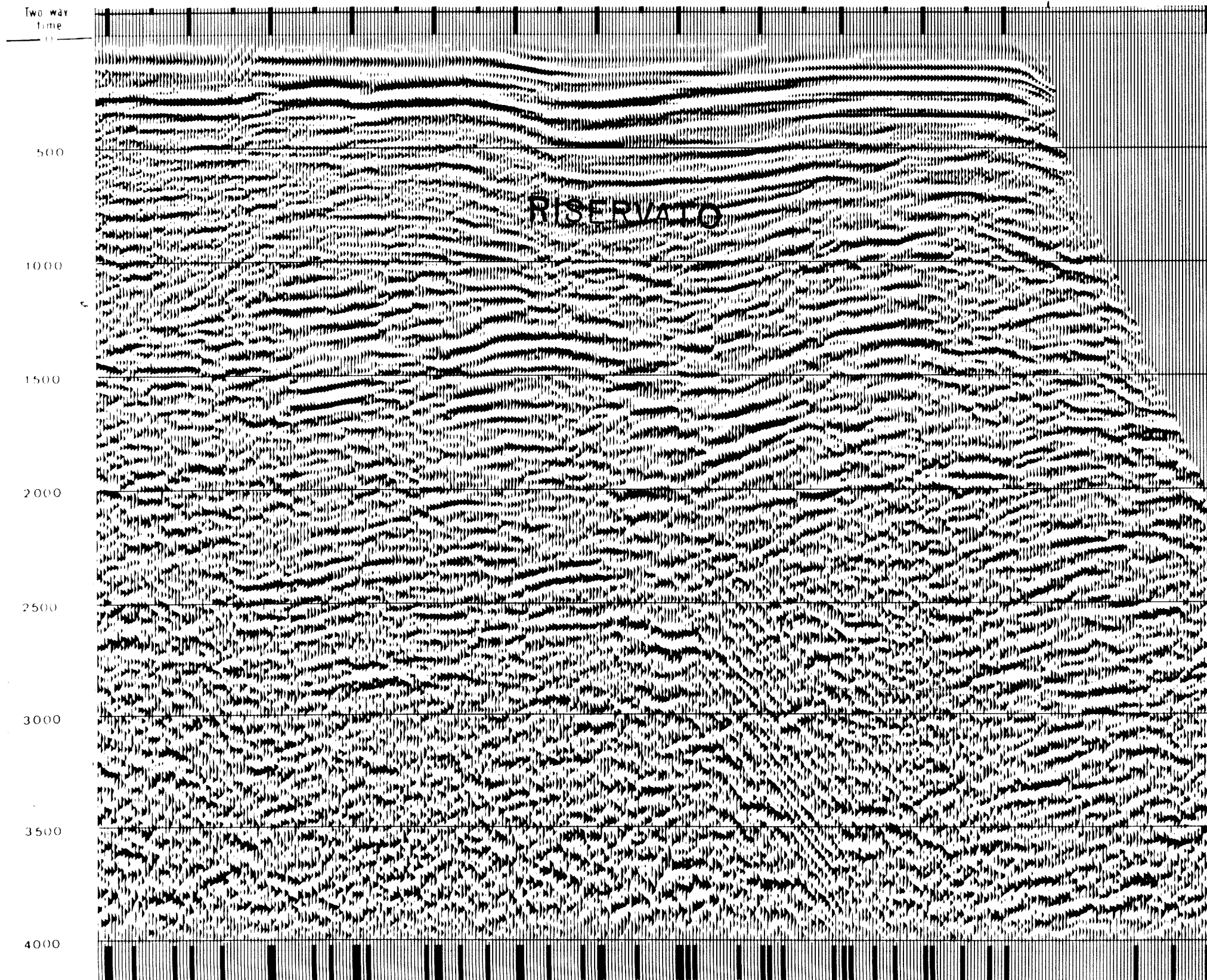
Sez.

Posiz.

Water depth in meters 66 69 72 72 78 100 99 102 87 87 88 96

VS VS

380 364 348 316 292 268 244 220 196 172 148 124 100



Two way time	*FROM SP*	*FROM SP*
	* 301*	* 100*
	* T0 SP *	* T0 Sp *
	* 380*	* 168*
	*****	
	* 2 WAY-T *	* AV. VEL. * AV. VEL. *
	IN MS	IN M/S IN M/S
	*****	
0	*	*
400	1929	1770
800	2354	2068
1200	3119	3124
1600	3999	4004
2000	4599	4603
2400	5000	5003
2800	5285	5288
3200	5500	5502
3600	5666	5668
4000	5799	5801

