



Dis.n.	Data	All.
2554/6	GENN '92	2

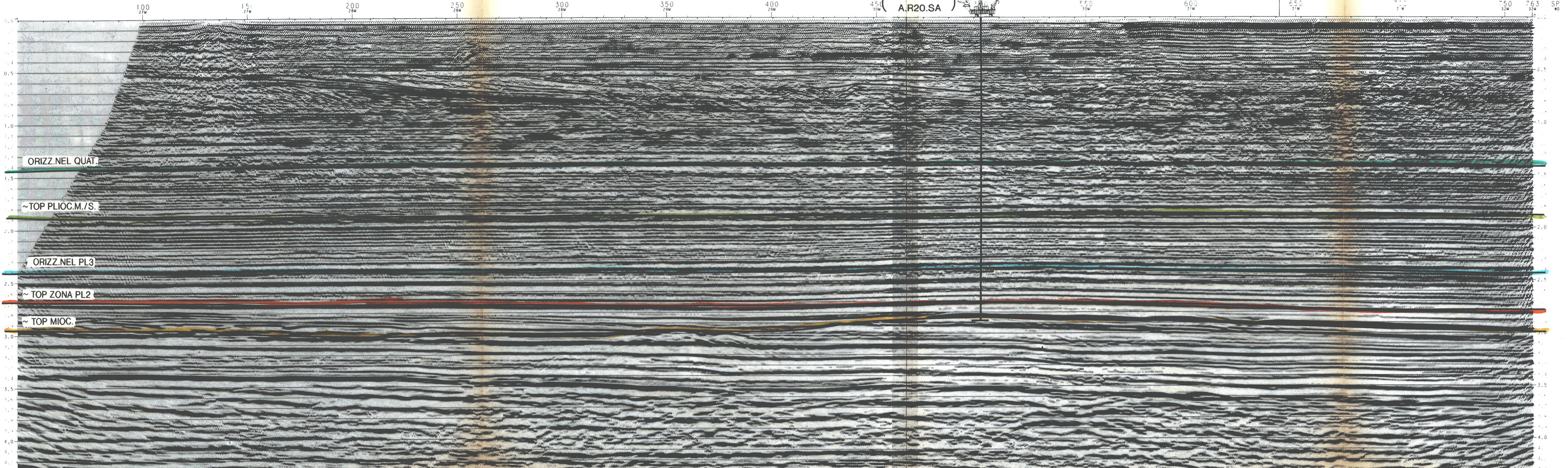
NW

SE

ZONA DI MAGGIOR INTERESSE MINERARIO

RITA 1
 (Proiett. da SW-850m)
 T.D.3600m

(04/02-10/3/71)
 A.R20.SA



S.O.R.I.

AREA: A.R76.A1

WESTERN GEOPHYSICAL
 DATE SHEET: OCTOBER 1991
 PROCESSED IN LONDON DIGITAL CENTRE MAY 1991

RECORDING DATA

DATE: 04/02-10/3/71
 PROJECT: A.R20.SA
 INSTRUMENTS: 2700 CH 100, 2700 CH 100
 ENERGY SOURCE: AIRGUNS
 PROCESSING SEQUENCE: PREPROCESSOR (D.B.S.), VELOCITY ANALYSIS, HORIZONTAL SCALES, LEGEND

LEGEND
 INTERSECT: [Symbol]
 WATER DEPTH: [Symbol]
 G.C.C. FOR W.G.C. James Dadd

COMMENTS
 DATA DISPLAYED ON A GEOPHYSICAL LASER PLOTTER AT DATE: 10/08/91
 DATA PLANE IS SEA LEVEL
 A LOW END CORRECTION OF 0.001 MS HAS BEEN APPLIED TO ALL RECORDS
 COMPRESSION FACTOR IS 0.001
 W.G.C. Dataset: 04/02-10/3/71

