

LINE A83-83R 48 FOLD S.P. 564 S.P. 904

TIME MIGRATION W-X DOMAIN
A 34 97

Agip
HYDROCARBON EXPLORATION
GEOPHYSICAL EXP. CENTRE

AREA OFFSHORE ITALY
PROSPECT A.R75.PX

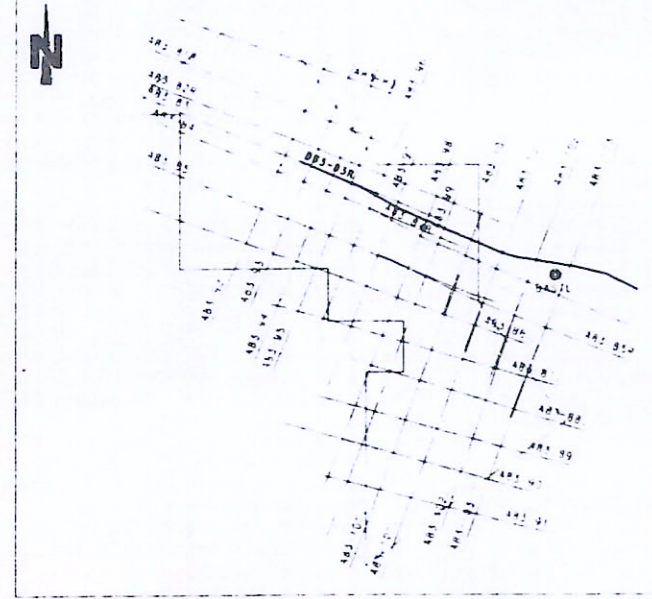
RECORDING	DATA	PLAYBACK	DATA
CONTRACTOR PARTY NO RECORDING INSTRUMENT SAMPLE RATE RECORD LENGTH FILTER L.C. ALIASING FILTER DATE	HORIZON EXPL. LTD. NORTHERN HORIZON DFS V 2 MS 8 SEC 12 HZ-18 DB/OCT 120 HZ-72 DB/OCT JULY, 1993	DATUM PLANE VERTICAL SCALE HORIZONTAL SCALE POLARITY CONVENTION PREPROCESSING REEL STACK REEL MIGRATION REEL PREVIOUS PROCESSING	SEA LEVEL 1 SEC- 5 CM. 1: 25000 SEISMIC 000004-000003 800110 608202
SPREAD CONFIGURATION TRACE / S.P.	153M-2520M 96		
GROUP / INTERVAL GEOPHONES / GROUP GEOPHONES / HZ	25 M. WATERGUN	1 -----2375 M-----153M	
ENERGY/SOURCE SHOT INTERVAL AVG CABLE DEPTH AVG. SOURCE DEPTH	25 M. 6 M. 4 M.		

PROCESSING

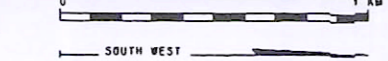
INPUT FORMAT: SEG-B GAP
9 TRAKS 1600 BPI

EDIT/DEMULTEPLEX F.L.L.
DESIGNATURE TO MINIMUM PHASE
USING FAR FIELD SIGNATURE
TIME RESAMPLING TO 4 MS.
PREPROCESSOR:
-SORTING TO CDP GATHER
-SOURCE AND STREAMER STATIC: +5MS
-GUN DELAY RECOVERY: -20 MS
-AMPLITUDE RECOVERY: GEOM. SPREADING
DECONVOLUTION: MIN. PHASE INV. FILTER
-WINDOW: 0.0-2.0SEC OP: 4-180MS WL: 1X
-WINDOW: 2.0-6.0SEC OP: 4-180MS WL: 1X
-TRACE BALANCE
D.M.O. CORRECTION
VELOCITY ANALYSES
-VEL. INCREMENT: 50 M/SEC
-VEL. RANGE: 1500-4000 M/SEC
-CORR. GATE: 0-3000MS 24 M/SEC
DYNAMIC CORRECTIONS
STACK 48 FOLD
D.A.S.: PREDICTIVE
-WINDOW: 0.0-2.0SEC OP: 40-200MS WL: 1X

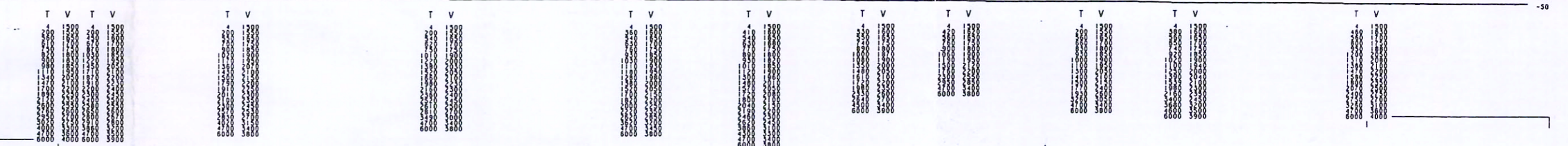
-WINDOW: 2.0-6.0SEC OP: 40-200MS WL: 1X
-TRACE BALANCE
MINIMUM TO ZERO PHASE CONVERSION
T.V. FILTER
TIME LC /SLOPE HC/SLOPE
0.0-2.5SEC 10HZ/24DB 75HZ/40DB
2.5-4.5SEC 12HZ/24DB 40HZ/40DB
TIME MIGRATION: W-X DOMAIN
-100% VSTACK
T.V. FILTER
TIME LC /SLOPE HC/SLOPE
0.0-0.8SEC 10HZ/24DB 70HZ/40DB
0.8-1.5SEC 10HZ/24DB 60HZ/40DB
1.5-2.7SEC 10HZ/24DB 50HZ/40DB
2.7-4.0SEC 10HZ/24DB 45HZ/40DB
4.0-6.0SEC 10HZ/24DB 40HZ/40DB
RADIAL PREDICTIVE FILTER:
7 TR -7 / 5 MS/TR 70% 1/P
BILATERAL MIX: TIME (SEC) WEIGHT (%)
0.0-0.9 5-90-5
0.9-2.5 10-80-10
TIME VARIANT EQUALIZATION: 200-800MS
NOTE:
A SHIFT OF -36MS HAS BEEN APPLIED IN
ORDER TO MATCH PREVIOUS PROCESSING



DATE OCTOBER, 1990
PROCESSED BY D. BORRINI
CONTROLLED BY P. STORER



0
-10
-20
-30
-40
-50



A.R75.SE ← A.C12.AG

