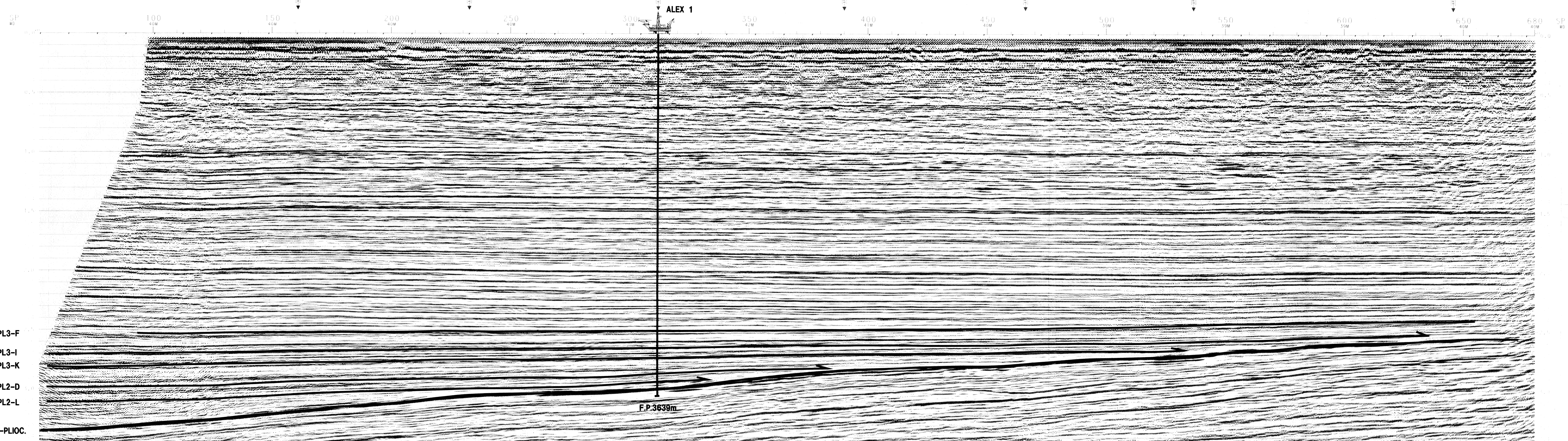


LINE: RR-65-84-15  
SP 100 TO SP 680  
4800% FILTERED MIGRATION

TIME (S)	NO. OF SAMPLES	VELOCITY (M/S)	DEPTH (M)
0.000	1	1500	0.000
0.005	1	1500	0.005
0.010	1	1500	0.010
0.015	1	1500	0.015
0.020	1	1500	0.020
0.025	1	1500	0.025
0.030	1	1500	0.030
0.035	1	1500	0.035
0.040	1	1500	0.040
0.045	1	1500	0.045
0.050	1	1500	0.050
0.055	1	1500	0.055
0.060	1	1500	0.060
0.065	1	1500	0.065
0.070	1	1500	0.070
0.075	1	1500	0.075
0.080	1	1500	0.080
0.085	1	1500	0.085
0.090	1	1500	0.090
0.095	1	1500	0.095
0.100	1	1500	0.100
0.105	1	1500	0.105
0.110	1	1500	0.110
0.115	1	1500	0.115
0.120	1	1500	0.120
0.125	1	1500	0.125
0.130	1	1500	0.130
0.135	1	1500	0.135
0.140	1	1500	0.140
0.145	1	1500	0.145
0.150	1	1500	0.150
0.155	1	1500	0.155
0.160	1	1500	0.160
0.165	1	1500	0.165
0.170	1	1500	0.170
0.175	1	1500	0.175
0.180	1	1500	0.180
0.185	1	1500	0.185
0.190	1	1500	0.190
0.195	1	1500	0.195
0.200	1	1500	0.200
0.205	1	1500	0.205
0.210	1	1500	0.210
0.215	1	1500	0.215
0.220	1	1500	0.220
0.225	1	1500	0.225
0.230	1	1500	0.230
0.235	1	1500	0.235
0.240	1	1500	0.240
0.245	1	1500	0.245
0.250	1	1500	0.250
0.255	1	1500	0.255
0.260	1	1500	0.260
0.265	1	1500	0.265
0.270	1	1500	0.270
0.275	1	1500	0.275
0.280	1	1500	0.280
0.285	1	1500	0.285
0.290	1	1500	0.290
0.295	1	1500	0.295
0.300	1	1500	0.300
0.305	1	1500	0.305
0.310	1	1500	0.310
0.315	1	1500	0.315
0.320	1	1500	0.320
0.325	1	1500	0.325
0.330	1	1500	0.330
0.335	1	1500	0.335
0.340	1	1500	0.340
0.345	1	1500	0.345
0.350	1	1500	0.350
0.355	1	1500	0.355
0.360	1	1500	0.360
0.365	1	1500	0.365
0.370	1	1500	0.370
0.375	1	1500	0.375
0.380	1	1500	0.380
0.385	1	1500	0.385
0.390	1	1500	0.390
0.395	1	1500	0.395
0.400	1	1500	0.400
0.405	1	1500	0.405
0.410	1	1500	0.410
0.415	1	1500	0.415
0.420	1	1500	0.420
0.425	1	1500	0.425
0.430	1	1500	0.430
0.435	1	1500	0.435
0.440	1	1500	0.440
0.445	1	1500	0.445
0.450	1	1500	0.450
0.455	1	1500	0.455
0.460	1	1500	0.460
0.465	1	1500	0.465
0.470	1	1500	0.470
0.475	1	1500	0.475
0.480	1	1500	0.480
0.485	1	1500	0.485
0.490	1	1500	0.490
0.495	1	1500	0.495
0.500	1	1500	0.500
0.505	1	1500	0.505
0.510	1	1500	0.510
0.515	1	1500	0.515
0.520	1	1500	0.520
0.525	1	1500	0.525
0.530	1	1500	0.530
0.535	1	1500	0.535
0.540	1	1500	0.540
0.545	1	1500	0.545
0.550	1	1500	0.550
0.555	1	1500	0.555
0.560	1	1500	0.560
0.565	1	1500	0.565
0.570	1	1500	0.570
0.575	1	1500	0.575
0.580	1	1500	0.580
0.585	1	1500	0.585
0.590	1	1500	0.590
0.595	1	1500	0.595
0.600	1	1500	0.600
0.605	1	1500	0.605
0.610	1	1500	0.610
0.615	1	1500	0.615
0.620	1	1500	0.620
0.625	1	1500	0.625
0.630	1	1500	0.630
0.635	1	1500	0.635
0.640	1	1500	0.640
0.645	1	1500	0.645
0.650	1	1500	0.650
0.655	1	1500	0.655
0.660	1	1500	0.660
0.665	1	1500	0.665
0.670	1	1500	0.670
0.675	1	1500	0.675
0.680	1	1500	0.680
0.685	1	1500	0.685
0.690	1	1500	0.690
0.695	1	1500	0.695
0.700	1	1500	0.700



LINE: AR-65-84-15  
SP 100 TO SP 680  
NORTHEAST  
4800% FILTERED MIGRATION

Marzo 1992 ALL... 1

# Petrex

AREA: ADRIATIC SEA - AR.65.SE

<p><b>WESTERN ATLAS INTERNATIONAL</b></p> <p><b>WESTERN GEOPHYSICAL</b></p> <p>DATE: MAR 1992 PROJECT: AR.65.SE</p>	<p>PROJECT: AR.65.SE DATE: MAR 1992 PROJECT: AR.65.SE</p>
<p><b>RECORDING DATA</b></p> <p>NO. OF CHANNELS: 100 NO. OF RECORDS: 100 NO. OF SAMPLES: 100 NO. OF STATIONS: 100</p>	<p><b>PROCESSING SEQUENCE</b></p> <p>1. DATA ACQUISITION 2. DATA CHECKING 3. DATA REFORMATTING 4. DATA SORTING 5. DATA FILTERING 6. DATA DECONVOLUTION 7. DATA STACKING 8. DATA EDITING 9. DATA PRINTING</p>
<p><b>SCALES</b></p> <p>HORIZONTAL: 1:1000 VERTICAL: 1:1000</p>	<p><b>COMMENTS</b></p> <p>ALL DATA CHECKED AND CORRECTED.</p>