

Table with 4 columns: SP, TIME, VEL, DIST. Values range from 0.09 to 0.20 and 1500 to 1800.

Table with 4 columns: SP, TIME, VEL, DIST. Values range from 0.11 to 0.20 and 1500 to 1800.

Table with 4 columns: SP, TIME, VEL, DIST. Values range from 0.11 to 0.20 and 1500 to 1800.

Table with 4 columns: SP, TIME, VEL, DIST. Values range from 0.11 to 0.20 and 1500 to 1800.

Table with 4 columns: SP, TIME, VEL, DIST. Values range from 0.11 to 0.20 and 1500 to 1800.

Table with 4 columns: SP, TIME, VEL, DIST. Values range from 0.11 to 0.20 and 1500 to 1800.

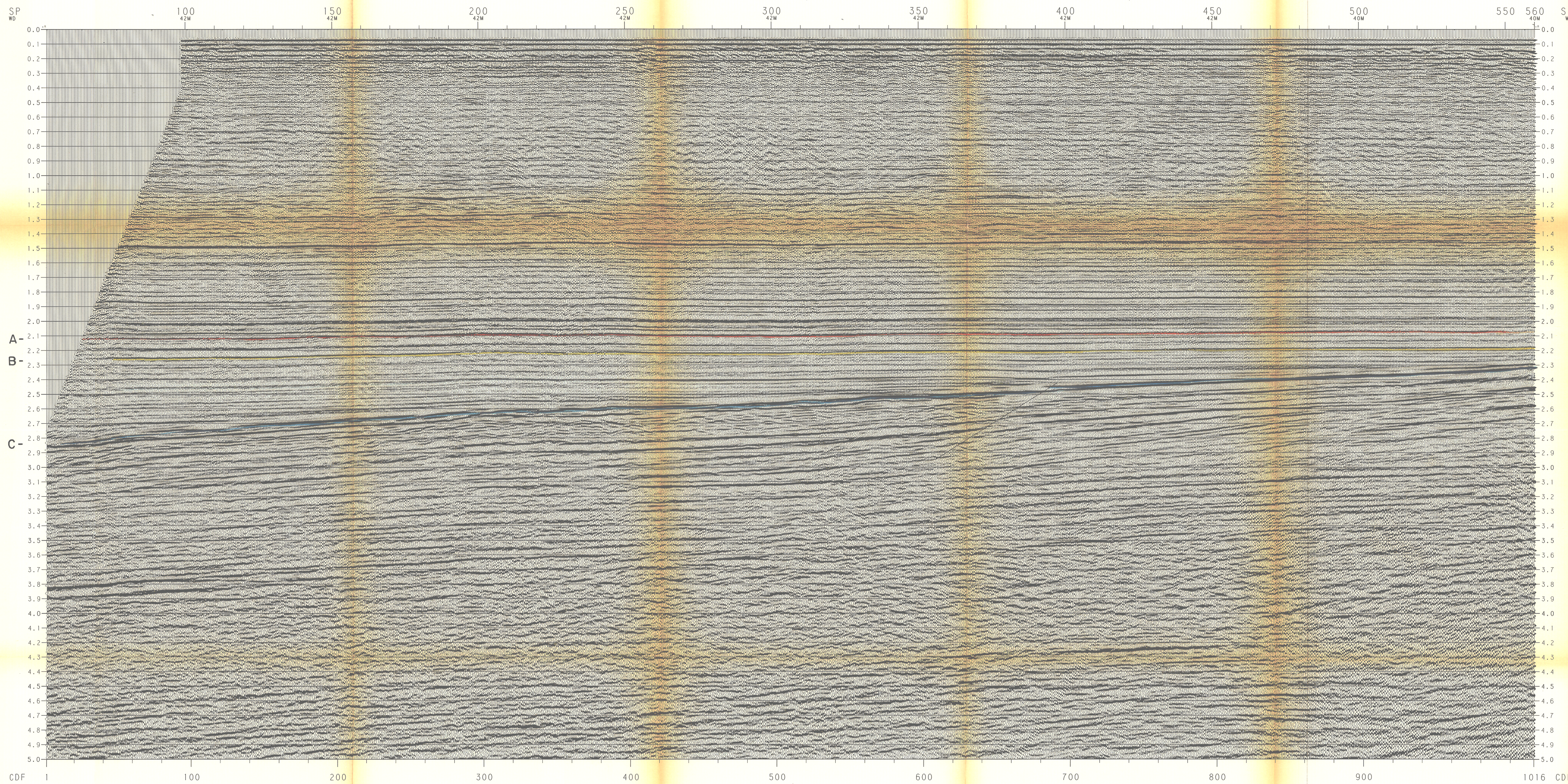
Table with 4 columns: SP, TIME, VEL, DIST. Values range from 0.11 to 0.20 and 1500 to 1800.

Table with 4 columns: SP, TIME, VEL, DIST. Values range from 0.11 to 0.20 and 1500 to 1800.

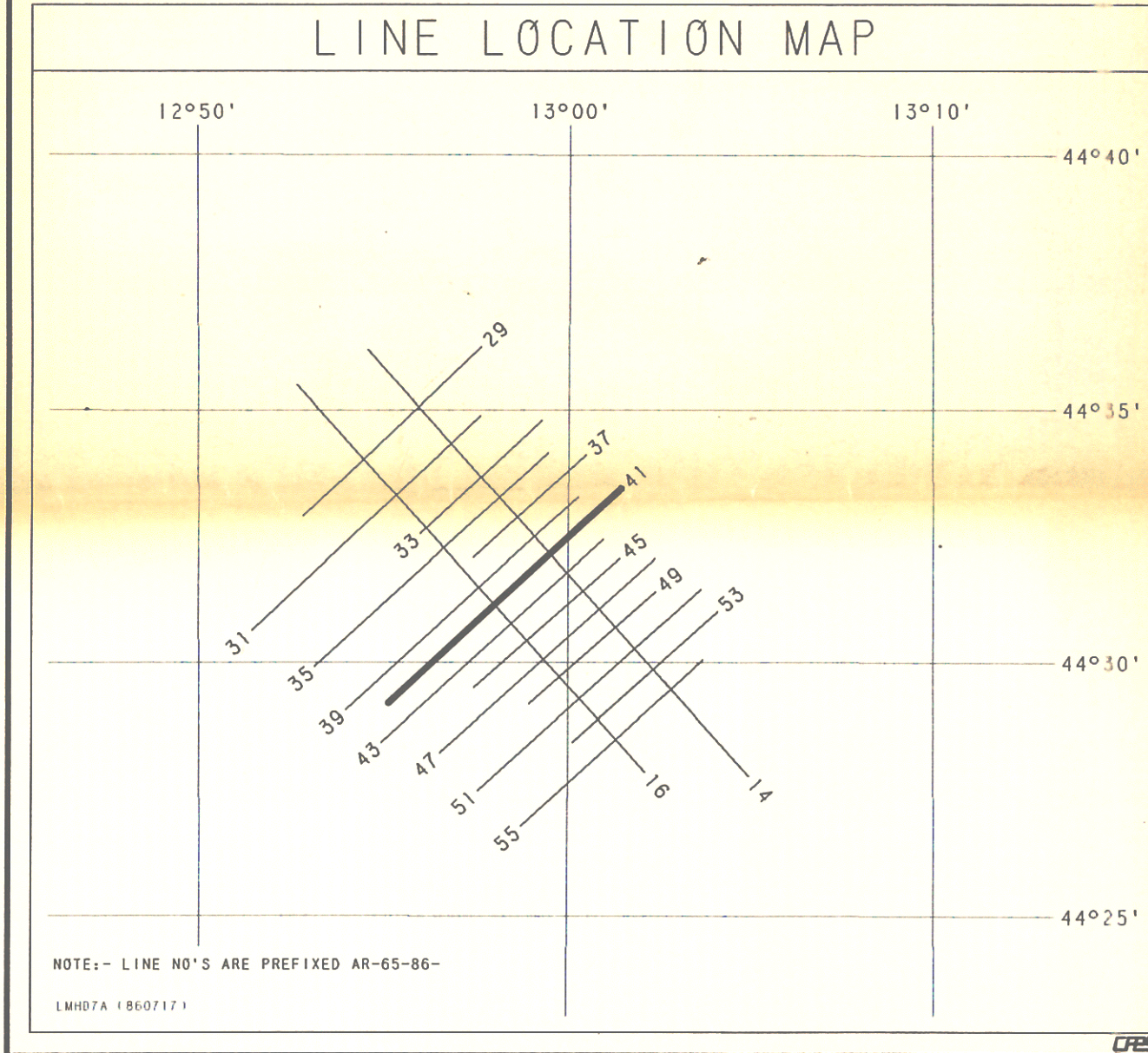
Table with 4 columns: SP, TIME, VEL, DIST. Values range from 0.11 to 0.20 and 1500 to 1800.

Table with 4 columns: SP, TIME, VEL, DIST. Values range from 0.11 to 0.20 and 1500 to 1800.

Table with 4 columns: SP, TIME, VEL, DIST. Values range from 0.11 to 0.20 and 1500 to 1800.



PETROMARINE ITALIA SPA
WESTERN GEOFYSICAL
 AREA: ADRIATIC SEA BLOCK AR-65
 RECORDING DATA: WESTERN EUROPA, W.G.C. PARTY 102, WIRETYPE 5161S, ENERGY SOURCE: AIRGUN, INSTRUMENTS: BPS V, CABLE: 20 PER GROUP
 PROCESSING SEQUENCE: DEMULTIPLIED, SIGNATURE DECONVOLUTION, PREPROCESSOR - D.B.S., VELOCITY ANALYSIS, EXPANDED WELAP, BRIDGE N.W.S. STAIR, P/K DIP FILTER, TIME VARIANT SPECTRAL WHITENING
 SCALES: HORIZONTAL 1:125,000, VERTICAL 1:25,000
 LEGEND: WATER DEPTHS, VELOCITY FUNCTION
 COMMENTS: DATUM PLANE IS SEA LEVEL, 0.00 AND CABLE CORRECTION OF 8 MS HAS BEEN APPLIED IN THE FINAL OUTPUT



LINE: AR-65-86-41
SP 100 TO SP 560
4800% DBS, DAS, TVSW, TVF.

