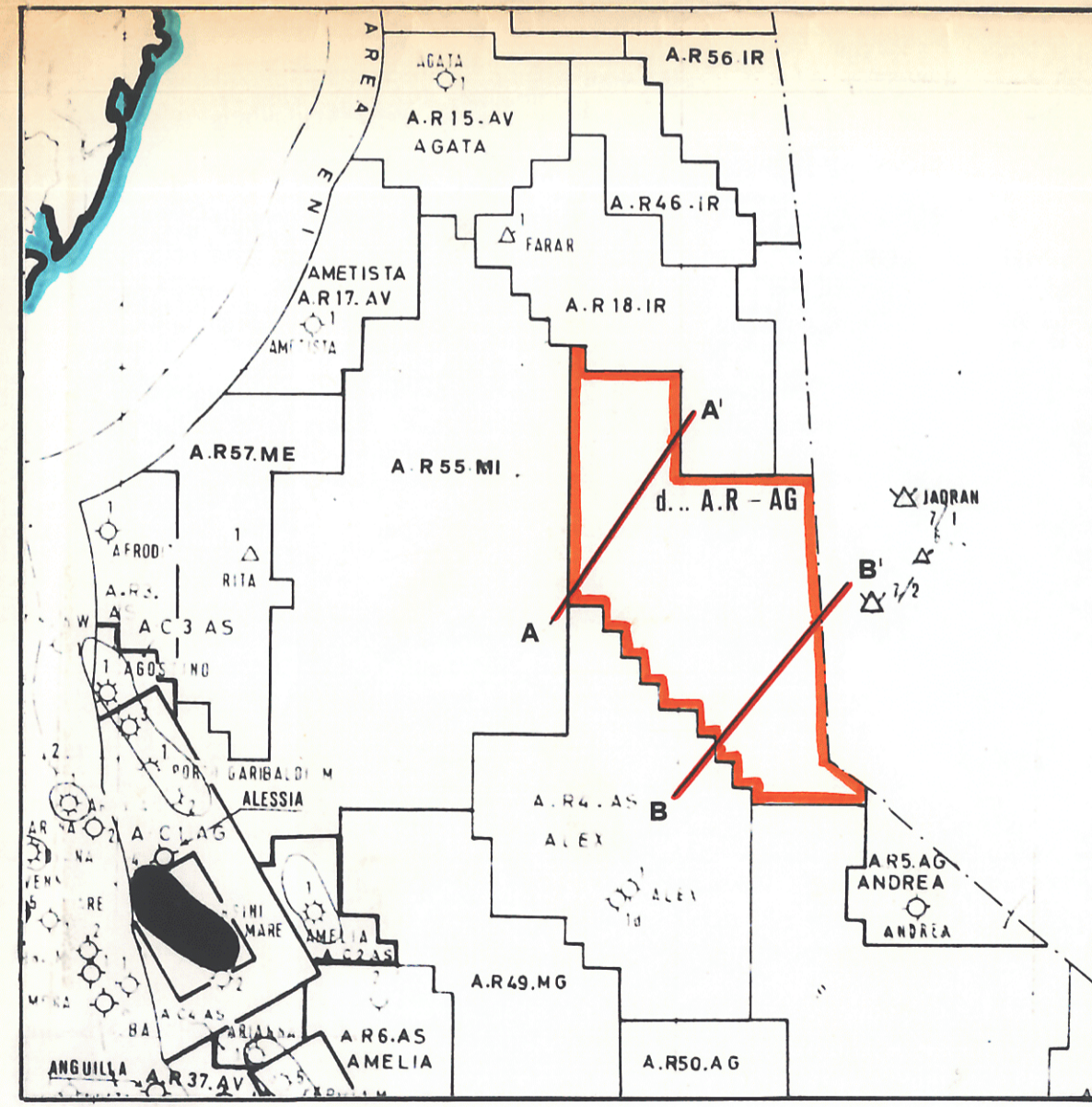


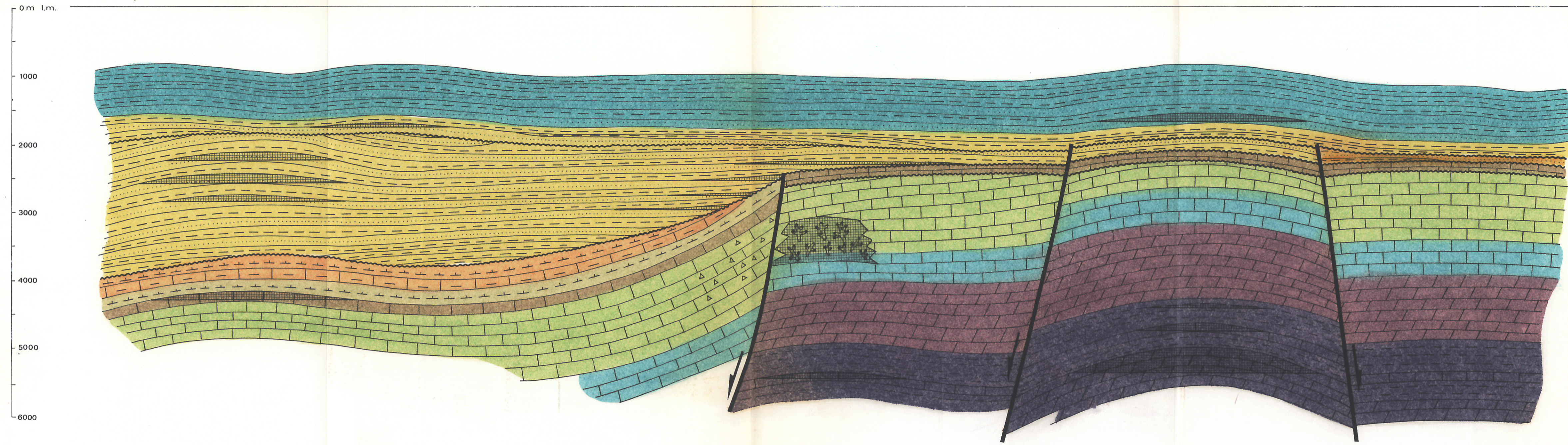
LEGENDA

- | | | | |
|--|--------------------|--|----------------------------------|
| | Quaternario | | Argille |
| | Pliocene | | Sabbia |
| | Miocene | | Marne |
| | Oligocene | | Calcari |
| | Eocene - Paleocene | | |
| | Cretacico | | Unconformity |
| | Giurassico | | Faglia |
| | Trias superiore | | Situazione d'interesse minerario |
| | Trias inf.-medio | | |

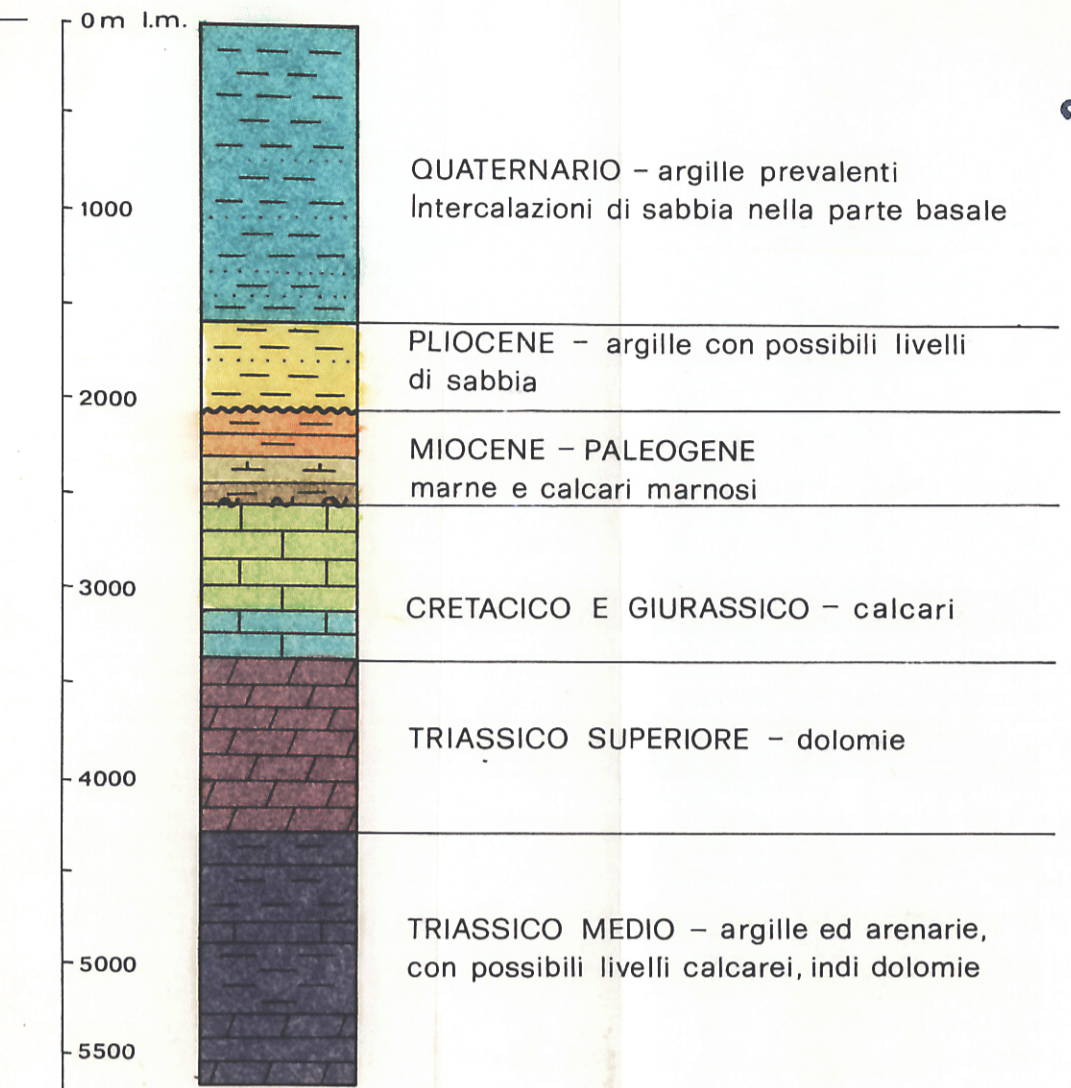
CARTA INDICE



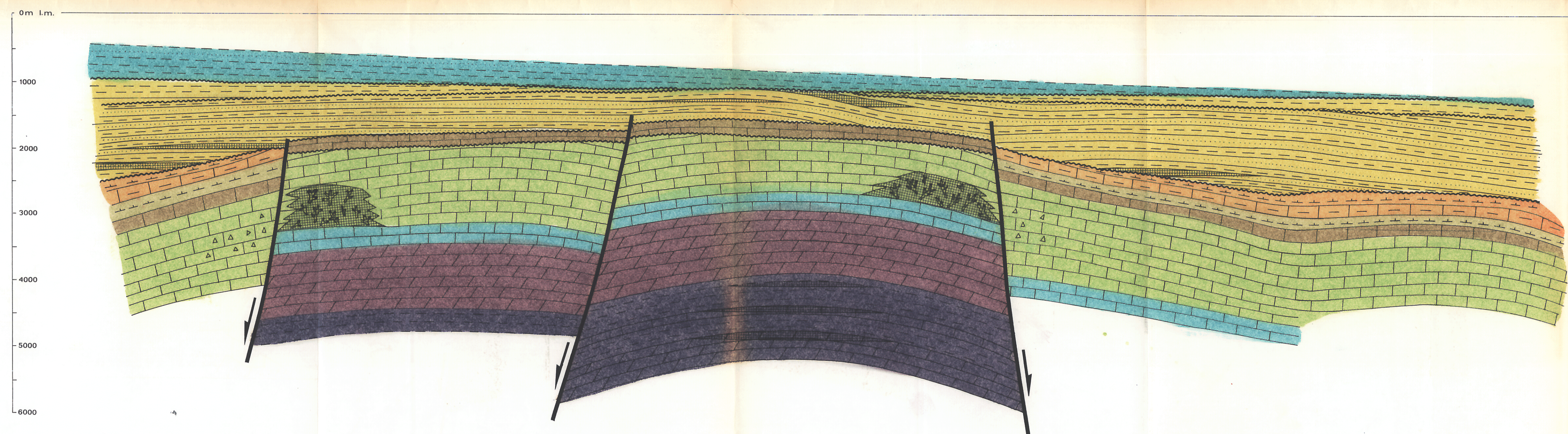
A
SW



A' PROFILI LITOSTRATIGRAFICI PREVISTI
SETTORE NORD-OCIDENTALE



B
SW



B' SETTORE SUD-ORIENTALE

