

LINE: A80-29
S.P. 53 TO 916

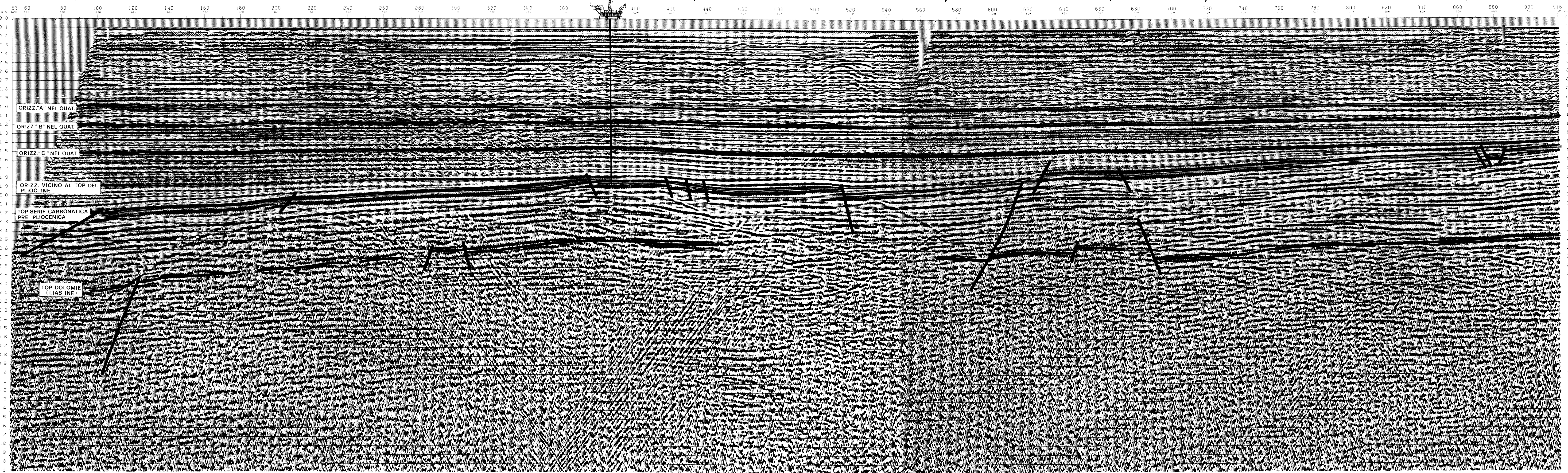
STATION	TIME	DEPTH	TEMP	SALINITY
53	1.00	1000	17.5	35.5
53	1.00	1500	17.5	35.5
53	1.00	2000	17.5	35.5
53	1.00	2500	17.5	35.5
53	1.00	3000	17.5	35.5
53	1.00	3500	17.5	35.5
53	1.00	4000	17.5	35.5
53	1.00	4500	17.5	35.5
53	1.00	5000	17.5	35.5
53	1.00	5500	17.5	35.5
53	1.00	6000	17.5	35.5
53	1.00	6500	17.5	35.5
53	1.00	7000	17.5	35.5
53	1.00	7500	17.5	35.5
53	1.00	8000	17.5	35.5
53	1.00	8500	17.5	35.5
53	1.00	9000	17.5	35.5
53	1.00	9500	17.5	35.5
53	1.00	10000	17.5	35.5

ASTRA 1
FP 1959 m

LINE: A80-29
S.P. 53 TO 916
4800% OBS. TVF.
NORTHEAST



Allegato	Data	Disegno n°
2	APRILE 1984	2293-2



AGIP

WESTERN GEOPHYSICAL
COMPANY OF AMERICA

<p>OFFSHORE ITALY</p> <p>RECORDING DATA</p> <p>BOAT: WESTERN SEA</p> <p>NUMBER OF GUN: 8</p> <p>GUN DEPTH: 1.14</p> <p>FOOT PER IN: 25.4</p> <p>S.P. INTERVAL: 25M</p> <p>INSTRUMENTS</p> <p>AMPLIFIER: 40</p> <p>FILTER: 0.5HZ</p> <p>RECORD LENGTH: 8 SECS</p> <p>FORMAL RATE: 2.50</p> <p>CABLE</p> <p>NUMBER OF STREAMERS: 80</p> <p>HYDROPHONE: 20 PER GROUP</p> <p>GROUP INTERVAL: 20M</p> <p>CABLE DEPTH: 10M</p>	<p>PROCESSING SEQUENCE</p> <p>DEMULTIPLEX</p> <p>SUBSAMPLE TO 4 MS SAMPLE RATE</p> <p>PREPROCESSOR: G.B.S.</p> <p>MIN. COMMON DEPTH: EARLY GATHER</p> <p>SE. GEOMETRIC SPREADING GAIN APPLIED</p> <p>ALL HIGHER FREQUENCY FILTER APPLIED</p> <p>NO. DECONVOLUTION: 1</p> <p>MIN. PHASE INVERSE FILTER</p> <p>WINDOW LENGTH: 2 X 2500 MS</p> <p>MINIMUM PREDICTIVE LAG: 100 MS</p> <p>LENGTH OF FILTER OPERATION: 200 MS</p> <p>ST. THREE PASSAGE: NO OUTPUT</p> <p>VELOCITY ANALYSIS</p> <p>EXPANDED VELOCITY</p> <p>N.M.S. - 4800% STACK</p> <p>SCALE</p> <p>SCALING</p> <p>LINE VARIANT FILTER</p> <p>TIME: 100% 150% 200% 300%</p> <p>0.004 10.000 10.000 10.000</p> <p>2.700 6.112 10.148</p> <p>FILTERS ARE INTERPOLATED IN TIME AND SPACE</p> <p>STRETCH AND SPECIFIED BY SIGN OF LINE</p> <p>COMMENTS</p> <p>BASELINE PLANE IS SEA LEVEL</p> <p>NO SUN AND TIDE CORRECTION IS APPLIED</p> <p>APPLIED IN THE FINAL DISPLAY</p> <p>COMPRESSION</p> <p>PULSES NEGATIVE AS NEGATIVE NUMBERS ON TAPE</p> <p>AND POSITIVE AS POSITIVE NUMBERS ON PLOTTING</p>
--	--

LEGEND

- INTERSECTIONS
- WATER DEPTH
- VELOCITY ANALYSIS

LINE LOCATION MAP