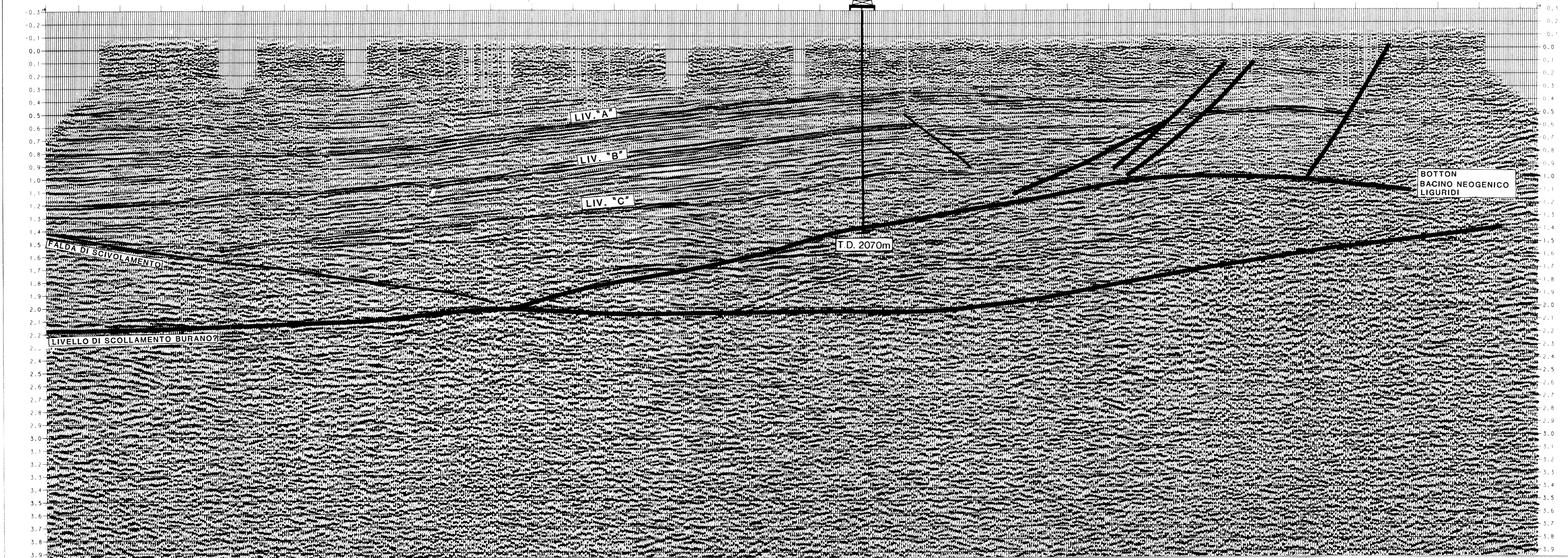
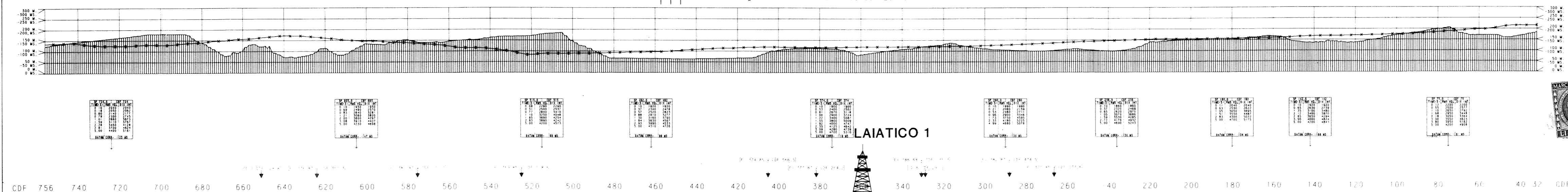




Agip

Allegato **2** Data **SETT. 1989** Dis. n. **812/3**



RECORDING DATA		PROCESSING SEQUENCE	
SHOT BY: GEOTALLA G17-2 DATE SHOT: FEBRUARY 1988 DATUM PLANE / STATICS INFORM: SEA LEVEL / 2000 W/SEC INSTRUMENTS: SERCEL SN 548, RECORDING LENGTH 120 WZ, ANTIALIAS FILTER 001 WZ, NOISE FLOOR 2 WZ, AMPLI RATE 2 WZ, RECORD LENGTH 18 SEC		DATE PROCESSED: MAY 1988 DEMULTIPLEX TO S.N. 4 GEOPHONE AMP: 1000 OUTPUT ALL POINTS DISPLAY FOR MANUAL EDITING RMS GAIN: GAIN WINDOW PROGRESSIVELY DOUBLED FROM 250 WZ TO 1000 WZ INSTRUMENT PHASE COMPENSATION RECORDER AND GEOPHONE RESPONSE SHAPED TO MINIMUM PHASE PREPROCESSOR OBS-CROOKED PROFILE PRES FILTER: 10/24 - 75/48 DECONVOLUTION TYPE: MINIMUM PHASE INVERSE FILTER NOISE WINDOW: 1-100 WZ MIN/MAX PRECTION DIST: 4-160 WZ TRACE BALANCE ON OUTPUT AND CDF SORT NOISE OUTPUT PROFILE SMOOTHED OVER 35 CDFs OUTPUT CDF INTERVAL: 20 WZ	
SOURCE ENERGY SOURCE: VIBROSEIS NO. OF VIBRATORS: 4 NO. OF SWEPT: 10 WZ SWEEP FREQUENCY: 10/24 UPWARD GROUND MOTION - NEG. NUM. ON TAPE		SEISMOMETER ARRAY GEOPHONES PER GROUP: 24 GEOPHONE TYPE: 14 WZ GEOPHONE FREQUENCY: 14 WZ	
SPREAD CONFIGURATION N. OF GROUPS: 120 GROUP INTERVAL: 40 WZ SUBSURFACE COVERAGE: 6000 WZ DIRECTION OF SHOOTING: NORTH-NW		VELOCITY ANALYSIS SURFACE CONS STENT RES. STATICS W/STAMP BEAM STEERING TIME WEIGHT: 100 - 10 20 30 1000 - 20 60 70 8100 - 20 60 70 VELOCITY ANALYSIS SURFACE CONS STENT RES. STATICS W/STAMP CROSS DIP REMOVAL CDF CONSISTENT RESIDUAL STATICS 3 TRACES MODEL 6000 X STACK STRETCH DEPENDENT MUTE RADIAL PREDICTIVE FILTER FEEDBACK: 70 TO 80 - 2 21 TRACE OPERATOR TAN PASS ZERO PHASE SHARPING STATISTICALLY COMPUTED OPERATOR TIME VARIANT FILTER TIME VARIANT FILTER: L.C. - 1/2 DB/OCT - N.C. 100 - 1000 10/24 1-200 10/24 1-500 10/24 1-1000 10/24 1-2000 10/24 1-4000 10/24 REFLECTION STRENGTH GAIN MAXIMUM STANDBY: 2.0 RMS GAIN: GAIN WINDOW PROGRESSIVELY DOUBLED FROM 250 WZ TO 1000 WZ PLAYBACK: PLOT DIRECTION R TO L NEGATIVE NUMBER = WHITE TROUGHS	
AREA MAP 		HORIZONTAL SCALES 1:1000 VERTICAL SCALES 100MS/SEC 1:1 LEGEND VELOCITY FUNCTION INTERSECTIONS O.C. FOR GEOTALLA G. Vicanti	