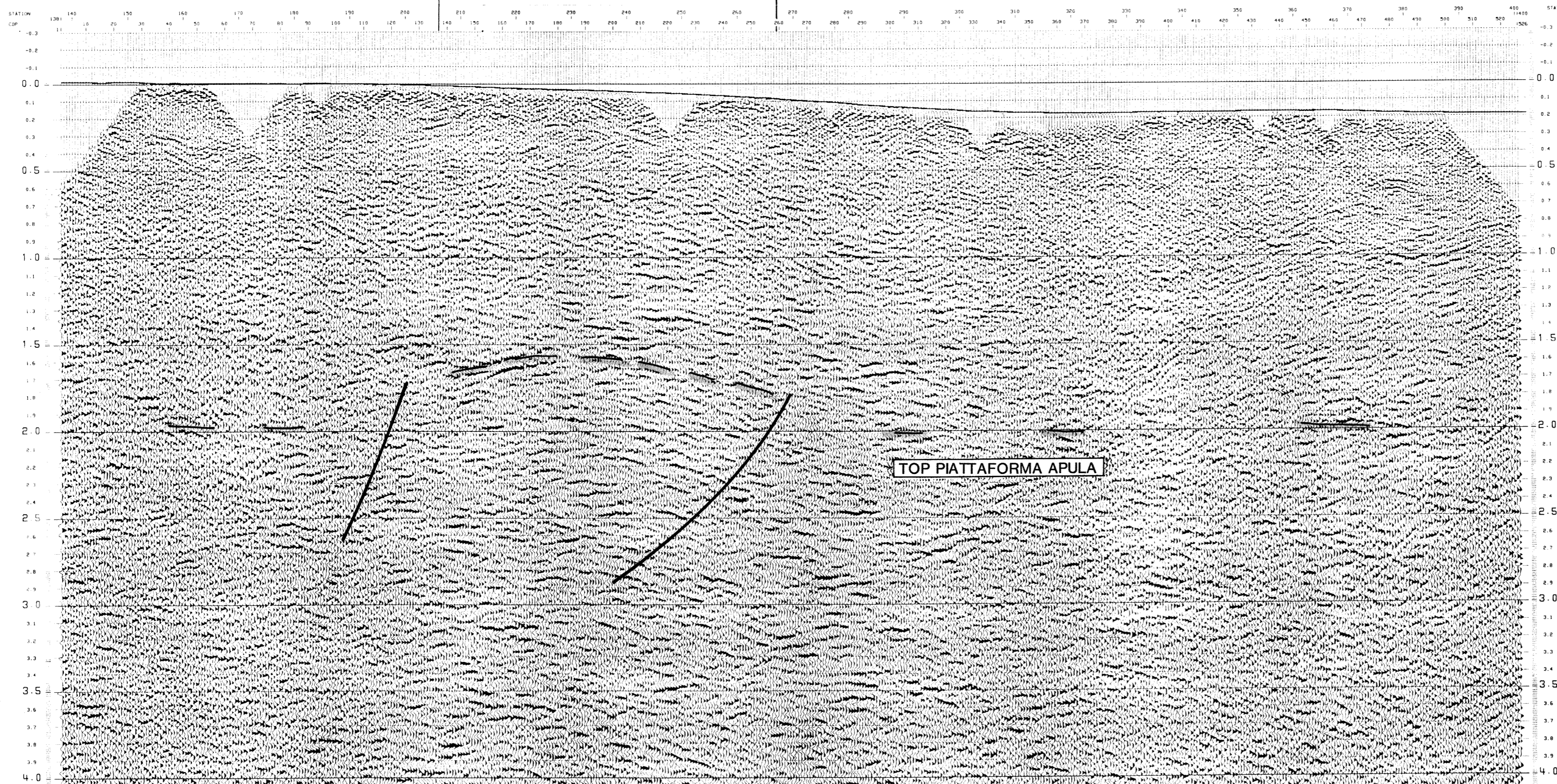


DATA	DIS. N	FIGURA
LUGLIO 1989	570 B/3	2



"LEAD" MONTE PINO



SSW 153 385 NNE

DIRECTION OF PROGRESS

COHERENCY STACK
TUF
3000 0/0 FOLD COVERAGE

127 MB 78 * PL 1 33BAR
* LOG PROJECT NUMBER DATE OCTOBER, 1988

FIELD RECORDING PARAMETERS

CONTRACTOR	G.S.S. PIRELLA	SAMPLING INTERVAL	2 MS
DATE	15.07 TO 22.07 1988	RECORD LENGTH	7.5
RECORDING UNIT	SR 184 R	FILTERS	
TAPES	500-B 4250 BPI MB 34512-34514	LF 12	RZ (12 08/OCT)
FORMAT	305-B	RF 178	RZ (12 08/OCT)
FOLD COVERAGE	3000 0/0	NOTCH	OUT

SOURCE/RECEIVER PARAMETERS

** SOURCE **
EXPLOSIVE

NUMBER OF HOLES PER SP	1	SHOT	SPLIT SPREAD
AVERAGE CHARGE PER SHOT	6 KG	OFFSET	28 + 24 M
AVERAGE SHOT DEPTH	10 TO 13 M	SP INTERVAL	80 M

** RECEIVER **

GEOPHONE TYPE	584	NUMBER OF GROUPS	120
PRODUCTION	10 RZ	DISTANCE BETWEEN GROUPS	40 M
NUMBER PER GROUP	24		

SPREAD CONFIGURATION

SURFACE CORRECTIONS

RETROD	UPWAVE-OROGRAPHIC	DATUM PLANE	400 M
RETURN TO DP VELOCITY	2500 M/S	CORRECTION SIGN	REDUCES TIME VALUES
			* CONSTANT FOR WADLE LINE

PROCESSING : CGG

SIGNAL LENGTH PROCESSED : 7.5

DEMULTIPLIXING	POLATION BETWEEN VELOCITY FUNCTION
RESAMPLING 2 MS TO 4 MS	STATIC CORRECTIONS (FROM DPC TO EPI)
EDITING NOTES	AUTOMATIC SHORT WAVE LENGTH
REFLECTION POINT GATHERING	RESIDUAL STATIC CORRECTION (SATAN 1)
AMPLITUDE RECOVERY	CALCULATION GATE : 1100-3500 MS
RAWD PASS FILTER 1-15 RZ	STACK 3000 0/0 FOLD
SHAKE DECONVOLUTION	TIME VARIANT FILTER
NUMBER PHASE : 2 OPERATORS: L-12045	0-1.13 (482/300/OCT) -55KZ(480/OCT)
100-200 MS. PREEMPHASIS 05 0/0	2.25 (282/340/OCT) -55KZ(480/OCT)
100-350 MS. PREEMPHASIS 10 0/0	3.25 (102/350/OCT) -45KZ(480/OCT)
100-350 MS. PREEMPHASIS 10 0/0	7.05 (382/350/OCT) -35KZ(480/OCT)
TRACE EQUALIZATION L 600 MS	SPATIAL COHERENCY ENHANCEMENT
STATIC CORRECTIONS (FROM GROUND LEVEL TO DPC 4)	OPVS ** RES/TRACE
AUTOMATIC WADLE WAVE LENGTH	NUMBER OF TRACES 11
RESIDUAL STATIC CORRECTIONS	VARIABLE FROM 20 TO 60 PER CENT
TRACE EQUALIZATION	TRACE EQUALIZATION
(SATAN IV - RF 3)	L 400 MS ; T 100-7500 MS
CALCULATION GATE : 500-3000 MS	L 1000 MS ; T 500-7500 MS
VELOCITY ANALYSIS 1	ANALOG DISPLAY
WMO CORRECTIONS (LINEAR INTER-)	SCALES: HORIZONTAL : 1/25000
	VERTICAL : 1/8 CM/SEC.

* DPC : THE AVERAGE GROUND LEVEL ELEVATION IS REPRESENTED BY A BLACK PEAK AT THE TOP OF THE SECTION.

POLARITY CONVENTION

COMPRESSION=NEGATIVE VALUE ON TAPE
AFTER PROCESSING=WHITE TROUGH ON SECTION