

ELF ITALIANA S.P.A.

VILLALFONSIINA

1-B2-UL5

101 423

WEST EST

MISSION 127 35 35

STACK AMCO-D

SLALON LINE**

ENREGISTREMENT TERRAIN

SOURCE ET BASE SISMOGRAPHIQUE

SCHEMAS

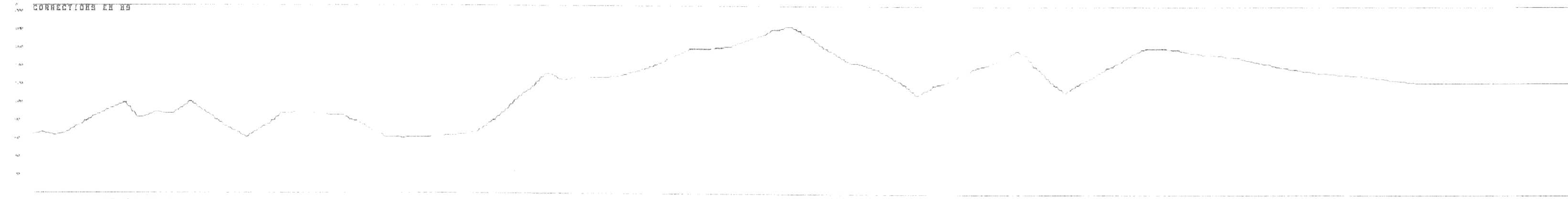
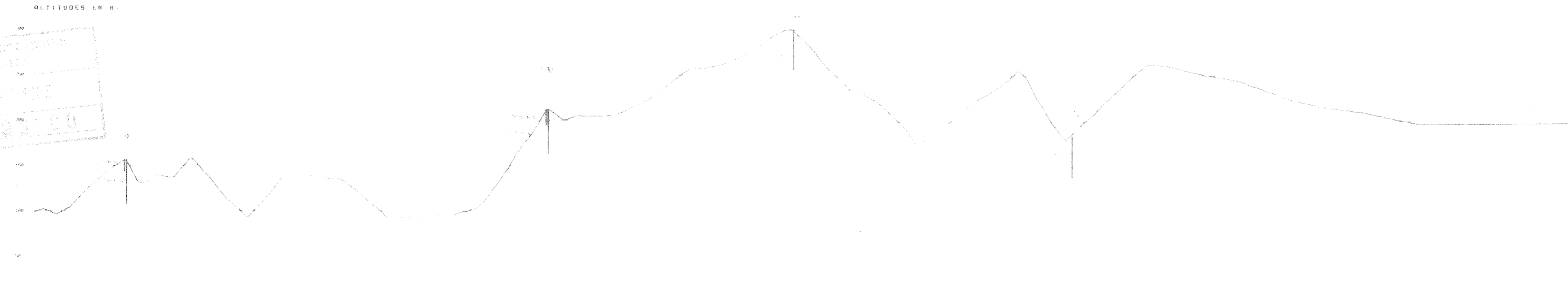
CORRECTIONS DE SURFACE

OBSERVATIONS

TRAITEMENT NUMERIQUE

PARAMETRES DE PEJEU

ALTITUDES EN M.



1 80 013 PT143 1 76 016 PT147 1 82 013 PT159 1 76 016 PT165 1 82 014 PT160 1 76 016 PT165

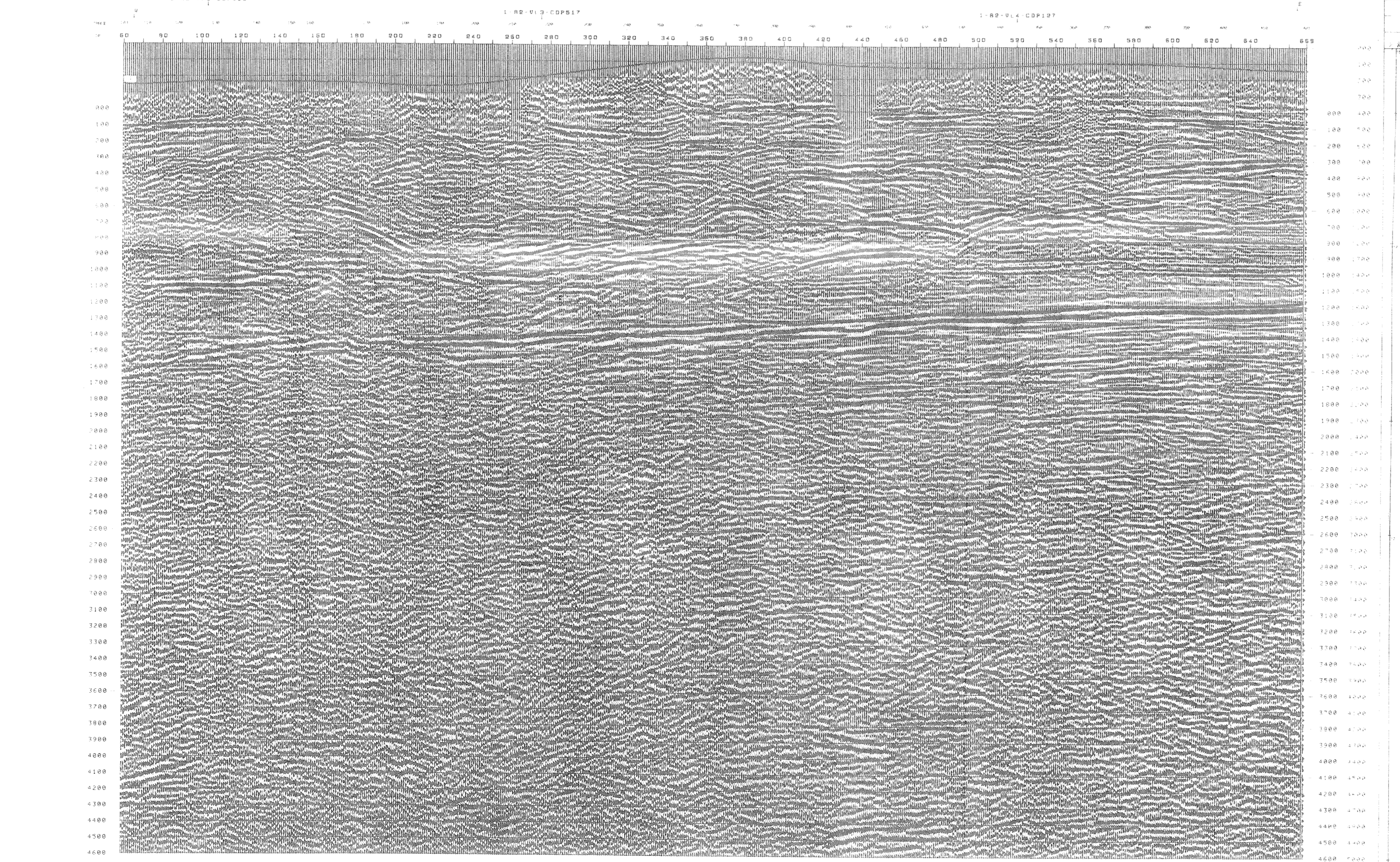
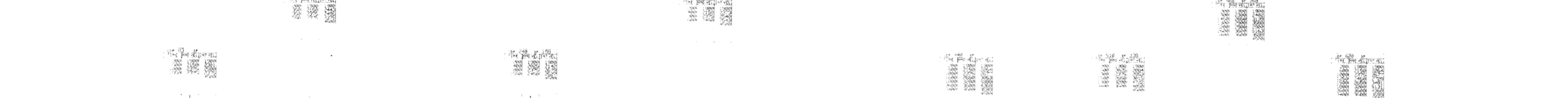
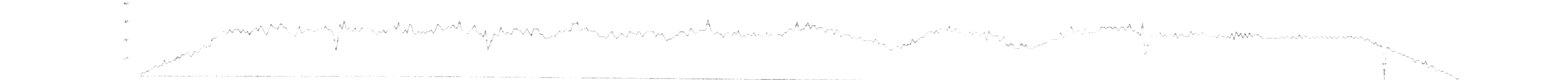


Table with 2 columns: X (m) and Y (m). Values range from 100 to 650 on the X-axis and 0 to 4600 on the Y-axis.

SLALON LINE

