

- ① TOIT AMERILLO
- ② TOIT HYBLA
- ③ TOIT VILLAGONIA
- ④ BASE STREPPENOSA

PERMIS: VILLA BARCO
 PROSPECT "BOSCO 1"
 PROFIL SISMIQUE
 VB 39-83

83 VB 38/177

VB 82 08/106

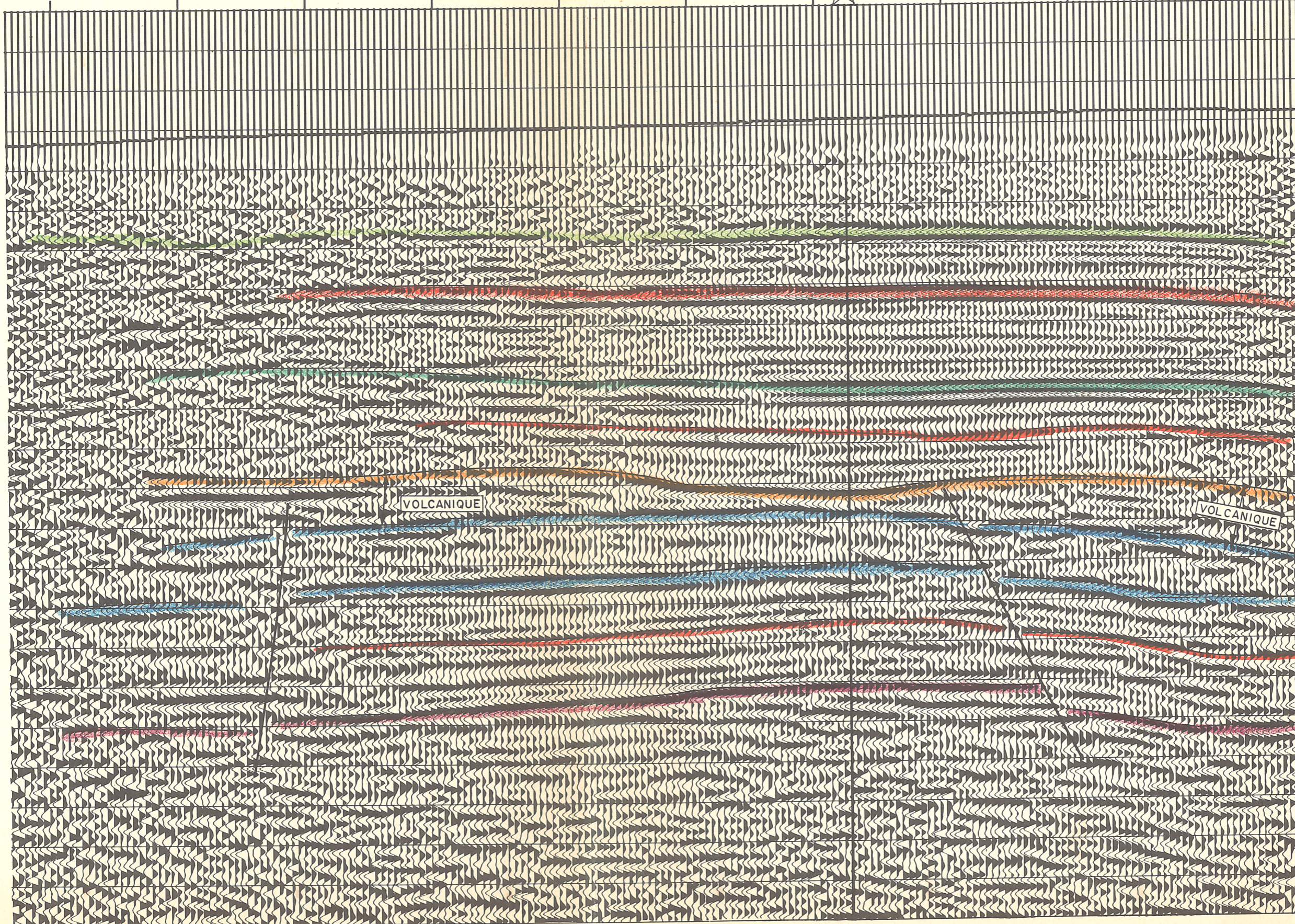
VB 82 23/163

SW

NE

TRACCE
CDP

200 190 180 170 160 150 140 130 120 110 103
 200 180 160 140 120 100 80 60 40 20 4



TEMPS
 DOUBLES
 DP=+300m
 000
 100
 200
 300
 ① 400
 Amerillo
 500
 ② 600
 Hybla
 700
 Busambra
 800
 900
 VOLCANIQUE
 Giardini
 1000
 ③ 1100
 Villagonia
 1200
 1300
 Streppenosa
 ④ 1400
 1500
 Taormina
 1600
 1700
 1800
 1900