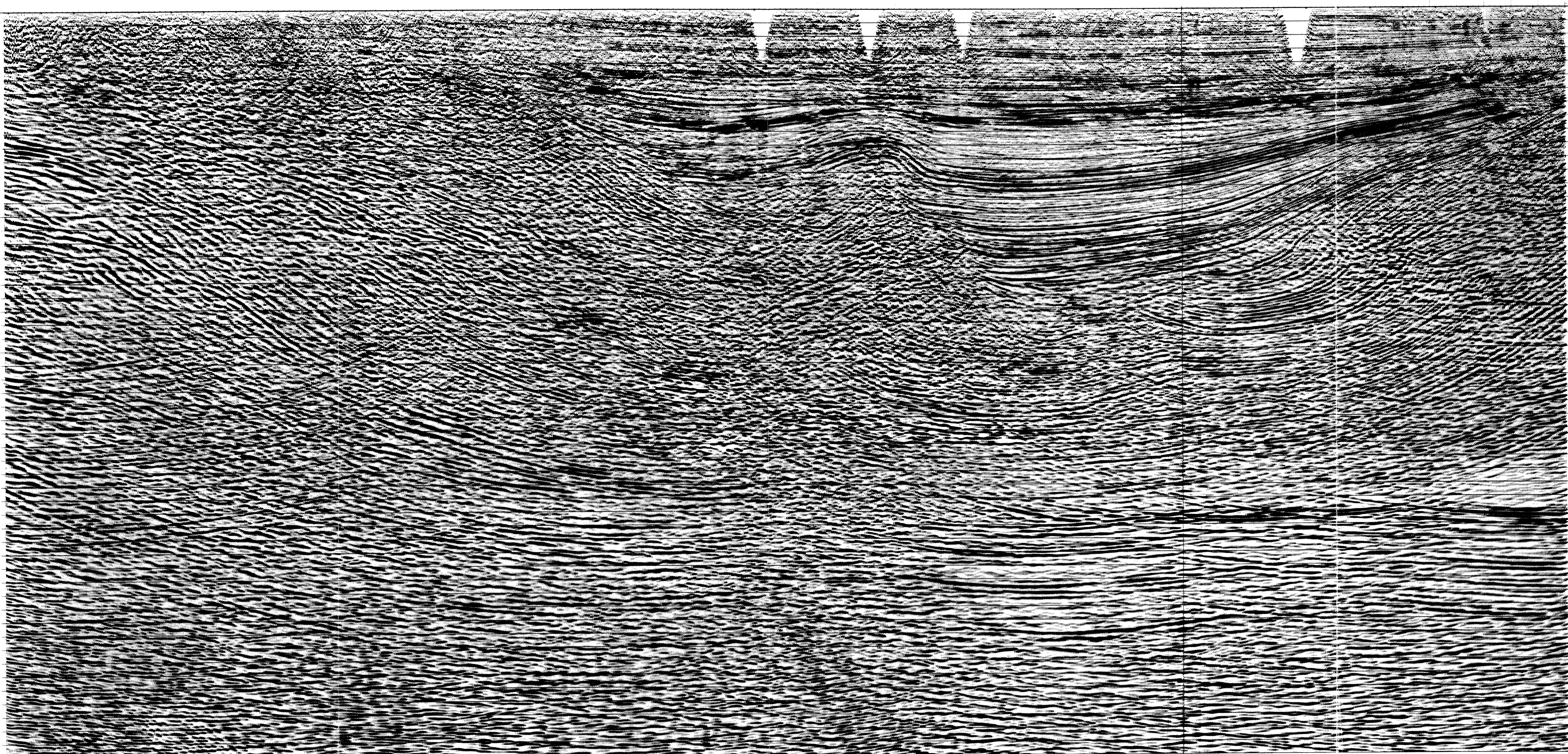


(Linea nuovi parametri di acquisizione)

NO INTERSECTIONS TO DATE

NO INTERSECTIONS TO DATE



INTERNATIONAL LIMITED

AREA: ITALY ONSHORE  
VILLA BADESSA

WESTERN GEOPHYSICAL  
# 22 CONTRACT: OCTOBER-NOVEMBER 1989  
DATE SHOT: OCTOBER 1989  
PROCESSED IN LOS ANGELES, CALIF. JANUARY 1990

RECORDING DATA	PROCESSING SEQUENCE
<p><b>RECORDING PARAMETERS</b></p> <p>REORDER TYPE: SOURCE, SN, 348            RECORD LENGTH: 4000 MSEC            SAMPLING RATE: 200 MSEC            FILTER LONG: 1200/100/1250/70 BY MSEC            TAPE FORMAT: 6250 BY SEC 8            POLARITY: UPWARD GROUND MOVEMENT IS A NEGATIVE NUMBER ON TAPE</p> <p><b>SOURCE</b></p> <p>ENERGY SOURCE: DYNAMIC            NOMINAL SHOT INTERVAL: 50 METRES            SHOT PATTERN: SINGLE HOLE            CHARGE: 400 G            DEPTH OF CHARGE: 20 METRES            SHOT: HIGH NUMBERED STATIONS TO LOW</p> <p><b>RECEIVERS</b></p> <p>GEOPHONE TYPE: SMI 8 JAR            GEOPHONES PER GROUP: 5 STRINGS OF 5            GEOPHONE INTERVAL: 2.5 METRES            NUMBER OF GROUPS: 200            GROUP INTERVAL: 25 METRES</p> <p><b>RECEIVER ARRAY</b></p> <p>ARRAY LENGTH: 40 METRES</p> <p><b>SURFACE DIAGRAM</b></p> <p>60 8 120</p>	<p><b>EDIT</b></p> <p>DEMULTIPLY: RESAMPLE TO 4 MSEC WITH ANTI-ALIAS FILTER REMOVE FREQUENCIES ABOVE 4000 MSEC IN 6004 FORMAT</p> <p><b>PREPROCESSOR</b></p> <p>TRACE EDIT: ASSIGN GEOMETRY            WINDOW PHASE FILTER TO: 40 80 800            1/4 AMPITUDE RECOVERY FUNCTION AFTER DELTA ANALYSIS LINE'S PREFILTERED UNSTACKED UNDECONVOLVED DATA SORT TO CD# ORDER</p> <p><b>DECONVOLVE</b></p> <p>SURFACE CONSISTENT DECONVOLUTION            TWO WINDOWS DIVIDING TRACE EVENLY            WINDOW LENGTH: 200 MSEC            BALANCE DECONVOLVED DATA TO RM 2000</p> <p><b>VELOCITY ANALYSIS</b></p> <p>7 MATRIX-CVS-CVS            11 CD#S PER MATRIX 17 CD#S PER CVS</p> <p><b>RESTORE STATION</b></p> <p>WISEP 1ST PASS            MODEL FILTER: 10-45 HZ            ONE WINDOW: 500-3200 MSEC            MAXIMUM SHIFT: 74 MSEC</p> <p><b>VELOCITY ANALYSIS</b></p> <p>EXPANDED VELOCITY            ON CMP GATHERS AT SELECTED LOCATIONS            ABOUT 1 KM APART WITH PRE-STACK TIME MIGRATION AND 0.15 MSEC CORRECTION            CD#S SUMMED PER ANALYSIS            21 CD#S PER VELOCITY FUNCTION STACK</p> <p><b>RESTORE STATION</b></p> <p>WISEP 2ND PASS            MODEL FILTER: 10-45 HZ            ONE WINDOW: 500-3200 MSEC            MAXIMUM SHIFT: 74 MSEC</p> <p><b>DMC, MUTE &amp; DMF STACK</b></p> <p>VELOCITIES AS LISTED ON TOPHEADER            VELOCITIES AS LISTED ON TOPHEADER            SURFICIAL MUTE APPLIED AFTER MDC            OPERATIONAL: 100 150 300 1500            TIME MUTE: 20 100 500 1500            PRE-STACK PARTIAL 1/4 MIGRATION AND STACK            NORMAL FDS: 3000</p> <p><b>MIGRATION</b></p> <p>OMEGA: MIGRATION FROM DATUM DOWN            VELOCITY: 1.80 1.85 1.90 1.95 2.00            6 1/2 PRE-STACK PARTIAL MIGRATION</p> <p><b>TIME-VARIANT FILTER</b></p> <p>TIME LOW CUT SLOPE: 1/100 SLOPE            MFC: 18 18 18 18 18 18 18 18            400: 18 18 18 18 18 18 18 18            800: 18 18 18 18 18 18 18 18</p> <p><b>GAIN</b></p> <p>ACC: RMW-200            GATES: MSEC: 1 FIRST-200; LATER-400</p> <p><b>PLAYBACK</b></p> <p>GEOPHONIC ONLINE PLOTTER: GAIN: 9 DB            POLARITY: NORMAL - NEGATIVE NUMBER            PLOT AS WHITE TROUGHS TO THE LEFT            DATUM PLANE = MEAN SEA LEVEL</p>
<p><b>AREA MAP</b></p>	<p><b>SCALES</b></p> <p>HORIZONTAL: 1:25,000            VERTICAL: 5 CM/SECOND</p>

LASMO  
International Limited - Roma

Permesso VILLA BADESSA

LINEA SISMICA  
VB - 01 - 89  
(Esplosivi)