

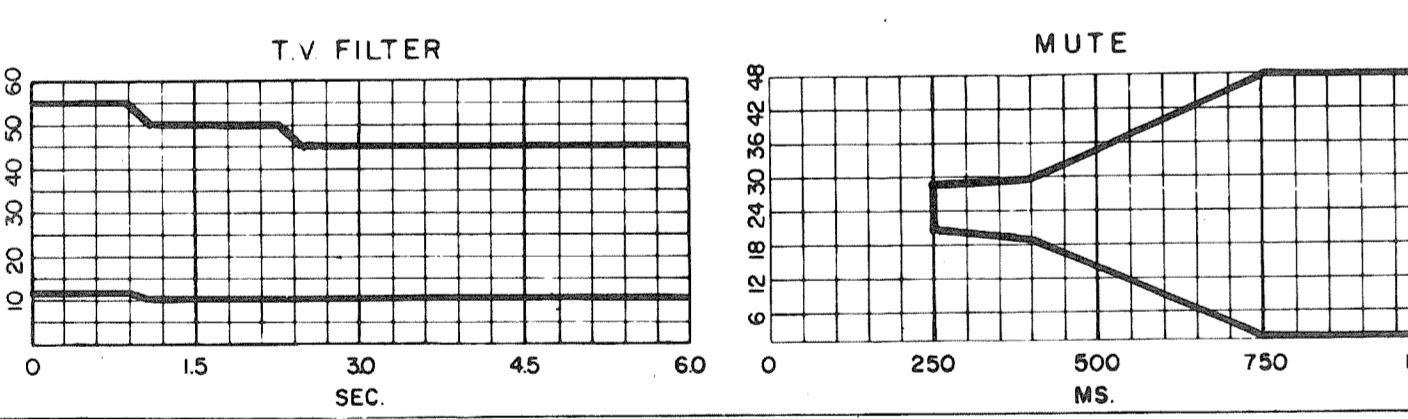


SNIA VISCOSA AREA VENOSA WESTERN RICE RICHE GEOPHISICHE s.p.a.

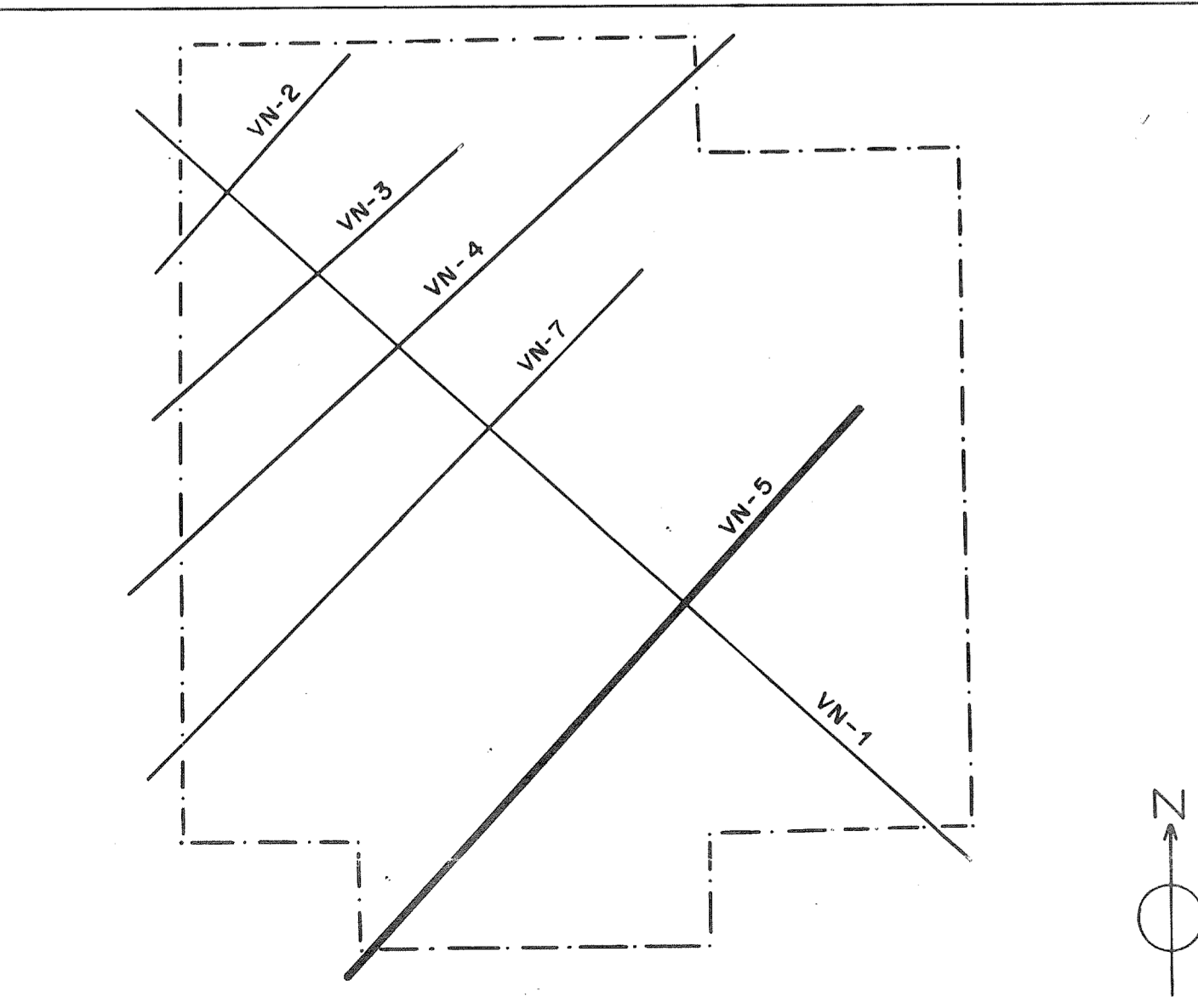
RECORDING DATA		PLAYBACK DATA	
SHOT BY	SIAG	SAMPLE RATE	4 ms
PARTY	A121	RECORD LENGTH	6000 ms
MAGNETIC RECORDER	DFS W	AMPLITUDE	16
GAIN	2 m	WEATHERING VEL.	2000 m/sec
RECORD LENGTH	6000ms	SUBWEATHERING VEL.	SEA LEVEL
FILTER	8 Hz	Scale	VERTICAL 1 Sec 9.5 cm
ALIASING FILTER	128 Hz		HORIZONTAL 1 Km 8.46 cm
SUBSURFACE COVERAGE	600%	PREPROCESSOR REEL No.	75703
DATE	MAY 1978	STACK REEL No.	82584
		DATE	JULY 1978

FIELD DATA		SKETCH	
SPREAD CONFIGURATION	1275-125/125-1275 meters	SPREAD	24 SP 25 48
ENERGY SOURCE	DYNAMITE		
SHOT HOLES / SHOT	10 Kg		
AVERAGE CHARGE / SHOT	20 m		
AVERAGE SHOT DEPTH			
GEOPHONE PATTERN			
GROUP INTERVAL	50 m		
GEOPHONES / GROUP	24		
GEOPHONE FREQUENCY	10 Hz		

PROCESSING	
TRANSCRIPTION	RESIDUAL STATICS
EDIT-DEMULPLEX ONLY OUTPUT	COMMON DEPTH POINT METHOD
EDIT-GAINED OUTPUT	COMMON OFFSET METHOD
EDIT-GEOPHONE AMPLITUDE OUTPUT	COMMON SHOT METHOD
	COMMON RECEIVER METHOD
	MANUAL
CORRELATION	STACK
PREPROCESSOR	WEIGHTED STACK
	COHERENCY STACK
STATIC CORRECTIONS	PREFILTER
BEFORE NMO	SPECIAL GAIN ROUTINE
AFTER NMO	SPECIAL MUTE
DYNAMIC CORRECTIONS	FREQUENCY FILTER
STRAIGHT RAY	MULTICHANNEL FILTER
CURVED RAY	RADIAL PREDICTIVE FILTER
	CONTINUOUS VELOCITY ANALYSIS
PRELIMINARY STACK	
100% CORRECTED	
100% SELECTED TRACES	
MINI SECTION	
VELOCITY ANALYSIS	
PREDICTIVE TIME DOMAIN DECON	PREDICTION DISTANCE OPERATOR LENGTH No WINDOWS
BEFORE STACK	16 160 3
AFTER STACK	



VELOCITY FUNCTION CHANGE INTERSECTION VELOCITY ANALYSIS LOCATION



ANALYST CLARK VANDELL

