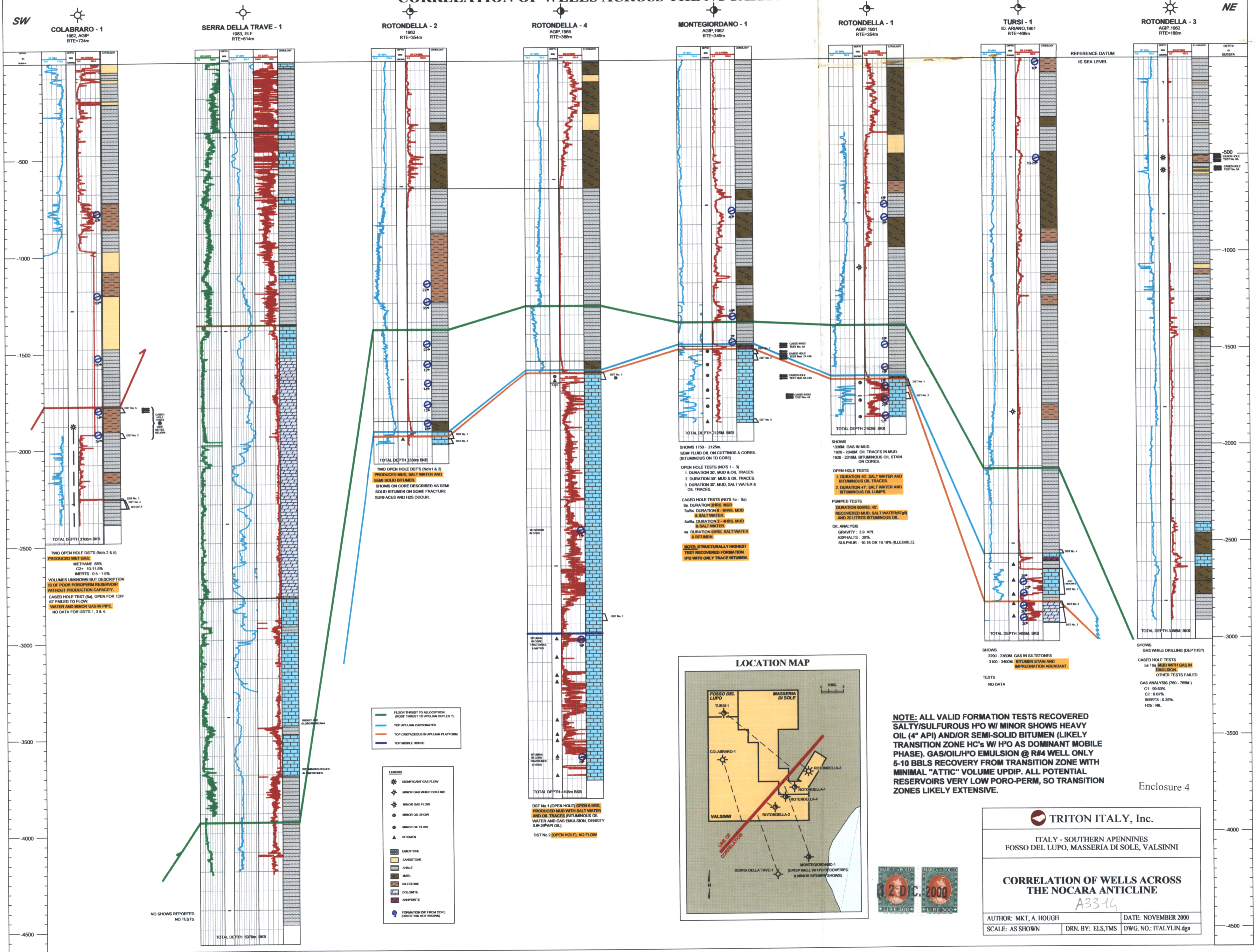


ITALY - SOUTHERN APENNINES - FOSSO DEL LUPO, MASSERIA DI SOLE, VALSINNI CORRELATION OF WELLS ACROSS THE NOCARA ANTICLINE



NOTE: ALL VALID FORMATION TESTS RECOVERED SALTY/SULFUROUS H₂O W/ MINOR SHOWS HEAVY OIL (4° API) AND/OR SEMI-SOLID BITUMEN (LIKELY TRANSITION ZONE HC's W/ H₂O AS DOMINANT MOBILE PHASE). GAS/OIL/H₂O EMULSION @ R#4 WELL ONLY 5-10 BBL'S RECOVERY FROM TRANSITION ZONE WITH MINIMAL "ATTIC" VOLUME UPDIP. ALL POTENTIAL RESERVOIRS VERY LOW PORO-PERM, SO TRANSITION ZONES LIKELY EXTENSIVE.

Enclosure 4

TRITON ITALY, Inc.

ITALY - SOUTHERN APENNINES
FOSSO DEL LUPO, MASSERIA DI SOLE, VALSINNI

**CORRELATION OF WELLS ACROSS
THE NOCARA ANTICLINE**

A3316

AUTHOR: MKT, A. HOUGH DATE: NOVEMBER 2000
SCALE: AS SHOWN DRN. BY: ELS,TMS DWG. NO.: ITALYLIN.dgn

