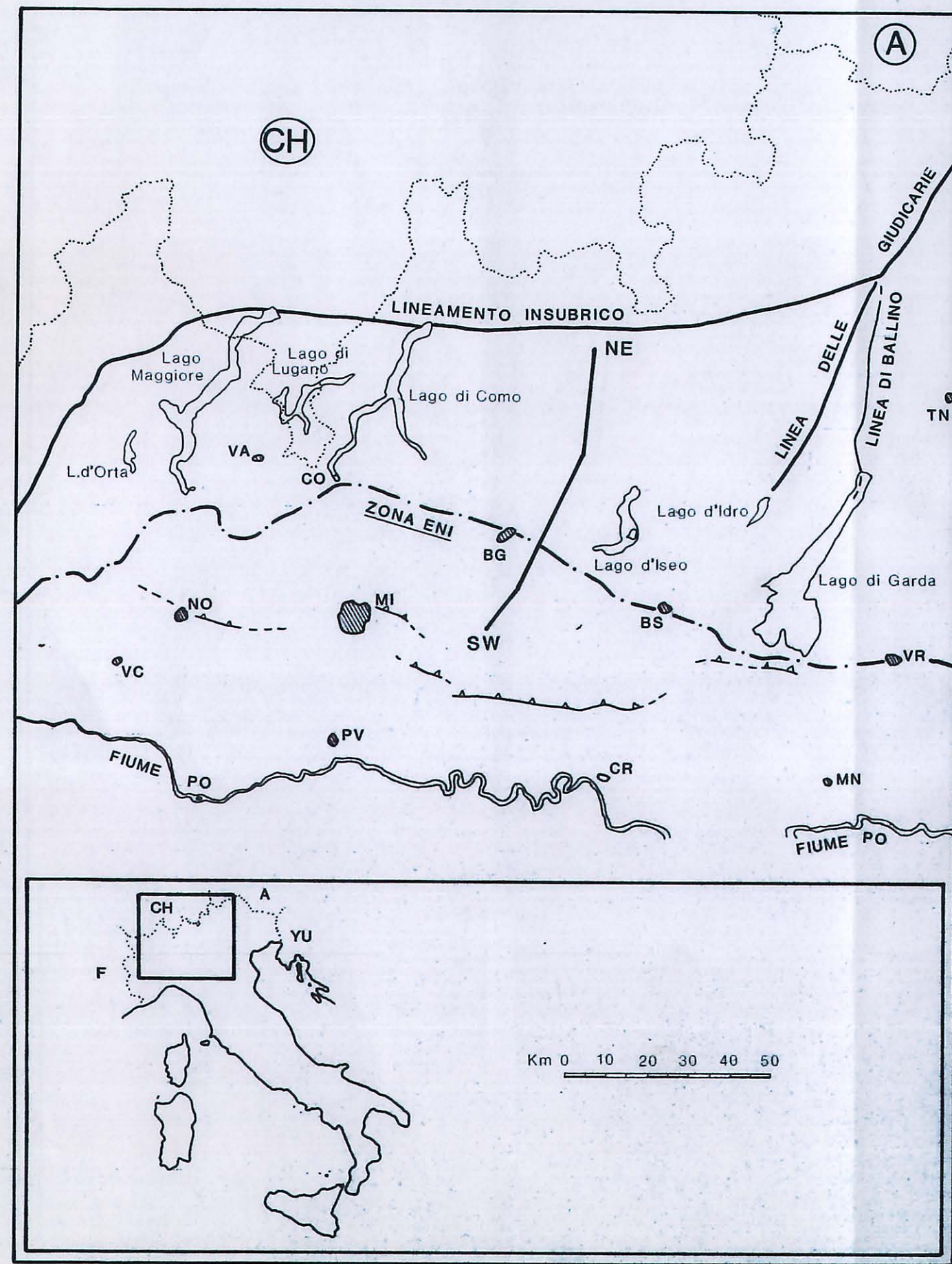


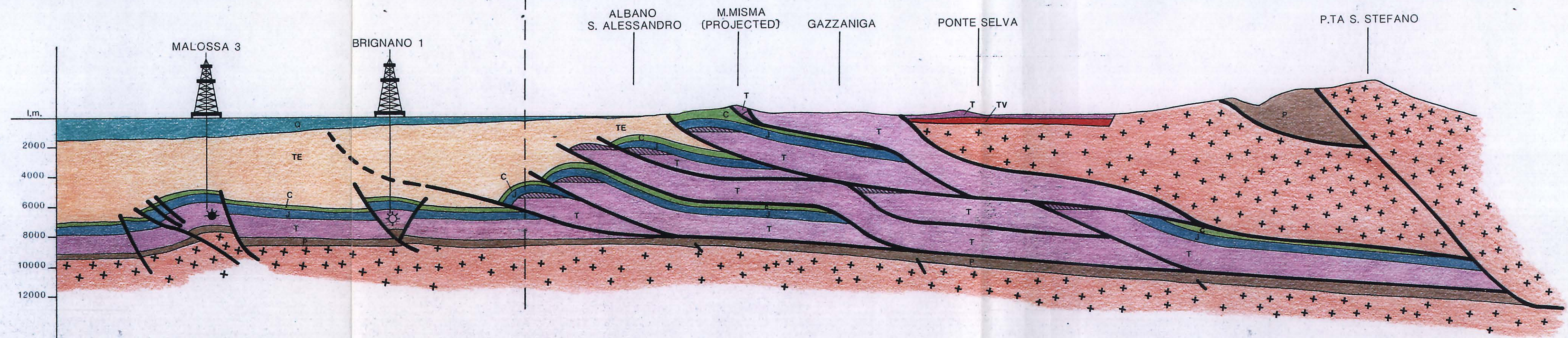
MAPPA INDICE



SW

ZONA ENI

NE








A3300

ZONA: ALPI MERIDIONALI (W. LAGO DI GARDA) Fina Italiana S.p.A. RICERCHE IDROCARBURI

SEZIONE GEOLOGICA SCHEMATICA DELLE ALPI MERIDIONALI (ZONA OROBICA)

Autore A. BARALDI	Disegnatore W. GABELLI	Data 09/1988	Allegato al Rapporto	ALLEGATO 2
Sezione GEOLOGIA	Disegno N° GL-132.23(B)	Scala O iz. 1:150.000 Vert. 1:200.000		

- LEGENDA :**
- QUATERNARIO
 - TERZIARIO
 - CRETACICO
 - GIURASSICO
 - VULCANICO TRIASSICO
 - TRIASSICO
 - PALEOZOICO
 -  PRINCIPALI FAGLIE E SCORRIMENTI
 -  LIMITI LITOSTRATIGRAFICI
 -  OLIO
 -  MANIFESTAZIONI DI GAS
 -  STERILE
 -  TRAPPOLE POSSIBILI
 -  BASAMENTO CRISTALLINO

