

SEZIONE IDROCARBURI

12 GIU. 1976

2420

LINE CL-3(1) sez. Poziz. 43

S.P. 1 to S.P. 43

DATUM PLANE: SEA LEVEL

CL-3(1) S.P.1

CL-3(1) S.P.1

CL-3(1) S.P.15

CL-3(1) S.P.35

CL-3(1) S.P.50

EAST

CL-2 43

C-1024 304

CL-4 86

112

7 106

13 97

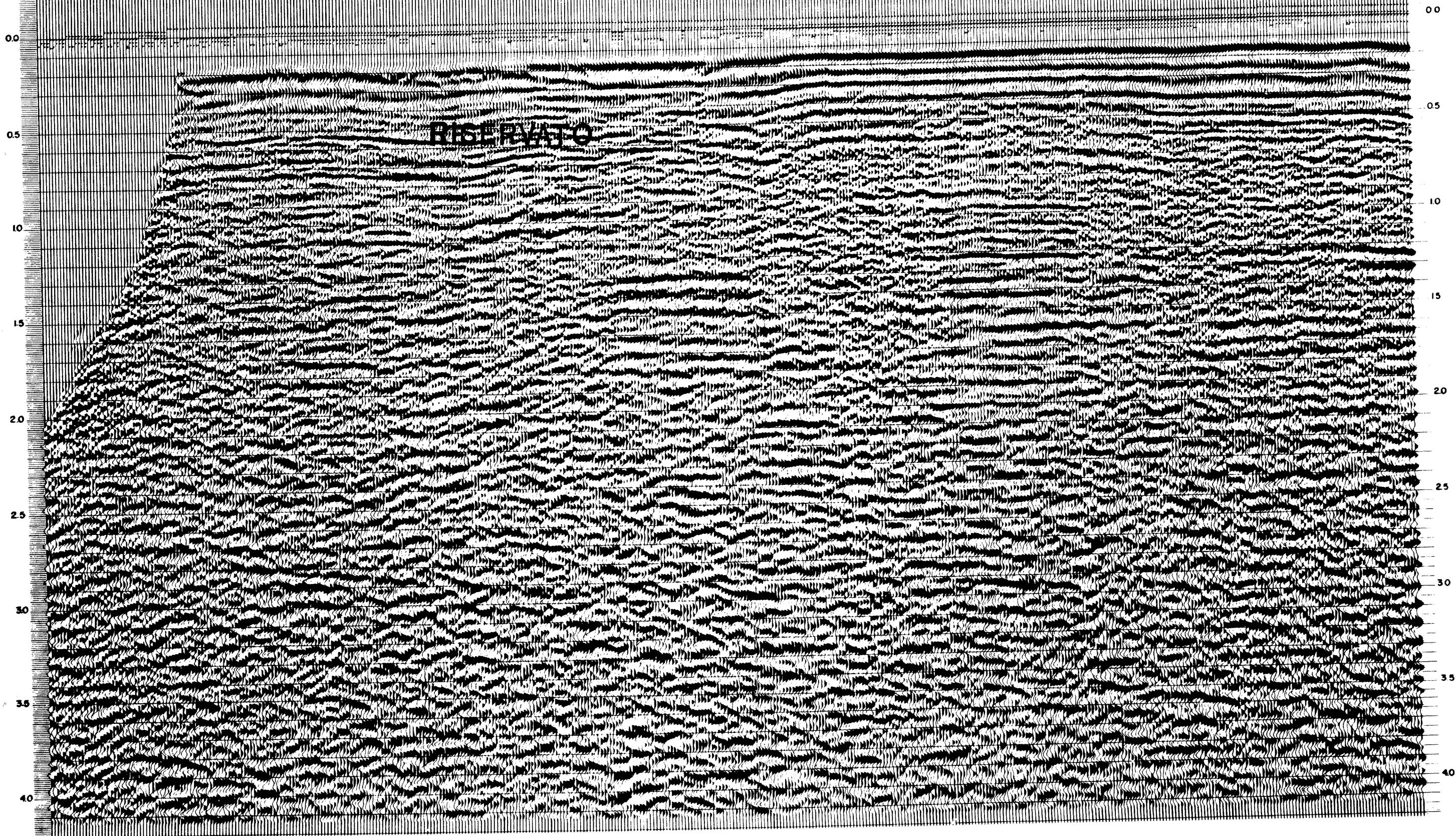
19 88

25 73

31 73

37 75

43 77



<b>AGIP</b> S.p.A. DIREZIONE MINERARIA		AREA <b>LAMPEDUSA</b>	PROSPECT <b>ZONE "C"</b>	<b>WESTERN</b> <b>GEOPHYSICAL</b> <small>DIVISION OF LITTON INDUSTRIES</small>		
<b>RECORDING DATA</b>		<b>PROCESSING INFORMATION</b> SAMPLE RATE 4ms		<b>PROCESSING SEQUENCE</b>	<b>LEGEND</b>	
PARTY NO. 62 ENERGY SOURCE MAXIPULSE FILTER HI/62 Lo/8 CABLE STREAMER-48 GR.-2400m. GEOPHONES 32 PER GROUP TAPERED ARRAY LEAD IN 264 mts.		<b>DECONVOLUTION</b> TIME VAR. MIN. PHASE INVERSE FILTER OPERATOR LENGTH: SEARCH ZONE TIME ZONE 0-40 SEC ITERATIONS 1 <b>BEFORE STACK:</b> AUTO CORR INT 1 ZONE SEARCH ZONE 40 ms. to 180 ms.		1) EDIT & DEBUBBLE 2) DECONV. BEFORE STK 3) 4800% STK 4) DECONV. AFTER STK NONE 5) MULTI-CHANNEL FILTER 6) TV FILTER 7) PLAYBACK VELOCITIES INTERPOLATED BETWEEN POINTS OF APPLICATION CORRECTION TO SEA LEVEL 0 REEL No. 87618 DATE JAN. 1973		INTERSECTION: LINE S.P. → VEL. DERIVED AT LINE S.P. √ S.P. VELOCITY APPLIED: √ VELOCITY ANALYSIS: √ SHOT POINT No.: 100 WATER DEPTH IN METRES 10
AMPLIFIER D.D.S. 777 BINARY GAIN CHARGE SIZE: 8 OZ. GUN DEPTH 12 m. AVG. CABLE DEPTH 13 m. DATE SHOT NOV. 1972		<b>TIME VARIANT FILTER</b> L.C. H.C. TIME ZONE Hz dB/OCT Hz dB/OCT VARIABLE 12 24 50 48 " 10 24 45 48 " 8 24 35 48 " 7 24 30 48 " 5 24 25 48				