



TOCCO CAUDIO  
LINE TX-345-95  
PROJECT 418871  
SP' S 101.5-561.5  
CAMPANIA ITALY

MIGRATION  
NORMAL POLARITY  
VEL. 3300 M/SEC DATUM 400 M

FIELD PARAMETERS  
ACQUIRED FOR: TOCCO CAUDIO PARTY 1  
DATE RECORDED: AUGUST 29 - SEPT. 11, 1995  
INSTRUMENT: SERCEL SN 368 LXU  
NUMBER OF CHANNELS: 240  
FIELD FILTERS: 0 (18) - 178 (72) Hz (48/OCT) NOTCH OUT  
GEOPHONE TYPE: 3325-04-40 10 10  
ENERGY SOURCE: 12 IN-LINE OVER 22.88 M  
HOLE DEPTH: 3-25 M  
SAMPLE INTERVAL: 1-10 KG  
DATA LENGTH: 2 MSEC  
GROUP INTERVAL: 8 SECONDS  
SOURCE INTERVAL: 100 M  
NORMAL SPREAD DIMENSIONS: 298'-SM-12.5M-SP-12.5M-2987.5M

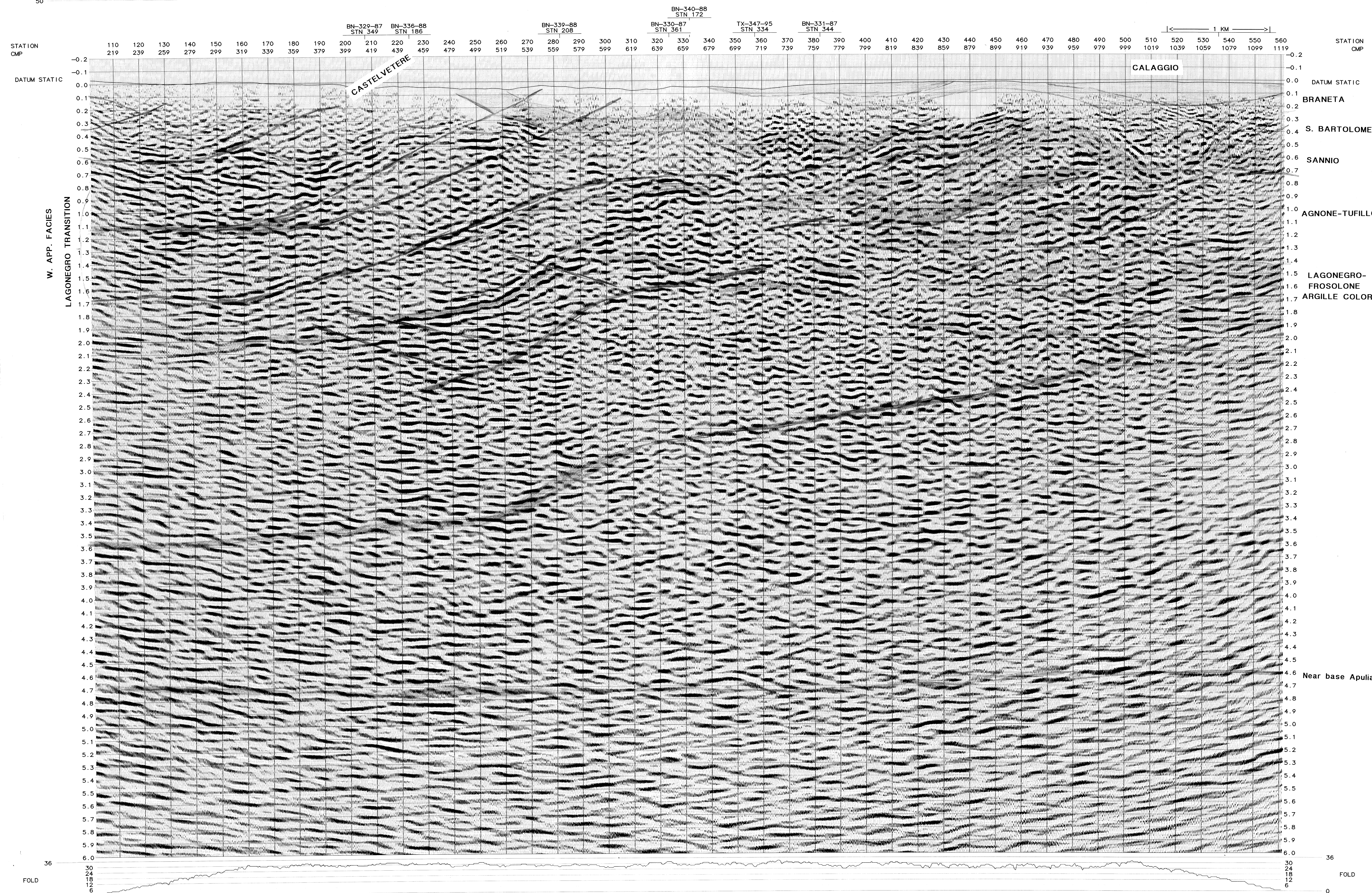
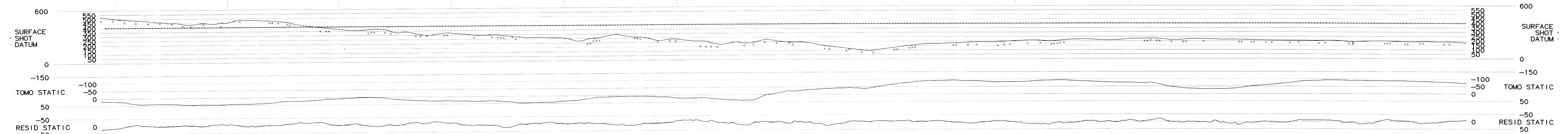
PROCESSING SEQUENCE  
FORMAT CONVERSION FROM SERCEL TRACE SEQUENTIAL SEG-D 8015  
PAD ALL RECORDS TO 240 CHANNELS FOR FIRST BREAK PICK TRANSFER TO DATABASE  
RESAMPLE 2 TO 4 MSEC  
Antialias Filter Used  
GEOMETRY APPLICATION FROM GREEN MOUNTAIN GEOSCRIBE 1  
Field Crew's ASCII File Used as Input to Geoscribe  
TURNING RAY TOMOGRAPHIC NEAR SURFACE INVERSION STATICS COMPUTATION  
From 1st Arrival Times  
Replacement Down to -400 m - Replacement Velocity = 3300 m/sec  
CMP SORT  
TRACE EDITS - STATION KILLS  
GAIN CURVE - 1+2.5  
MINIMUM PHASE PREDICTIVE DECONVOLUTION  
160 msec Operator = 48 msec Predictive Length  
15 Predictive Windows  
OFFSET = 140.00 END = 2223.70  
START = 109.00 END = 422.00  
OFFSET = 4713.18 END = 8201.55  
START = 3012.50 END = 4403.10  
OFFSET = 1200.00 END = 2622.37  
START = 3021.04 END = 4403.10  
OFFSET = 4757.47 END = 8192.69  
500 MSEC AGC  
Center Application Point  
STATICS TO PROCESSING DATUM  
Mean Static Method (No Large Shifts)  
VELOCITY ANALYSIS  
Whole Line CV Stacks - 30 Velocity Panels - Every Other CMP  
SURFACE CONSISTENT RESIDUAL STATICS  
Max Power = 18 msec Maximum Static Shift  
8 Iterations - Convergence Factor 0.05  
Window: 0.2-3.4 sec  
Done on FxDecon Enhanced Data  
CMP TRIM STATICS  
8 msec Maximum Static Shift - From FxDecon Model Section  
Window: 0.2-3.4 sec  
TIME VARIANT FXDECON NOISE SUPPRESSION ON RECORD ORDERED DATA  
15 Trace Design - 7 Trace Filter  
2000 msec Windows - Frequency: 4-50 Hz  
STACK - 30 FOLD  
Square Root Fold Compensation  
FILTER ANALYSIS  
Varied Low and High End  
BANDPASS FILTER  
7/2-45/50 Hz From 0.0 to 3.0 sec  
7/2-45-50 Hz From 3.4 to 8.0 sec  
SCALING  
2000 ms Windows - 1000 ms Overlap  
Center Application Point  
TEXACO'S XW60 WEM MIGRATION  
70% of the Smoothed Stacking Velocities Corrected to Final Datum  
12 ms Depth Step  
TIME VARIANT FXDECON NOISE SUPPRESSION  
21 Trace Design - 7 Trace Filter - 1800 msec Windows



PROCESSED BY: SAM MARCH Q.C. BY: M. SCHWARTZ

DISPLAY PARAMETERS  
Stack Shift = -200  
Traces/centimeters = 10  
Bias Percent = 0  
Gain Set = 0.475  
Gain Constant = 1373.07  
Centimeters/Second = 10  
Clip Limit = 2.5  
RMS Amplitude = 0.728294

Table with 10 columns of CDP data, each containing CDP number, TIME, and VEL. Values range from CDP 212 to 1119.



STATION CMP 110 120 130 140 150 160 170 180 190 200 210 220 230 240 250 260 270 280 290 300 310 320 330 340 350 360 370 380 390 400 410 420 430 440 450 460 470 480 490 500 510 520 530 540 550 560

