



TEXACO

LINE : BN-336-88
 PROJECT NUMBER : BN 418871
 SHOT POINTS : 72 - 339
 AREA : TOCCO CAUDIO (VITULANO)
 LOCATION : ITALY

PROCESS : WAVE EQUATION MIGRATION

RECORDING PARAMETERS

DATE : 14 JUN 1988
 RECORDED BY : G.G.S. 81
 SOURCE : CHAMPREIL
 GAIN : 12 DB
 GAIN INTERFERE : 100 M
 GAIN FILTER : 1.000/2.000
 SAMPLE RATE : 2.0 MS
 RECORD LENGTH : 7.400

PROF. : 1 NE
 CHANNEL : 1 100
 INSTRUMENT : SERCEL 308
 WIRE LENGTH : 1.00 M
 GAIN INTERFERE : 100 M
 GAIN FILTER : 1.000/2.000
 LONG OFFSET : 200.0 M
 LONG OFFSET : 200.0 M
 NO. OF GEOPHONES : 24

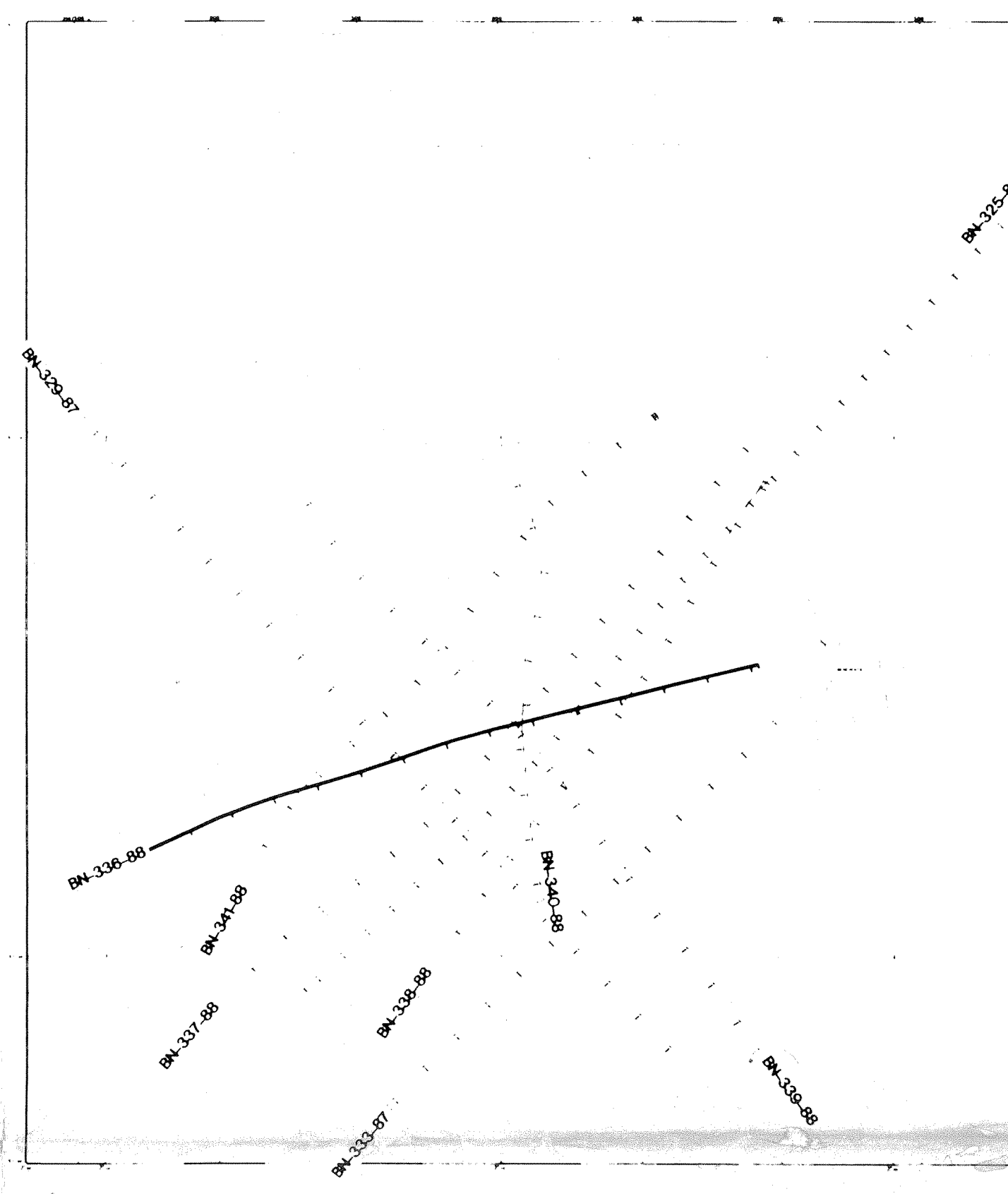
PROCESSING SEQUENCE

1. H FORMATT (FROM SEG 3) & RESAMPLE TO 4 MS
2. SPHERICAL DIVERGENCE AND EXPONENTIAL GAIN
3. EDITING
4. COPY SORT
5. FIELD STATISTICS
 SEPARATING VELOCITIES : 2500 M/S
 CORRECTED TO FLOATING ORIGIN
6. FIRST STUCK EQUALIZATION
7. VELOCITY ANALYSIS
8. NORMAN MOVEOUT CORRECTION
9. SURFACE CONSISTENT RESIDUAL STATISTICS
 STATIST WINDOW : 0 - 3000 MS
10. NON SURFACE CONSISTENT RESIDUAL STATISTICS
 STATIST WINDOW : 0 - 3000 MS
11. CORRECTED TO FIXED ORIGIN = 400 M
12. FLUTE
13. STACK : NOMINALE 30 FOLD
14. FINITE DIFFERENCE MIGRATION
 USING 10% OF VSTK FROM 0.10 S, 600 BELOW 1.5 S
15. FILTERS TIME VARIANT BANDPASS
 TIME OFFSET : 100/400
 LOW : 1000 1000/210 5000/700
 HIGH : 1000 1000/110 4000/300
16. FOC 1000 MS
17. PLT

DISPLAY PARAMETERS

PROF. : 1 NE
 DATE : 14 JUN 1988
 FULL SCALE : 4.000 TRACES PER CM 10.0 CM PER SECOND

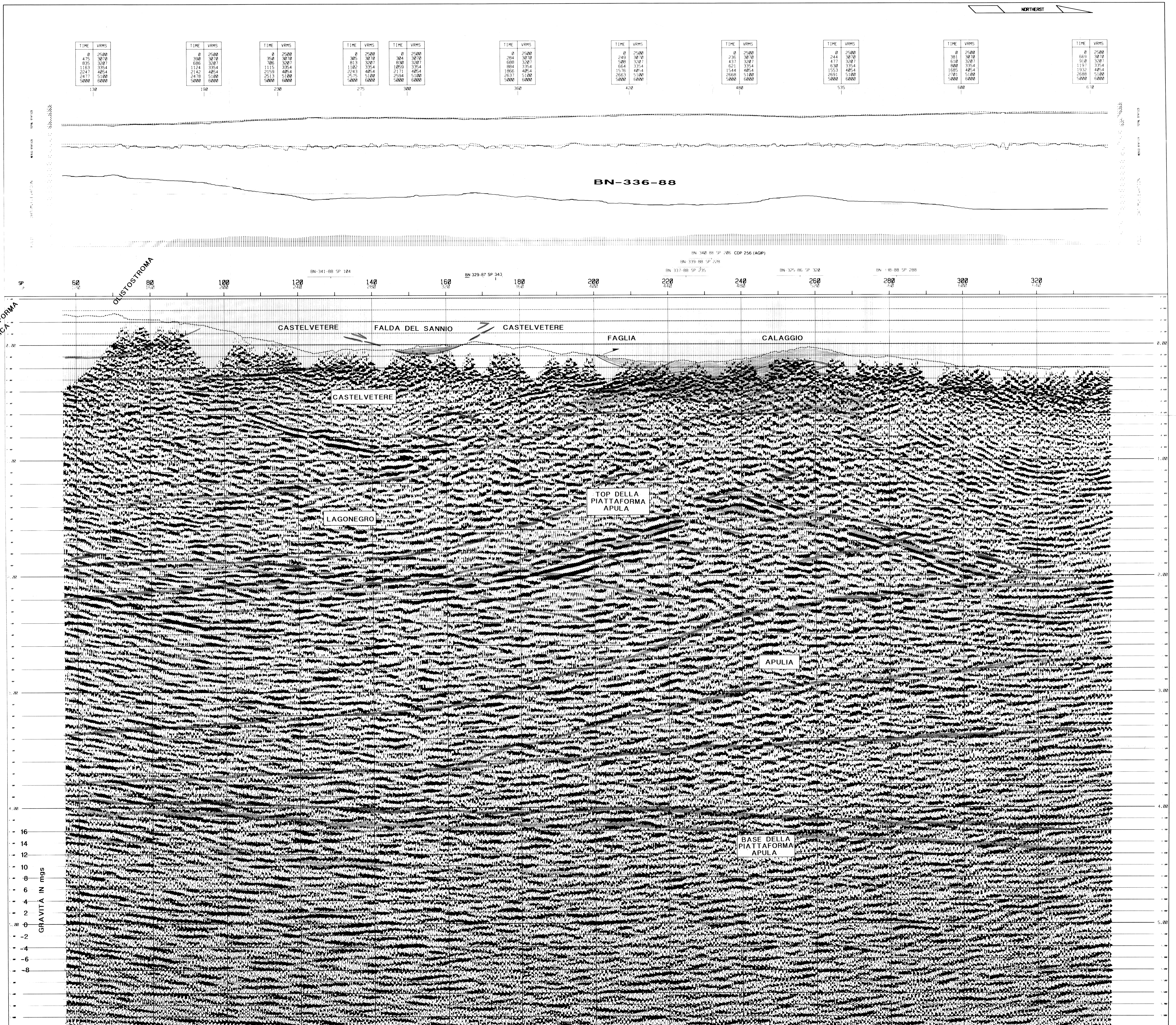
PRODUCED BY
GEOPHYSICAL DEVELOPMENT CORP.
 INDUSTRIAL - 30 X 30



LEGENDA

BEVIZIONE IDROCARBURI
 E GEOLOGICA DI NAPOLI
 14 MAR 1988
 Prov. N. 4363

- Sovraccorrimenti antichi
- Scollamento basale della falda del Sannio (base dei bacini di piggy-back)
- Tettonica fuori sequenza recente
- Sovraccorrimenti recenti della piattaforma apula
- Top della piattaforma apula
- Base della piattaforma apula
- Base del flysch di Castelvetere



TIME	VRMS	TIME	VRMS	TIME	VRMS	TIME	VRMS	TIME	VRMS	TIME	VRMS	TIME	VRMS	TIME	VRMS	TIME	VRMS	TIME	VRMS
0	2500	0	2500	0	2500	0	2500	0	2500	0	2500	0	2500	0	2500	0	2500	0	2500
475	3070	300	3070	300	3070	300	3070	300	3070	300	3070	300	3070	300	3070	300	3070	300	3070
885	3207	600	3207	600	3207	600	3207	600	3207	600	3207	600	3207	600	3207	600	3207	600	3207
1163	3384	1100	3384	1100	3384	1100	3384	1100	3384	1100	3384	1100	3384	1100	3384	1100	3384	1100	3384
1247	4054	1400	4054	1400	4054	1400	4054	1400	4054	1400	4054	1400	4054	1400	4054	1400	4054	1400	4054
2000	5100	2000	5100	2000	5100	2000	5100	2000	5100	2000	5100	2000	5100	2000	5100	2000	5100	2000	5100

CARBONATI DELLA PIATTAFORMA APENNINICA

OLIGOSTROMA

CASTELVETERE

FALDA DEL SANNIO

CASTELVETERE

FAGLIA

CALAGGIO

CASTELVETERE

LAGONEGRO

TOP DELLA PIATTAFORMA APULA

APULIA

BASE DELLA PIATTAFORMA APULA

GRAVITA IN mgs

NORTHEAST