

ALLEGATO 3	DATA GIUGNO 81	DIS. N° 221/5
----------------------	-------------------	------------------

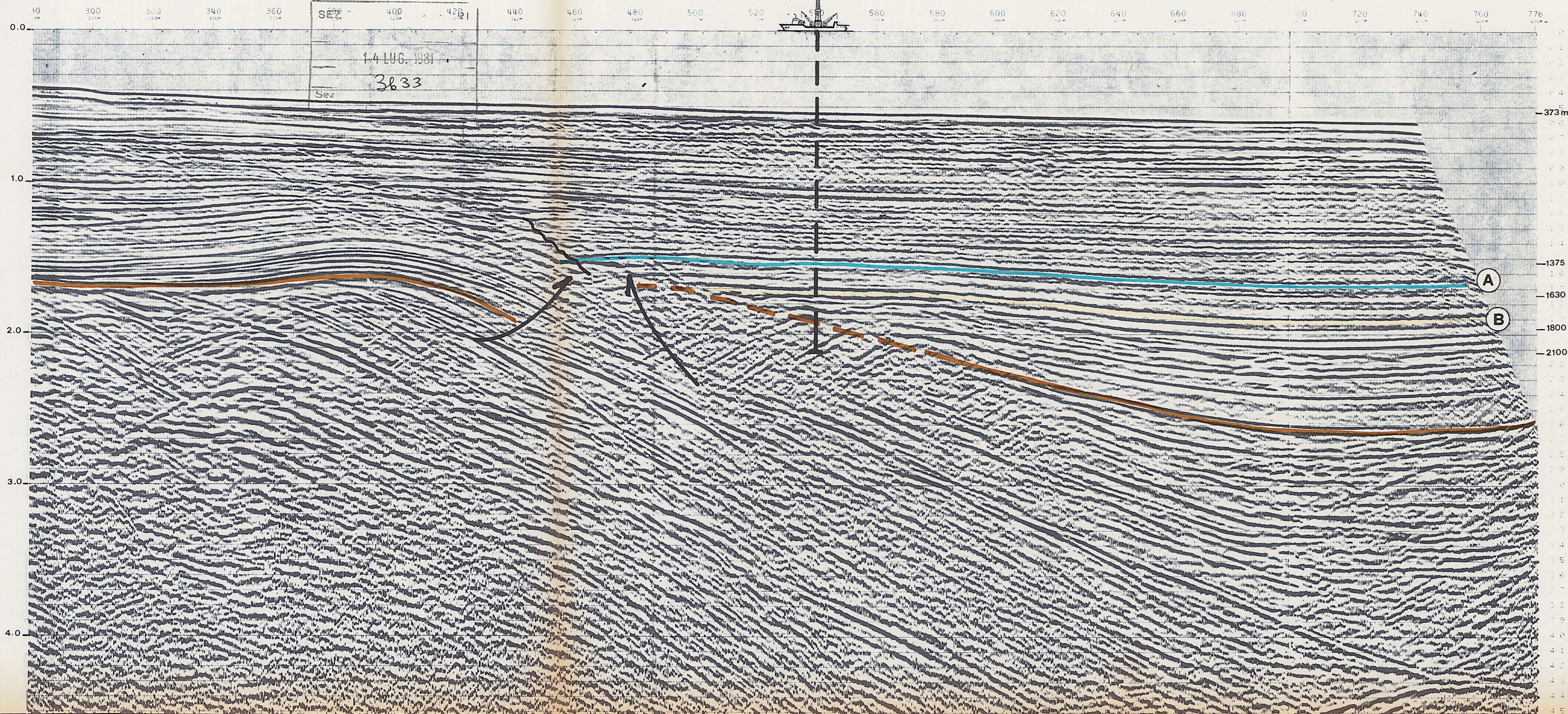


F. R. 5. AG

FRANCA 1

DF80-08

SOUTHWEST



AGIP

WESTERN GEOPHYSICAL
COMPANY OF AMERICA

OFFSHORE
ITALY

RECORDING DATA

RECORDING DATE: 1981

RECORDING TIME: 14:00

RECORDING LOCATION: FRANCA 1

RECORDING INSTRUMENT: AGIP

RECORDING CHANNELS: 1-12

RECORDING GEOPHONE: 12

RECORDING SAMPLE RATE: 1000

RECORDING FILTER: 1000

RECORDING GAIN: 1000

RECORDING SCALE: 1000

RECORDING OFFSET: 1000

RECORDING CORRECTION: 1000

RECORDING ANTI-ALIAS: 1000

RECORDING DECONVOLUTION: 1000

RECORDING MIN. PHASE INVERSE FILTER: 1000

RECORDING WINDOW LENGTH: 1000

RECORDING WINDOW STEP: 1000

RECORDING WINDOW CENTER: 1000

RECORDING WINDOW WIDTH: 1000

RECORDING WINDOW HEIGHT: 1000

RECORDING WINDOW AREA: 1000

RECORDING WINDOW PERIMETER: 1000

RECORDING WINDOW DIAGONAL: 1000

RECORDING WINDOW CIRCUMFERENCE: 1000

RECORDING WINDOW AREA: 1000

RECORDING WINDOW PERIMETER: 1000

RECORDING WINDOW DIAGONAL: 1000

RECORDING WINDOW CIRCUMFERENCE: 1000

RECORDING WINDOW AREA: 1000

RECORDING WINDOW PERIMETER: 1000

RECORDING WINDOW DIAGONAL: 1000

RECORDING WINDOW CIRCUMFERENCE: 1000

RECORDING WINDOW AREA: 1000

RECORDING WINDOW PERIMETER: 1000

RECORDING WINDOW DIAGONAL: 1000

RECORDING WINDOW CIRCUMFERENCE: 1000

RECORDING WINDOW AREA: 1000

RECORDING WINDOW PERIMETER: 1000

RECORDING WINDOW DIAGONAL: 1000

RECORDING WINDOW CIRCUMFERENCE: 1000

RECORDING WINDOW AREA: 1000

RECORDING WINDOW PERIMETER: 1000

RECORDING WINDOW DIAGONAL: 1000

RECORDING WINDOW CIRCUMFERENCE: 1000

RECORDING WINDOW AREA: 1000

PROCESSING SEQUENCE

PROCESSING CHANNELS: 1-12

PROCESSING INSTRUMENT: AGIP

PROCESSING GEOPHONE: 12

PROCESSING SAMPLE RATE: 1000

PROCESSING FILTER: 1000

PROCESSING GAIN: 1000

PROCESSING SCALE: 1000

PROCESSING OFFSET: 1000

PROCESSING CORRECTION: 1000

PROCESSING ANTI-ALIAS: 1000

PROCESSING DECONVOLUTION: 1000

PROCESSING MIN. PHASE INVERSE FILTER: 1000

PROCESSING WINDOW LENGTH: 1000

PROCESSING WINDOW STEP: 1000

PROCESSING WINDOW CENTER: 1000

PROCESSING WINDOW WIDTH: 1000

PROCESSING WINDOW HEIGHT: 1000

PROCESSING WINDOW AREA: 1000

PROCESSING WINDOW PERIMETER: 1000

PROCESSING WINDOW DIAGONAL: 1000

PROCESSING WINDOW CIRCUMFERENCE: 1000

PROCESSING WINDOW AREA: 1000

PROCESSING WINDOW PERIMETER: 1000

PROCESSING WINDOW DIAGONAL: 1000

PROCESSING WINDOW CIRCUMFERENCE: 1000

PROCESSING WINDOW AREA: 1000

PROCESSING WINDOW PERIMETER: 1000

PROCESSING WINDOW DIAGONAL: 1000

PROCESSING WINDOW CIRCUMFERENCE: 1000

PROCESSING WINDOW AREA: 1000

PROCESSING WINDOW PERIMETER: 1000

PROCESSING WINDOW DIAGONAL: 1000

PROCESSING WINDOW CIRCUMFERENCE: 1000

PROCESSING WINDOW AREA: 1000

PROCESSING WINDOW PERIMETER: 1000

PROCESSING WINDOW DIAGONAL: 1000

PROCESSING WINDOW CIRCUMFERENCE: 1000

PROCESSING WINDOW AREA: 1000

PROCESSING WINDOW PERIMETER: 1000

PROCESSING WINDOW DIAGONAL: 1000

PROCESSING WINDOW CIRCUMFERENCE: 1000

PROCESSING WINDOW AREA: 1000

PROCESSING WINDOW PERIMETER: 1000

PROCESSING WINDOW DIAGONAL: 1000

PROCESSING WINDOW CIRCUMFERENCE: 1000

PROCESSING WINDOW AREA: 1000

COMMENTS

DATA WAS INTERPOLATED IN THE HORIZONTAL DIRECTION AT START OF LINE AND END OF LINE.

DATA WAS INTERPOLATED IN THE VERTICAL DIRECTION AT START OF LINE AND END OF LINE.

DATA WAS INTERPOLATED IN THE HORIZONTAL DIRECTION AT START OF LINE AND END OF LINE.

DATA WAS INTERPOLATED IN THE VERTICAL DIRECTION AT START OF LINE AND END OF LINE.

DATA WAS INTERPOLATED IN THE HORIZONTAL DIRECTION AT START OF LINE AND END OF LINE.

DATA WAS INTERPOLATED IN THE VERTICAL DIRECTION AT START OF LINE AND END OF LINE.

DATA WAS INTERPOLATED IN THE HORIZONTAL DIRECTION AT START OF LINE AND END OF LINE.

DATA WAS INTERPOLATED IN THE VERTICAL DIRECTION AT START OF LINE AND END OF LINE.

DATA WAS INTERPOLATED IN THE HORIZONTAL DIRECTION AT START OF LINE AND END OF LINE.

DATA WAS INTERPOLATED IN THE VERTICAL DIRECTION AT START OF LINE AND END OF LINE.

DATA WAS INTERPOLATED IN THE HORIZONTAL DIRECTION AT START OF LINE AND END OF LINE.

DATA WAS INTERPOLATED IN THE VERTICAL DIRECTION AT START OF LINE AND END OF LINE.

DATA WAS INTERPOLATED IN THE HORIZONTAL DIRECTION AT START OF LINE AND END OF LINE.

DATA WAS INTERPOLATED IN THE VERTICAL DIRECTION AT START OF LINE AND END OF LINE.

DATA WAS INTERPOLATED IN THE HORIZONTAL DIRECTION AT START OF LINE AND END OF LINE.

DATA WAS INTERPOLATED IN THE VERTICAL DIRECTION AT START OF LINE AND END OF LINE.

DATA WAS INTERPOLATED IN THE HORIZONTAL DIRECTION AT START OF LINE AND END OF LINE.

DATA WAS INTERPOLATED IN THE VERTICAL DIRECTION AT START OF LINE AND END OF LINE.

DATA WAS INTERPOLATED IN THE HORIZONTAL DIRECTION AT START OF LINE AND END OF LINE.

DATA WAS INTERPOLATED IN THE VERTICAL DIRECTION AT START OF LINE AND END OF LINE.

DATA WAS INTERPOLATED IN THE HORIZONTAL DIRECTION AT START OF LINE AND END OF LINE.

DATA WAS INTERPOLATED IN THE VERTICAL DIRECTION AT START OF LINE AND END OF LINE.

DATA WAS INTERPOLATED IN THE HORIZONTAL DIRECTION AT START OF LINE AND END OF LINE.

DATA WAS INTERPOLATED IN THE VERTICAL DIRECTION AT START OF LINE AND END OF LINE.

DATA WAS INTERPOLATED IN THE HORIZONTAL DIRECTION AT START OF LINE AND END OF LINE.

DATA WAS INTERPOLATED IN THE VERTICAL DIRECTION AT START OF LINE AND END OF LINE.

LINE LOCATION MAP

