

UNION TEXAS
ADRIATIC, INC.
PERMESSO: SERRA
CORNETA, ITALIA
LINE MS-6
SP 1030-1346
FINAL STACK

FIELD PARAMETERS

Date Recorded: AUGUST 1975
Source Type: DYNAMITE
Sample Rate: 4 MS
Record End Time: 6 SECONDS
Near Offset: 50 METRES
Long Offset: 1200 METRES
Gain Mode: 1FP
Preamp Gain: 36 DB
Low Cut Filter: 8 HZ
Low Cut Slope: 24 DB/OCTAVE
High Cut Filter: 128 HZ
High Cut Slope: 24 DB/OCTAVE
Notch Filter: OUT
Instruments: SERCEL SN328
Format: 21 TRACK
Number Data Chans: 48
Number Aux Chans: 5

PROCESSING SEQUENCE

PROCESSED BY MAGNOLIA ENERGY SERVICES

REFORMAT TO SEG-Y
RELATIVE AMPLITUDE CORRECTION
SURFACE CONSISTENT DECONVOLUTION
SINGLE WINDOW DESIGN
200 MS OPERATOR
24 MS PREDICTIVE GAP
SPECTRAL WHITENING
ELEVATION STATICS
DURATION: 500 METRES
REPLACEMENT VELOCITY: 2000 M/S
VELOCITY ANALYSIS
ONE PER KILOMETRE
SURFACE CONSISTENT RESIDUAL STATICS
VELOCITY ANALYSIS
ONE PER KILOMETRE
SURFACE CONSISTENT RESIDUAL STATICS
DIP MOVEOUT CORRECTION
VELOCITY ANALYSIS
ONE PER KILOMETRE
NORMAL MOVEOUT CORRECTION
MUTE
CDP TRIM STATICS
CMP STACK
T.V. FILTER
TRACE EQUALIZATION
FXDECON

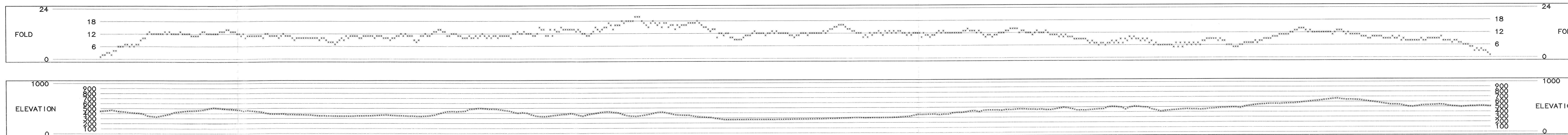
MAGNOLIA ENERGY SERVICES
10333 Richmond Ave., Suite 200
Houston, Texas 77042



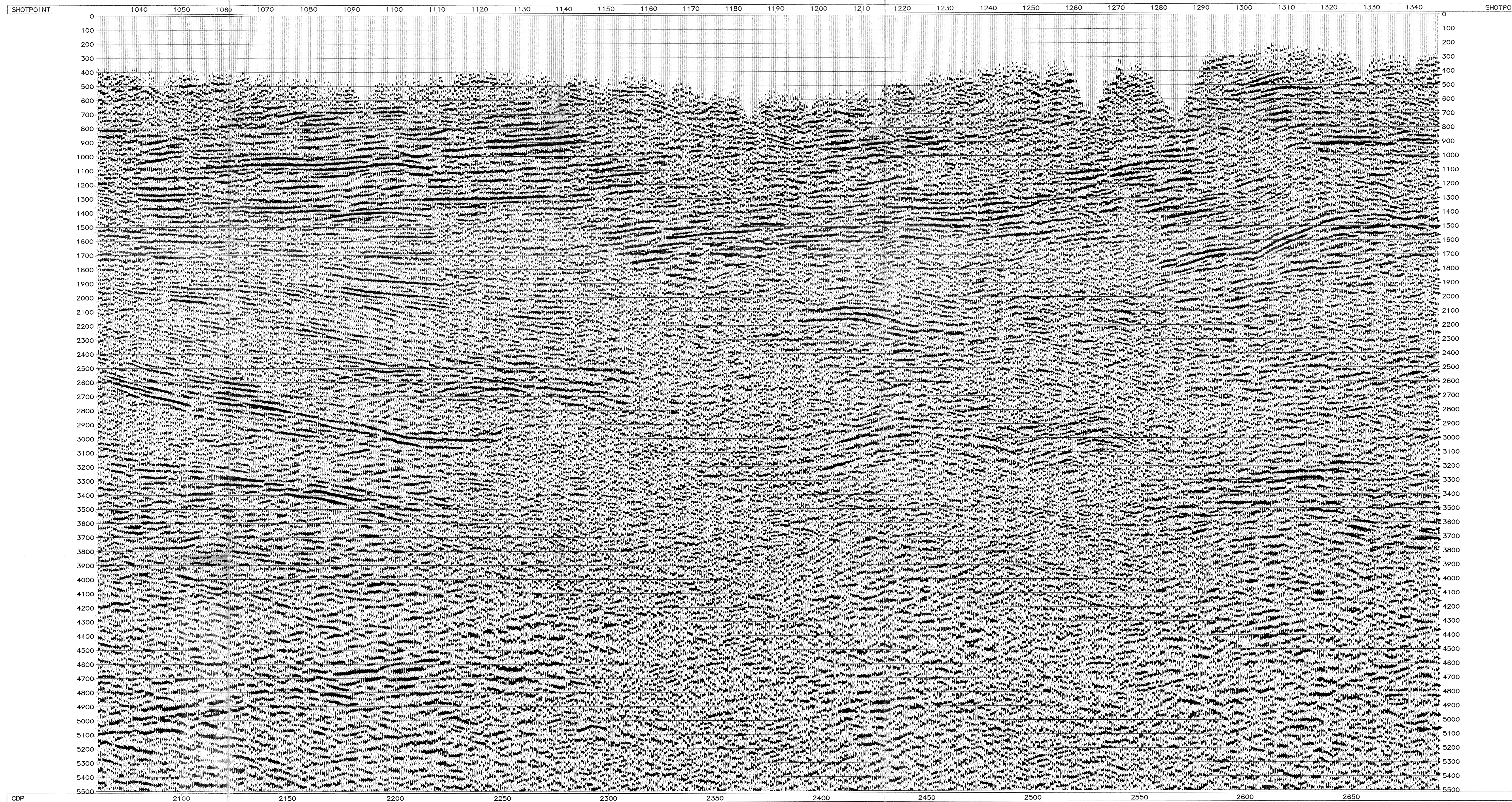
DISPLAY PARAMETERS

Fri Aug 25 10:09:55 1995
Traces/Inches = 17
Scale Percent = 0
Gain Set = 0.65
Gain Constant = 775.36
Static Shift = 0
Inches/Second = 3.937
Clip Limit = 2
RMS Amplitude = 1.28972

ADVANCE ProMAX



CDP 2094 TIME VEL 8 1994 255 2253 434 2471 655 2616 869 2711 913 2711 1129 3128 1453 3258 1567 3356 2404 3745 3202 4198 4709 4563 5995 5000	CDP 2130 TIME VEL 0 2282 107 2282 236 2341 324 2353 448 2423 595 2512 745 2512 892 2613 1078 3018 1244 3148 1397 3198 1768 3356 2245 3356 2977 3742 5989 5000	CDP 2174 TIME VEL 0 1994 248 2167 324 2253 448 2342 595 2431 745 2512 892 2613 1078 3018 1244 3148 1397 3198 1768 3356 2245 3356 2977 3742 5989 5000	CDP 2210 TIME VEL 0 1994 215 2082 336 2167 434 2253 595 2342 745 2431 892 2512 1078 2918 1244 3048 1397 3098 1768 3256 2245 3256 2977 3642 5989 5000	CDP 2250 TIME VEL 0 1994 218 2167 336 2253 434 2342 595 2431 745 2512 892 2613 1078 3018 1244 3148 1397 3198 1768 3356 2245 3356 2977 3742 5989 5000	CDP 2290 TIME VEL 0 1994 218 2167 336 2253 434 2342 595 2431 745 2512 892 2613 1078 3018 1244 3148 1397 3198 1768 3356 2245 3356 2977 3742 5989 5000	CDP 2330 TIME VEL 0 1994 218 2167 336 2253 434 2342 595 2431 745 2512 892 2613 1078 3018 1244 3148 1397 3198 1768 3356 2245 3356 2977 3742 5989 5000	CDP 2370 TIME VEL 0 1994 218 2167 336 2253 434 2342 595 2431 745 2512 892 2613 1078 3018 1244 3148 1397 3198 1768 3356 2245 3356 2977 3742 5989 5000	CDP 2410 TIME VEL 0 1994 218 2167 336 2253 434 2342 595 2431 745 2512 892 2613 1078 3018 1244 3148 1397 3198 1768 3356 2245 3356 2977 3742 5989 5000	CDP 2450 TIME VEL 0 1994 218 2167 336 2253 434 2342 595 2431 745 2512 892 2613 1078 3018 1244 3148 1397 3198 1768 3356 2245 3356 2977 3742 5989 5000	CDP 2490 TIME VEL 0 1994 218 2167 336 2253 434 2342 595 2431 745 2512 892 2613 1078 3018 1244 3148 1397 3198 1768 3356 2245 3356 2977 3742 5989 5000	CDP 2530 TIME VEL 0 1994 218 2167 336 2253 434 2342 595 2431 745 2512 892 2613 1078 3018 1244 3148 1397 3198 1768 3356 2245 3356 2977 3742 5989 5000	CDP 2570 TIME VEL 0 1994 218 2167 336 2253 434 2342 595 2431 745 2512 892 2613 1078 3018 1244 3148 1397 3198 1768 3356 2245 3356 2977 3742 5989 5000	CDP 2610 TIME VEL 0 1994 218 2167 336 2253 434 2342 595 2431 745 2512 892 2613 1078 3018 1244 3148 1397 3198 1768 3356 2245 3356 2977 3742 5989 5000	CDP 2650 TIME VEL 0 1994 218 2167 336 2253 434 2342 595 2431 745 2512 892 2613 1078 3018 1244 3148 1397 3198 1768 3356 2245 3356 2977 3742 5989 5000
---	---	---	---	---	---	---	---	---	---	---	---	---	---	---



UNION TEXAS
ADRIATIC, INC.
PERMESSO: SERRA
CORNETA, ITALIA
LINE MS-6
SP 1030-1346
FINAL STACK

FIELD PARAMETERS

Date Recorded: AUGUST 1975
Source Type: DYNAMITE
Sample Rate: 4 MS
Record End Time: 6 SECONDS
Near Offset: 50 METRES
Long Offset: 1200 METRES
Gain Mode: 1FP
Preamp Gain: 36 DB
Low Cut Filter: 8 HZ
Low Cut Slope: 24 DB/OCTAVE
High Cut Filter: 128 HZ
High Cut Slope: 24 DB/OCTAVE
Notch Filter: OUT
Instruments: SERCEL SN328
Format: 21 TRACK
Number Data Chans: 48
Number Aux Chans: 5

BEZIONE IDROCARBURI
E GEOTERMIA
- 1 SET 1995
Prof. N. 6188

PROCESSING SEQUENCE

PROCESSED BY MAGNOLIA ENERGY SERVICES

REFORMAT TO SEG-Y
RELATIVE AMPLITUDE CORRECTION
SURFACE CONSISTENT DECONVOLUTION
SINGLE WINDOW DESIGN
200 MS OPERATOR
24 MS PREDICTIVE GAP
SPECTRAL WHITENING
ELEVATION STATICS
DURATION: 500 METRES
REPLACEMENT VELOCITY: 2000 M/S
VELOCITY ANALYSIS
ONE PER KILOMETRE
SURFACE CONSISTENT RESIDUAL STATICS
VELOCITY ANALYSIS
ONE PER KILOMETRE
SURFACE CONSISTENT RESIDUAL STATICS
DIP MOVEOUT CORRECTION
VELOCITY ANALYSIS
ONE PER KILOMETRE
NORMAL MOVEOUT CORRECTION
MUTE
CDP TRIM STATICS
CMP STACK
T.V. FILTER
TRACE EQUALIZATION
FXDECON

MAGNOLIA ENERGY SERVICES
10333 Richmond Ave., Suite 200
Houston, Texas 77042



DISPLAY PARAMETERS

Fri Aug 25 10:09:55 1995
Traces/Inches = 17
Scale Percent = 0
Gain Set = 0.65
Gain Constant = 775.36
Static Shift = 0
Inches/Second = 3.937
Clip Limit = 2
RMS Amplitude = 1.28972

ADVANCE ProMAX