

UNION TEXAS ADRIATIC, INC. PERMESSO: SERRA CORNETA, ITALIA LINE MS-3 SP 91-345 FINAL STACK

FIELD PARAMETERS

Date Recorded.....AUGUST 1975

Source Type.....DYNAMITE

Record End Time.....6 SECONDS

Near Offset.....50 METRES

Long Offset.....1200 METRES

Gain Mode.....IFP

Preamp Gain.....36 DB.

Low Cut Filter.....8 HZ.

Low Cut Slope.....24 DB/OCTAVE

High Cut Filter.....128 HZ.

High Cut Slope.....24 DB/OCTAVE

Notch Filter.....OUT

Instruments.....SERCEL SN328

Format.....21 TRACK

Number Data Chans....48

Number Aux Chans....5

PROCESSING SEQUENCE

PROCESSED BY MAGNOLIA ENERGY SERVICES

REFORMAT TO SEG-Y

RELATIVE AMPLITUDE CORRECTION

SURFACE CONSISTENT DECONVOLUTION

SINGLE WINDOW DESIGN

200 MS. OPERATOR

24 MS. PREDICTIVE GAP

SPECTRAL WHITENING

ELEVATION STATICS

DUTUM=800 METRES

REPLACEMENT VELOCITY=2000 M/S

VELOCITY ANALYSIS

ONE PER KILOMETRE

SURFACE CONSISTENT RESIDUAL STATICS

VELOCITY ANALYSIS

ONE PER KILOMETRE

SURFACE CONSISTENT RESIDUAL STATICS

DIP MOVEOUT CORRECTION

VELOCITY ANALYSIS

ONE PER KILOMETRE

NORMAL MOVEOUT CORRECTION

MUTE

CDP TRIM STATICS

CDP STACK

T.V. FILTER

TRACE EQUALIZATION

FIXDECON

MAGNOLIA ENERGY SERVICES

10333 Richmond Ave., Suite 200

Houston, Texas 77042

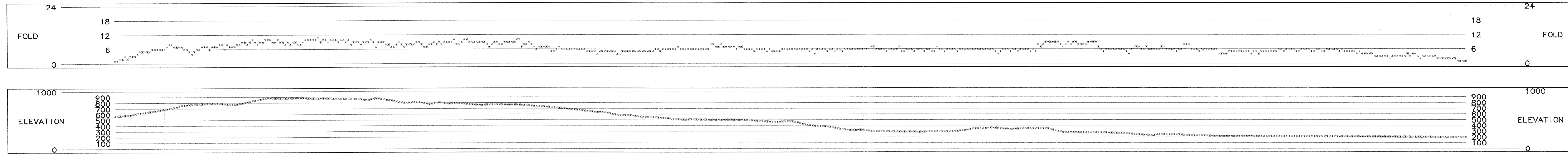


DISPLAY PARAMETERS

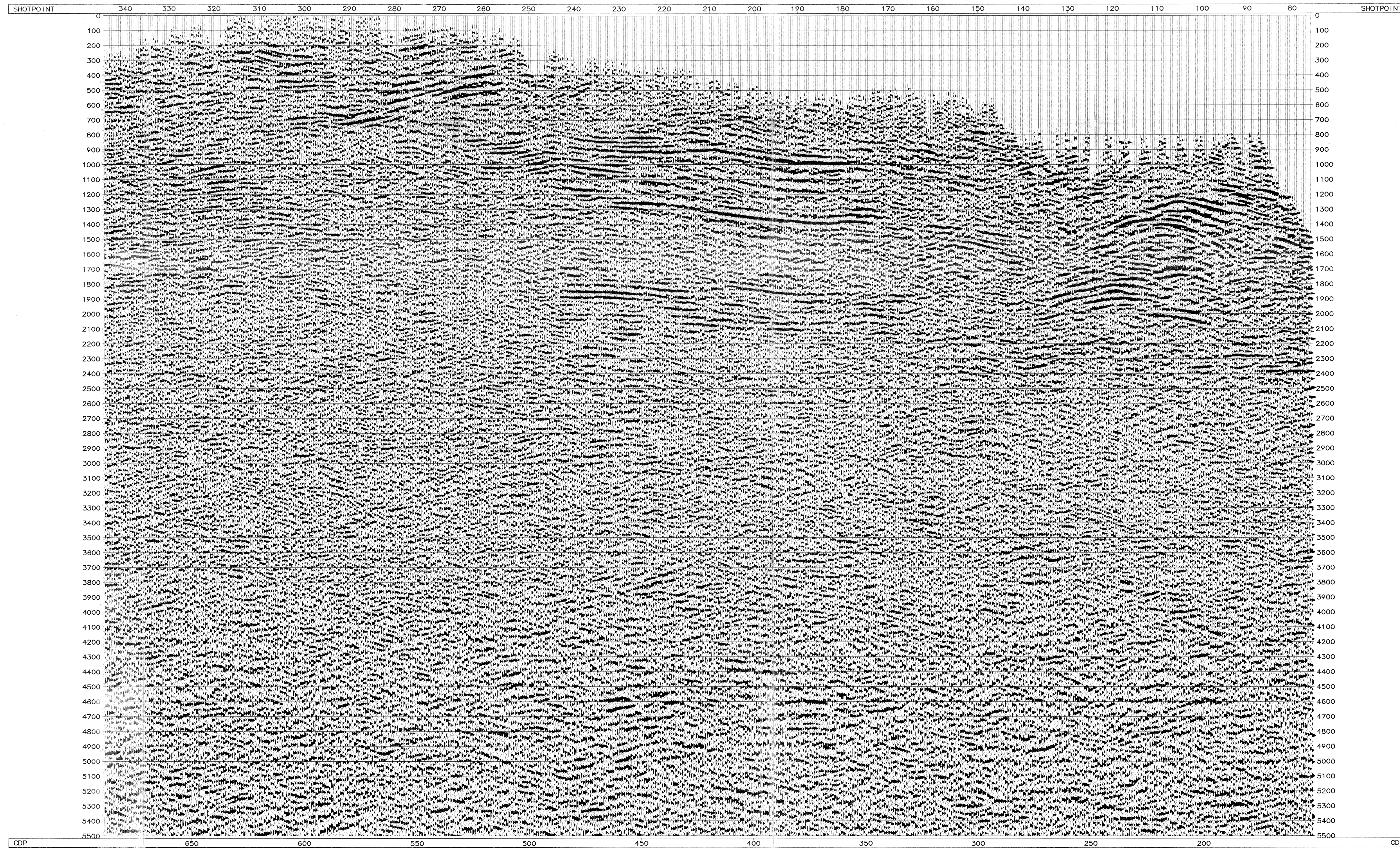
Fri Aug 25 10:06:10 1995
 Traces/Inches = 17
 Bias Percent = 0
 Gain Set = 0.65
 Gain Constant = 756.73

Static Shift = 0
 Inches/Second = 3.937
 Clip Limit = 2
 RMS Amplitude = 1.32148

ADVANCE ProMAX



| CDP | TIME | VEL | CDP | TIME | VEL | CDP | TIME | VEL | CDP | TIME | VEL | CDP | TIME | VEL | CDP | TIME | VEL | CDP | TIME | VEL |
|-----|------|------|-----|------|------|-----|------|------|-----|------|------|-----|------|------|-----|------|------|-----|------|------|
| 270 | 0 | 1836 | 270 | 2 | 1836 | 270 | 4 | 1836 | 270 | 6 | 1836 | 270 | 8 | 1836 | 270 | 10 | 1836 | 270 | 12 | 1836 |
| 270 | 1 | 1836 | 270 | 3 | 1836 | 270 | 5 | 1836 | 270 | 7 | 1836 | 270 | 9 | 1836 | 270 | 11 | 1836 | 270 | 13 | 1836 |
| 270 | 2 | 1836 | 270 | 4 | 1836 | 270 | 6 | 1836 | 270 | 8 | 1836 | 270 | 10 | 1836 | 270 | 12 | 1836 | 270 | 14 | 1836 |
| 270 | 3 | 1836 | 270 | 5 | 1836 | 270 | 7 | 1836 | 270 | 9 | 1836 | 270 | 11 | 1836 | 270 | 13 | 1836 | 270 | 15 | 1836 |
| 270 | 4 | 1836 | 270 | 6 | 1836 | 270 | 8 | 1836 | 270 | 10 | 1836 | 270 | 12 | 1836 | 270 | 14 | 1836 | 270 | 16 | 1836 |
| 270 | 5 | 1836 | 270 | 7 | 1836 | 270 | 9 | 1836 | 270 | 11 | 1836 | 270 | 13 | 1836 | 270 | 15 | 1836 | 270 | 17 | 1836 |
| 270 | 6 | 1836 | 270 | 8 | 1836 | 270 | 10 | 1836 | 270 | 12 | 1836 | 270 | 14 | 1836 | 270 | 16 | 1836 | 270 | 18 | 1836 |
| 270 | 7 | 1836 | 270 | 9 | 1836 | 270 | 11 | 1836 | 270 | 13 | 1836 | 270 | 15 | 1836 | 270 | 17 | 1836 | 270 | 19 | 1836 |
| 270 | 8 | 1836 | 270 | 10 | 1836 | 270 | 12 | 1836 | 270 | 14 | 1836 | 270 | 16 | 1836 | 270 | 18 | 1836 | 270 | 20 | 1836 |
| 270 | 9 | 1836 | 270 | 11 | 1836 | 270 | 13 | 1836 | 270 | 15 | 1836 | 270 | 17 | 1836 | 270 | 19 | 1836 | 270 | 21 | 1836 |
| 270 | 10 | 1836 | 270 | 12 | 1836 | 270 | 14 | 1836 | 270 | 16 | 1836 | 270 | 18 | 1836 | 270 | 20 | 1836 | 270 | 22 | 1836 |
| 270 | 11 | 1836 | 270 | 13 | 1836 | 270 | 15 | 1836 | 270 | 17 | 1836 | 270 | 19 | 1836 | 270 | 21 | 1836 | 270 | 23 | 1836 |
| 270 | 12 | 1836 | 270 | 14 | 1836 | 270 | 16 | 1836 | 270 | 18 | 1836 | 270 | 20 | 1836 | 270 | 22 | 1836 | 270 | 24 | 1836 |



UNION TEXAS ADRIATIC, INC. PERMESSO: SERRA CORNETA, ITALIA LINE MS-3 SP 91-345 FINAL STACK

FIELD PARAMETERS

Date Recorded.....AUGUST 1975

Source Type.....DYNAMITE

Record End Time.....6 SECONDS

Near Offset.....50 METRES

Long Offset.....1200 METRES

Gain Mode.....IFP

Preamp Gain.....36 DB.

Low Cut Filter.....8 HZ.

Low Cut Slope.....24 DB/OCTAVE

High Cut Filter.....128 HZ.

High Cut Slope.....24 DB/OCTAVE

Notch Filter.....OUT

Instruments.....SERCEL SN328

Format.....21 TRACK

Number Data Chans....48

Number Aux Chans....5

PROCESSING SEQUENCE

PROCESSED BY MAGNOLIA ENERGY SERVICES

REFORMAT TO SEG-Y

RELATIVE AMPLITUDE CORRECTION

SURFACE CONSISTENT DECONVOLUTION

SINGLE WINDOW DESIGN

200 MS. OPERATOR

24 MS. PREDICTIVE GAP

SPECTRAL WHITENING

ELEVATION STATICS

DUTUM=800 METRES

REPLACEMENT VELOCITY=2000 M/S

VELOCITY ANALYSIS

ONE PER KILOMETRE

SURFACE CONSISTENT RESIDUAL STATICS

VELOCITY ANALYSIS

ONE PER KILOMETRE

SURFACE CONSISTENT RESIDUAL STATICS

DIP MOVEOUT CORRECTION

VELOCITY ANALYSIS

ONE PER KILOMETRE

NORMAL MOVEOUT CORRECTION

MUTE

CDP TRIM STATICS

CDP STACK

T.V. FILTER

TRACE EQUALIZATION

FIXDECON

MAGNOLIA ENERGY SERVICES

10333 Richmond Ave., Suite 200

Houston, Texas 77042



DISPLAY PARAMETERS

Fri Aug 25 10:06:11 1995
 Traces/Inches = 17
 Bias Percent = 0
 Gain Set = 0.65
 Gain Constant = 756.73

Static Shift = 0
 Inches/Second = 3.937
 Clip Limit = 2
 RMS Amplitude = 1.32148

ADVANCE ProMAX

BEZIONE IDRICARIBURI
 E GEFERRE...
 - 1 SEP 1975
 Prot. N. 6480