

UNION TEXAS
ADRIATIC, INC.
PERMESSO: SERRA
CORNETA, ITALIA
LINE MS-3
SP 91-345
MIGRATION

FIELD PARAMETERS

Date Recorded: AUGUST 1975
Source Type: DYNAMITE
Sample Rate: 4 MS
Record End Time: 6 SECONDS
Near Offset: 50 METRES
Long Offset: 1200 METRES
Gain Mode: LFP
Preamp Gain: 36 DB
Low Cut Filter: 8 HZ
Low Cut Slope: 24 DB/OCTAVE
High Cut Filter: 128 HZ
High Cut Slope: 24 DB/OCTAVE
Notch Filter: OUT
Instruments: SERCEL SN328
Format: 21 TRACK
Number Data Chans: 48
Number Aux Chans: 5

SEZIONE IDROCARBURI
E GEOTERMIA DI NAPOLI
- 1 SET 1995
Prof. N. *Giulio*

PROCESSING SEQUENCE

PROCESSED BY MAGNOLIA ENERGY SERVICES

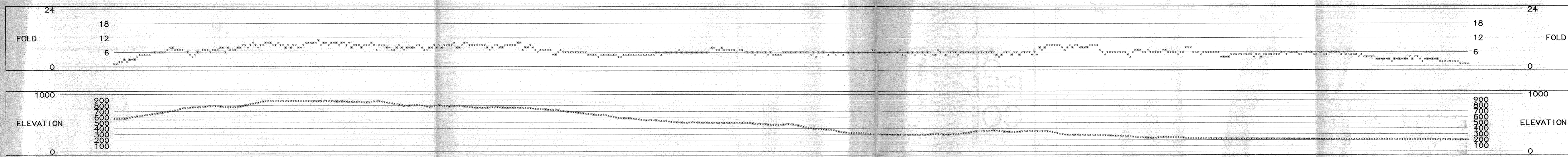
REFORMAT TO SEG Y
RELATIVE AMPLITUDE CORRECTION
SURFACE CONSISTENT DECONVOLUTION
SINGLE WINDOW DESIGN
500 MS OPERATOR
24 MS PREDICTIVE GAP
SPECTRAL WHITENING
ELEVATION STATICS
DATHUM= 800 METRES
REPLACEMENT VELOCITY=2000 M/S
VELOCITY ANALYSIS
ONE PER KILOMETRE
SURFACE CONSISTENT RESIDUAL STATICS
VELOCITY ANALYSIS
ONE PER KILOMETRE
SURFACE CONSISTENT RESIDUAL STATICS
DIP MOVEOUT CORRECTION
VELOCITY ANALYSIS
ONE PER KILOMETRE
NORMAL MOVEOUT CORRECTION
MUTE
CDP TRIM STATICS
CMP STACK
MIGRATION
T.V. FILTER
TRACE EQUALIZATION
FXDECON

MAGNOLIA ENERGY SERVICES
10333 Richmond Ave., Suite 200
Houston, Texas 77042

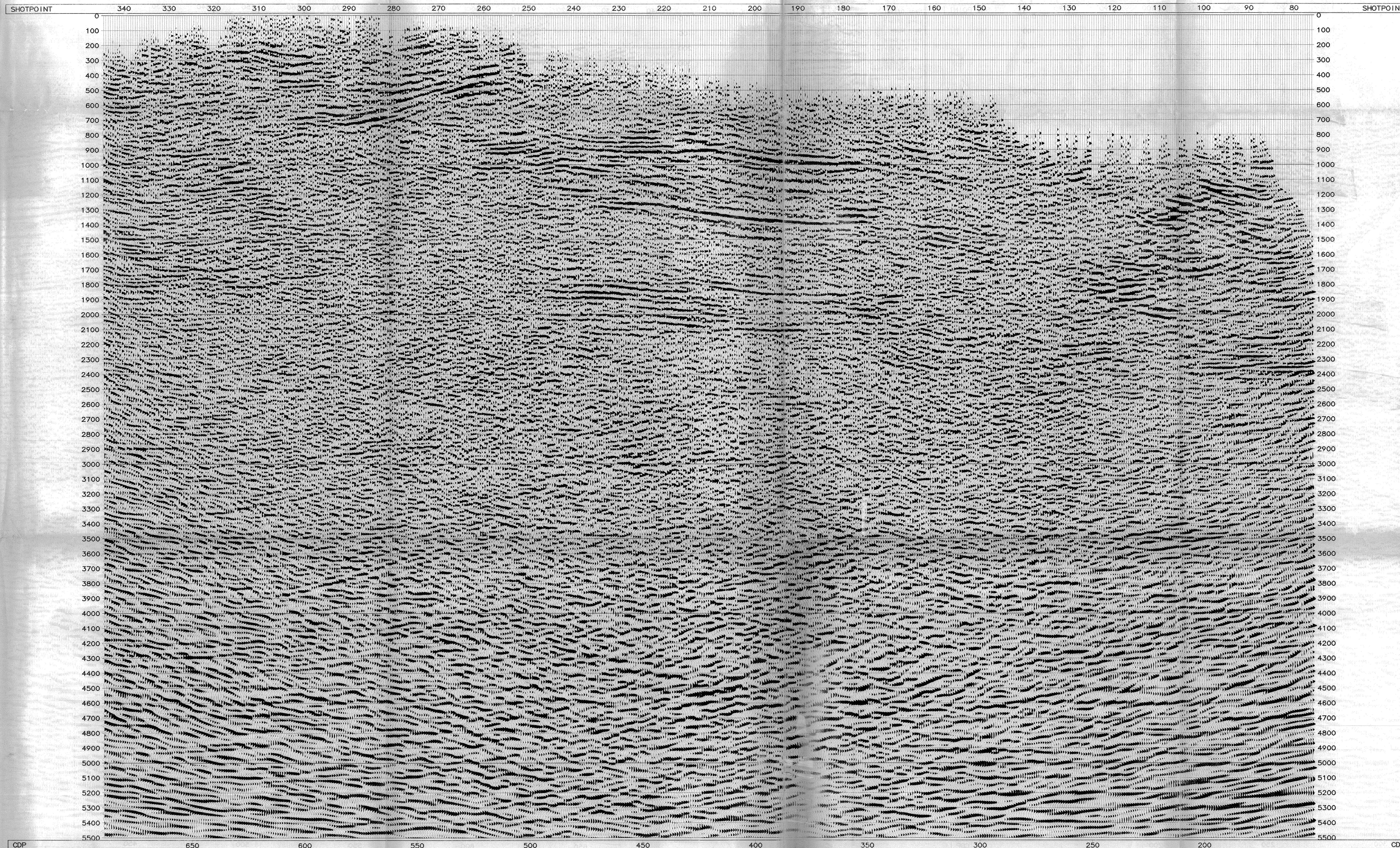
DISPLAY PARAMETERS

Fri Aug 25 16:00:01 1995 Static Shift = 0
Traces/Inches = 17 Inches/Second = 3.937
Bias Percent = 0.65 Clip Limit = 2
Gain Set = 783.969 RMS Amplitude = 1.27556

ADVANCE PROMAX



CDP	TIME	VEL	CDP	TIME	VEL	CDP	TIME	VEL	CDP	TIME	VEL	CDP	TIME	VEL	CDP	TIME	VEL	CDP	TIME	VEL
574	1	1834	574	1	1834	574	1	1834	574	1	1834	574	1	1834	574	1	1834	574	1	1834
574	2	1834	574	2	1834	574	2	1834	574	2	1834	574	2	1834	574	2	1834	574	2	1834
574	3	1834	574	3	1834	574	3	1834	574	3	1834	574	3	1834	574	3	1834	574	3	1834
574	4	1834	574	4	1834	574	4	1834	574	4	1834	574	4	1834	574	4	1834	574	4	1834
574	5	1834	574	5	1834	574	5	1834	574	5	1834	574	5	1834	574	5	1834	574	5	1834
574	6	1834	574	6	1834	574	6	1834	574	6	1834	574	6	1834	574	6	1834	574	6	1834
574	7	1834	574	7	1834	574	7	1834	574	7	1834	574	7	1834	574	7	1834	574	7	1834
574	8	1834	574	8	1834	574	8	1834	574	8	1834	574	8	1834	574	8	1834	574	8	1834
574	9	1834	574	9	1834	574	9	1834	574	9	1834	574	9	1834	574	9	1834	574	9	1834
574	10	1834	574	10	1834	574	10	1834	574	10	1834	574	10	1834	574	10	1834	574	10	1834
574	11	1834	574	11	1834	574	11	1834	574	11	1834	574	11	1834	574	11	1834	574	11	1834
574	12	1834	574	12	1834	574	12	1834	574	12	1834	574	12	1834	574	12	1834	574	12	1834
574	13	1834	574	13	1834	574	13	1834	574	13	1834	574	13	1834	574	13	1834	574	13	1834
574	14	1834	574	14	1834	574	14	1834	574	14	1834	574	14	1834	574	14	1834	574	14	1834
574	15	1834	574	15	1834	574	15	1834	574	15	1834	574	15	1834	574	15	1834	574	15	1834
574	16	1834	574	16	1834	574	16	1834	574	16	1834	574	16	1834	574	16	1834	574	16	1834
574	17	1834	574	17	1834	574	17	1834	574	17	1834	574	17	1834	574	17	1834	574	17	1834
574	18	1834	574	18	1834	574	18	1834	574	18	1834	574	18	1834	574	18	1834	574	18	1834
574	19	1834	574	19	1834	574	19	1834	574	19	1834	574	19	1834	574	19	1834	574	19	1834
574	20	1834	574	20	1834	574	20	1834	574	20	1834	574	20	1834	574	20	1834	574	20	1834
574	21	1834	574	21	1834	574	21	1834	574	21	1834	574	21	1834	574	21	1834	574	21	1834
574	22	1834	574	22	1834	574	22	1834	574	22	1834	574	22	1834	574	22	1834	574	22	1834
574	23	1834	574	23	1834	574	23	1834	574	23	1834	574	23	1834	574	23	1834	574	23	1834
574	24	1834	574	24	1834	574	24	1834	574	24	1834	574	24	1834	574	24	1834	574	24	1834
574	25	1834	574	25	1834	574	25	1834	574	25	1834	574	25	1834	574	25	1834	574	25	1834
574	26	1834	574	26	1834	574	26	1834	574	26	1834	574	26	1834	574	26	1834	574	26	1834
574	27	1834	574	27	1834	574	27	1834	574	27	1834	574	27	1834	574	27	1834	574	27	1834
574	28	1834	574	28	1834	574	28	1834	574	28	1834	574	28	1834	574	28	1834	574	28	1834
574	29	1834	574	29	1834	574	29	1834	574	29	1834	574	29	1834	574	29	1834	574	29	1834
574	30	1834	574	30	1834	574	30	1834	574	30	1834	574	30	1834	574	30	1834	574	30	1834
574	31	1834	574	31	1834	574	31	1834	574	31	1834	574	31	1834	574	31	1834	574	31	1834
574	32	1834	574	32	1834	574	32	1834	574	32	1834	574	32	1834	574	32	1834	574	32	1834
574	33	1834	574	33	1834	574	33	1834	574	33	1834	574	33	1834	574	33	1834	574	33	1834
574	34	1834	574	34	1834	574	34	1834	574	34	1834	574	34	1834	574	34	1834	574	34	1834
574	35	1834	574	35	1834	574	35	1834	574	35	1834	574	35	1834	574	35	1834	574	35	1834
574	36	1834	574	36	1834	574	36	1834	574	36	1834	574	36	1834	574	36	1834	574	36	1834
574	37	1834	574	37	1834	574	37	1834	574	37	1834	574	37	1834	574	37	1834	574	37	1834
574	38	1834	574	38	1834	574	38	1834	574	38	1834	574	38	1834	574	38	1834	574	38	1834
574	39	1834	574	39	1834	574	39	1834	574	39	1834	574	39	1834	574	39	1834	574	39	1834
574	40	1834	574	40	1834	574	40	1834	574	40	1834	574	40	1834	574	40	1834	574	40	1834
574	41	1834	574	41	1834	574	41	1834	574	41	1834	574	41	1834	574	41	1834	574	41	1834
574	42	1834	574	42	1834	574	42	1834	574	42	1834	574	42	1834	574	42	1834	574	42	1834
574	43	1834	574	43	1834	574	43	1834	574	43	1834	574	43	1834	574	43	1834	574	43	1834
574	44	1834	574	44	1834	574	44	1834	574	44	1834	574	44	1834	574	44	1834	574	44	1834
574	45	1834	574	45	1834	574	45	1834	574	45	1834	574	45	1834	574	45	1834	574	45	1834
574	46	1834	574	46	1834	574	46	1834	574	46	1834	574	46	1834	574	46	1834	574	46	1834
574	47	1834	574	47	1834	574	47	1834	574	47	1834	574	47	1834	574	47	1834	574	47	1834
574	48	1834	574	48	1834	574	48	1834	574	48	1834	574	48	1834	574	48	1834	574	48	1834
574	49	1834	574	49	1834	574	49	1834	574	49	1834	574	49	1834	574	49	1834	574	49	1834
574	50	1834	574	50	1834	574	50	1834	574	50	1834	574	50	1834	574	50	1834	574	50	1834
574	51	1834	574	51	1834	574	51	1834	574	51	1834	574	51	1834	574	51	1834	574	51	1834
574	52	1834	574	52	1834	574	52	1834	574	52	1834	574	52	1834	574	52	1834	574	52	1834
574	53	1834	574	53	1834	574	53	1834	574	53	1834	574	53	1834	574	53	1834	574	53	1834
574	54	1834	574	54	1834	574	54	1834	574	54	1834	574	54	1834	574	54	1834	574	54	1834
574	55	1834	574	55	1834	574	55	1834	574	55	1834	574	55	1834	574	55	1834	574	55	1834



UNION TEXAS
ADRIATIC, INC.
PERMESSO: SERRA
CORNETA, ITALIA
LINE MS-3
SP 91-345
MIGRATION

FIELD PARAMETERS

Date Recorded: AUGUST 1975
Source Type: DYNAMITE
Sample Rate: 4 MS
Record End Time: 6 SECONDS
Near Offset: 50 METRES
Long Offset: 1200 METRES
Gain Mode: LFP
Preamp Gain: 36 DB
Low Cut Filter: 8 HZ
Low Cut Slope: 24 DB/OCTAVE
High Cut Filter: 128 HZ
High Cut Slope: 24 DB/OCTAVE
Notch Filter: OUT
Instruments: SERCEL SN328
Format: 21 TRACK
Number Data Chans: 48
Number Aux Chans: 5

PROCESSING SEQUENCE

PROCESSED BY MAGNOLIA ENERGY SERVICES

REFORMAT TO SEG Y
RELATIVE AMPLITUDE CORRECTION
SURFACE CONSISTENT DECONVOLUTION
SINGLE WINDOW DESIGN
500 MS OPERATOR
24 MS PREDICTIVE GAP
SPECTRAL WHITENING
ELEVATION STATICS
DATHUM= 800 METRES
REPLACEMENT VELOCITY=2000 M/S
VELOCITY ANALYSIS
ONE PER KILOMETRE
SURFACE CONSISTENT RESIDUAL STATICS
VELOCITY ANALYSIS
ONE PER KILOMETRE
SURFACE CONSISTENT RESIDUAL STATICS
DIP MOVEOUT CORRECTION
VELOCITY ANALYSIS
ONE PER KILOMETRE
NORMAL MOVEOUT CORRECTION
MUTE
CDP TRIM STATICS
CMP STACK
MIGRATION
T.V. FILTER
TRACE EQUALIZATION
FXDECON

MAGNOLIA ENERGY SERVICES
10333 Richmond Ave., Suite 200
Houston, Texas 77042

DISPLAY PARAMETERS

Fri Aug 25 16:00:02 1995 Static Shift = 0
Traces/Inches = 17 Inches/Second = 3.937
Bias Percent = 0.65 Clip Limit = 2
Gain Set = 783.969 RMS Amplitude = 1.27556

ADVANCE PROMAX