

UNION TEXAS
ADRIATIC, INC.
PERMESSO: SERRA
CORNETA, ITALIA
LINE MS-1
SP 346-630
MIGRATION

FIELD PARAMETERS

Date Recorded: AUGUST 1975
Source Type: DYNAMITE
Sample Rate: 4 MS.
Record End Time: 6 SECONDS
Long Offset: 1000 METRES
Gain Mode: IFF
Preamp Gain: 36 DB.
Low Cut Filter: 8 HZ
Low Cut Slope: 24 DB/OCTAVE
High Cut Filter: 128 HZ
High Cut Slope: 24 DB/OCTAVE
Notch Filter: OUT
Instruments: SERCEL SN328
Format: 21 TRACK
Number Data Chans: 48
Number Aux Chans: 5

PROCESSING SEQUENCE

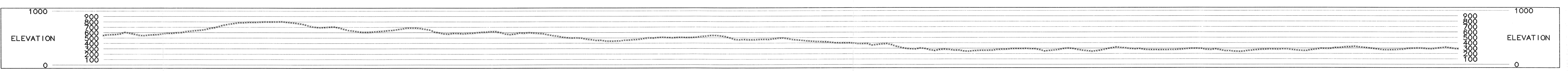
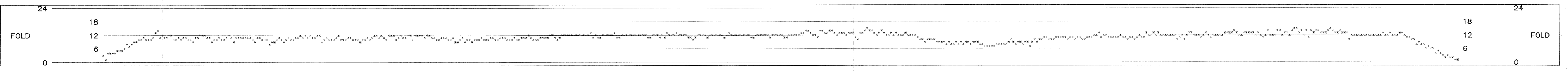
PROCESSED BY MAGNOLIA ENERGY SERVICES

REFORMAT TO SEG-Y
RELATIVE AMPLITUDE CORRECTION
SURFACE CONSISTENT DECONVOLUTION
SINGLE WINDOW DESIGN
200 MS. OPERATOR
24 MS PREDICTIVE GAP
SPECTRAL WHITENING
ELEVATION STATICS
DATUM: 500 METRES
REPLACEMENT VELOCITY: 2000 M/S
VELOCITY ANALYSIS
ONE PER KILOMETRE
SURFACE CONSISTENT RESIDUAL STATICS
VELOCITY ANALYSIS
ONE PER KILOMETRE
SURFACE CONSISTENT RESIDUAL STATICS
DIP MOVEOUT CORRECTION
VELOCITY ANALYSIS
ONE PER KILOMETRE
NORMAL MOVEOUT CORRECTION
MUTE
CMP TRIM STATICS
MIGRATION
CMP STACK
T.V. FILTER
TRACE EQUALIZATION
FIXECON

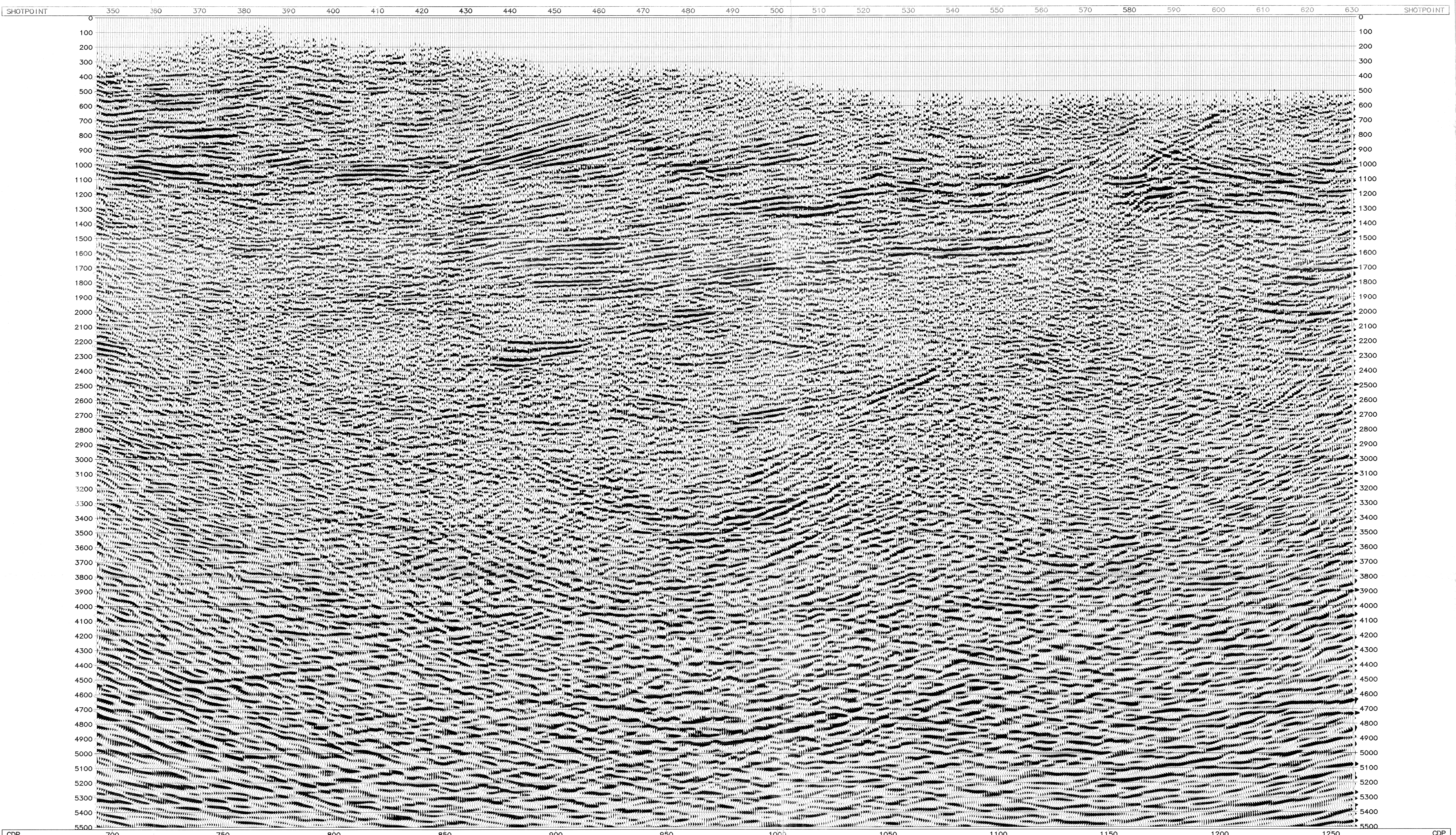
MAGNOLIA ENERGY SERVICES
10333 Richmond Ave., Suite 200
Houston, Texas 77042

DISPLAY PARAMETERS
Fri Aug 25 15:37:40 1995
Traces/Inches = 17
Bias Percent = 0
Gain Set = 0.65
Gain Constant = 784.412

Static Shift = 0
Inches/Second = 3.937
Clip Limit = 2
RMS Amplitude = 1.27484



CDP	TIME	VEL	CDP	TIME	VEL	CDP	TIME	VEL	CDP	TIME	VEL	CDP	TIME	VEL	CDP	TIME	VEL	CDP	TIME	VEL																		
750	0	1917	760	0	1679	830	0	1599	870	0	1917	910	0	1917	950	0	1759	990	0	2082	1030	0	2082	1070	0	2082	1110	0	1917	1150	0	1917	1190	0	1836	1230	0	1679
1917	1917	1917	1679	1679	1679	1599	1599	1599	1917	1917	1917	1759	1759	1759	2082	2082	2082	2082	2082	2082	2082	2082	2082	2082	2082	2082	2082	1917	1917	1917	1836	1836	1836	1679	1679	1679		
1917	1917	1917	1679	1679	1679	1599	1599	1599	1917	1917	1917	1759	1759	1759	2082	2082	2082	2082	2082	2082	2082	2082	2082	2082	2082	2082	2082	1917	1917	1917	1836	1836	1836	1679	1679	1679		
1917	1917	1917	1679	1679	1679	1599	1599	1599	1917	1917	1917	1759	1759	1759	2082	2082	2082	2082	2082	2082	2082	2082	2082	2082	2082	2082	2082	1917	1917	1917	1836	1836	1836	1679	1679	1679		
1917	1917	1917	1679	1679	1679	1599	1599	1599	1917	1917	1917	1759	1759	1759	2082	2082	2082	2082	2082	2082	2082	2082	2082	2082	2082	2082	2082	1917	1917	1917	1836	1836	1836	1679	1679	1679		



UNION TEXAS
ADRIATIC, INC.
PERMESSO: SERRA
CORNETA, ITALIA
LINE MS-1
SP 346-630
MIGRATION

FIELD PARAMETERS

Date Recorded: AUGUST 1975
Source Type: DYNAMITE
Sample Rate: 4 MS.
Record End Time: 6 SECONDS
Long Offset: 1000 METRES
Gain Mode: IFF
Preamp Gain: 36 DB.
Low Cut Filter: 8 HZ
Low Cut Slope: 24 DB/OCTAVE
High Cut Filter: 128 HZ
High Cut Slope: 24 DB/OCTAVE
Notch Filter: OUT
Instruments: SERCEL SN328
Format: 21 TRACK
Number Data Chans: 48
Number Aux Chans: 5

PROCESSING SEQUENCE

PROCESSED BY MAGNOLIA ENERGY SERVICES

REFORMAT TO SEG-Y
RELATIVE AMPLITUDE CORRECTION
SURFACE CONSISTENT DECONVOLUTION
SINGLE WINDOW DESIGN
200 MS. OPERATOR
24 MS PREDICTIVE GAP
SPECTRAL WHITENING
ELEVATION STATICS
DATUM: 500 METRES
REPLACEMENT VELOCITY: 2000 M/S
VELOCITY ANALYSIS
ONE PER KILOMETRE
SURFACE CONSISTENT RESIDUAL STATICS
VELOCITY ANALYSIS
ONE PER KILOMETRE
SURFACE CONSISTENT RESIDUAL STATICS
DIP MOVEOUT CORRECTION
VELOCITY ANALYSIS
ONE PER KILOMETRE
NORMAL MOVEOUT CORRECTION
MUTE
CMP TRIM STATICS
MIGRATION
CMP STACK
T.V. FILTER
TRACE EQUALIZATION
FIXECON

MAGNOLIA ENERGY SERVICES
10333 Richmond Ave., Suite 200
Houston, Texas 77042

DISPLAY PARAMETERS
Fri Aug 25 15:37:41 1995
Traces/Inches = 17
Bias Percent = 0
Gain Set = 0.65
Gain Constant = 784.412

Static Shift = 0
Inches/Second = 3.937
Clip Limit = 2
RMS Amplitude = 1.27484



SEZIONE GEOLOGICA
E GEOMETRIA DI NAPOLI
Evol. in Oup