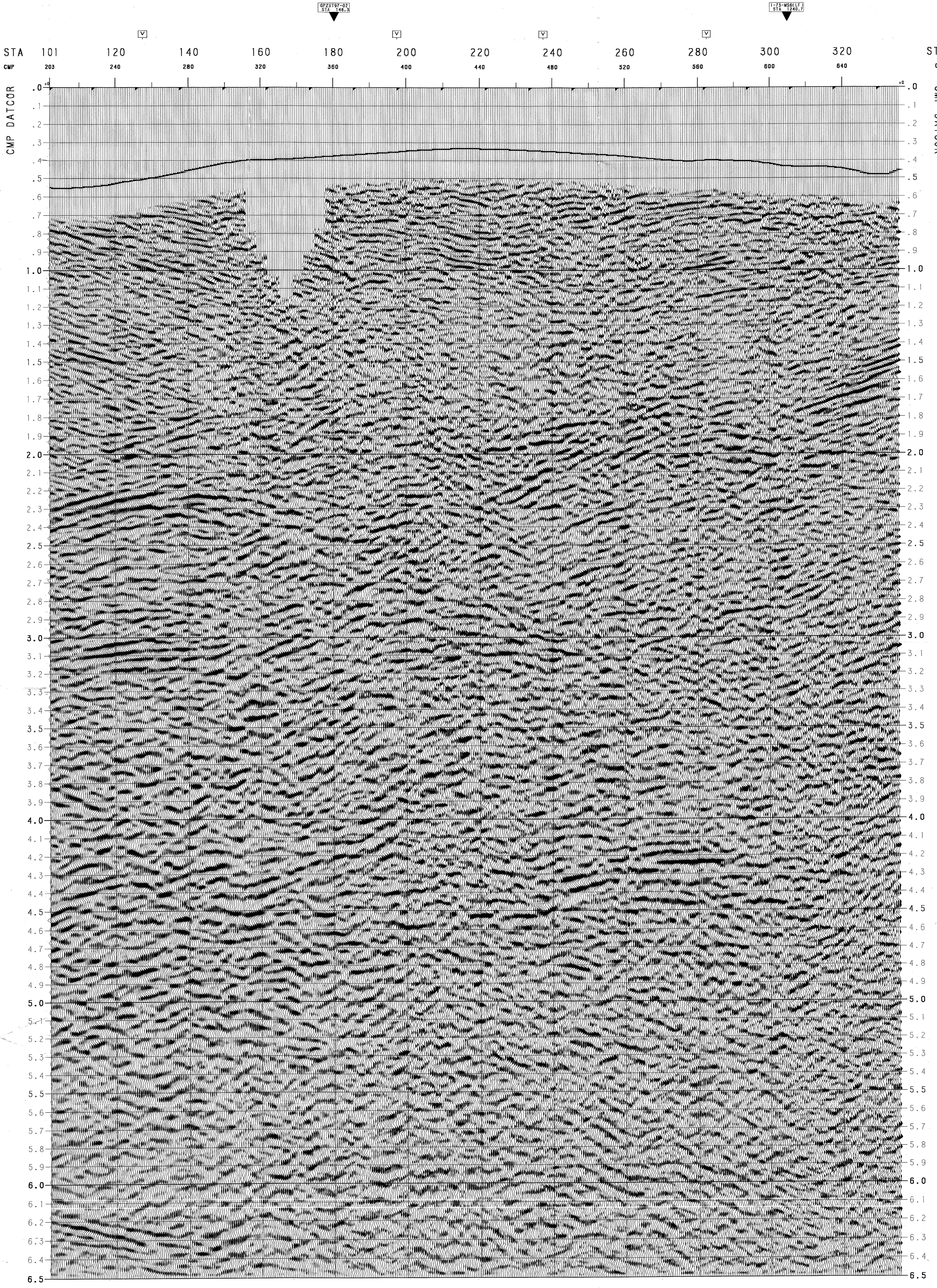
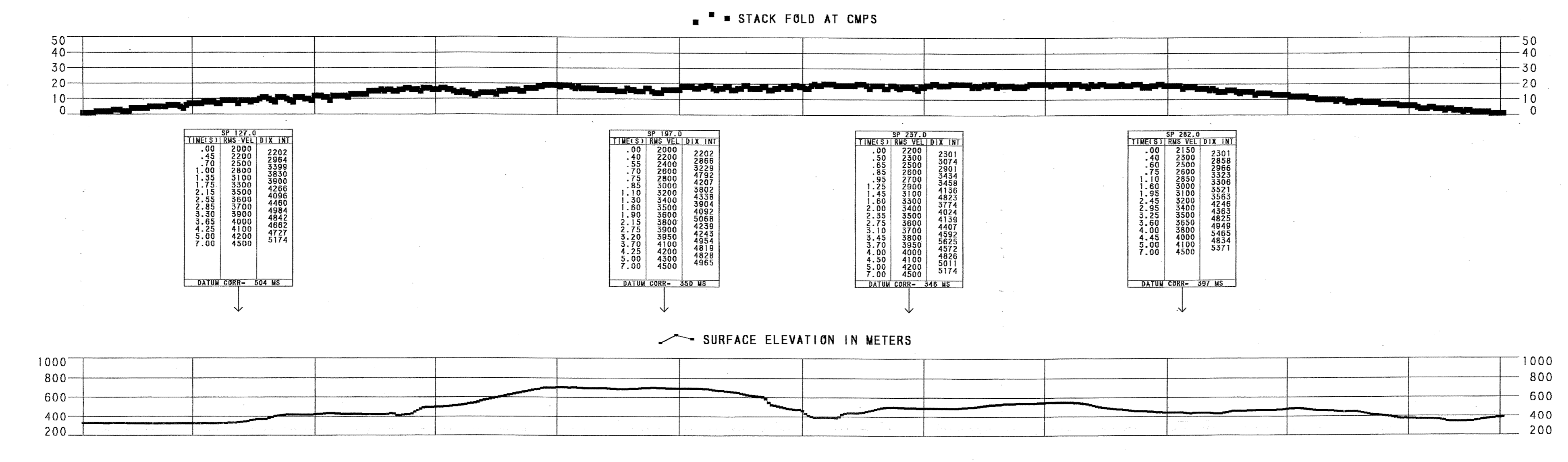


GEOPHYSICAL COPY  
 Made by  
 5/8/98  
 Return only final picked  
 sections for filing.

LINE: GPZUT97-05  
 SP'S: 100-337  
 FINAL STACK  
 POSITIVE POLARITY

LINE: GPZUT97-05  
 SP'S: 100-337  
 FINAL STACK  
 POSITIVE POLARITY



NORTHEAST

**UNION TEXAS ADRIATIC, INC.**

SERRA CORNETA  
 ITALY

REPLACEMENT VELOCITY: 1900 M/SEC  
 DATUM PLANE: 1000 M  
 DATE: 03/23/98  
 BAKERSFIELD PROCESSING CENTER: JOB 41108  
 APPROVED BY: LR/DJC

**RECORDING INFORMATION:**

RECORDED FOR: UNION TEXAS ADRIATIC INC.  
 RECORDED BY: S. J. A. G. S. A.  
 PARTY: 3  
 DATE: AUGUST 5-7, 1997

**SOURCE:**  
 TYPE: DYNAMITE  
 SHOT DEPTH: 30.0 METERS  
 CHARGE: 5-10 KG.  
 SOURCE INTERVAL: 90 METERS  
 PATTERN: SINGLE HOLE

**SPREAD:**  
 NO. OF GROUPS RECORDED: 240  
 COVERAGE: 4000Z  
 STATION INTERVAL: 30 METERS

**SPREAD GEOMETRY:**  
 TRACE: 1-----120 \* 121-----240  
 DISTANCE IN METERS: 2645 72 72 2645  
 DIRECTION: SW

**RECORDING UNIT:**  
 MAKE/MODEL: SN 368 E TELEMETRY  
 JOB: SEC-9 MULTIPLEXED  
 SAMPLE RATE: 2 MS  
 RECORD LENGTH: 7 SECONDS  
 LOW CUT: 17.0 HZ, 72 DB/OCT  
 HIGH CUT: DDT  
 NOTCH FILTER: DDT

**DETECTORS:**  
 TYPE: SENSOR SM-405  
 NATURAL FREQUENCY: 10 HZ  
 NO. OF GEO-STATIONS: 48  
 PATTERN: IN LINE  
 ARRAY LENGTH: 44.88 METERS

**WESTERN ATLAS**  
 Western Geophysical

**PROCESSING SEQUENCE**

PROCESSED BY: WESTERN GEOPHYSICAL, BAKERSFIELD

- SEGD CONVERSION:**  
 PROCESSING SAMPLE RATE: 4 MS  
 PROCESSING RECORD LENGTH: 7 SECONDS
- PRE-PROCESSOR:**  
 GEOMETRY COMPUTATION  
 SPHERICAL DIVERGENCE COMPENSATION  
 CMP SORT
- SURFACE CONSISTENT DECONVOLUTION:**  
 TYPE: WINGAMP PHASE INVERSE FILTER  
 PREDICTIVE DISTANCE: 4 MS  
 OPERATOR LENGTH: 160 MS  
 AUTOCORRELATION WINDOW: 0.30 TO 3.30 SEC.  
 NUMBER OF WINDOWS: 1  
 PREWHITENING: 0.1 X
- TIME VARIANT SPECTRAL WHITENING:**  
 WHITENED FROM 10-90 HZ
- EGM REFRACTION STATICS:**  
 V1-VARIABLE (UPHOLE VELOCITY)  
 TO THE BASE OF SHOT HOLE  
 SUB-HOLE VELOCITY-1500 M/SEC  
 VR-1900 M/SEC  
 DATUM-1000 M
- VELOCITY ANALYSIS:** CONSTANT VELOCITY STACKS
- ZONE ANOMALY PROCESS:** SURFACE CONSISTENT DESPINE
- AUTOMATIC STATICS:** WISER® (SURFACE CONSISTENT)
- VELOCITY ANALYSIS:** CONSTANT VELOCITY STACKS
- DIP MOVEOUT CORRECTION**
- VELOCITY ANALYSIS:** CONSTANT VELOCITY STACKS
- NORMAL MOVEOUT AND FIRST BREAK SUPPRESSION**
- CMP STACK:**  
 STACK FOLD: 4000Z
- RANDOM NOISE ATTENUATION**
- ADAPT PREDICTIVE FILTER:**  
 APPROACH: 80Z  
 CROSS CORRECTION: 1/2 \* 3 MS.
- BANDPASS FILTER:**  
 10 - 48 HZ
- GRIN:**  
 TIME VARIANT TRACE EQUALIZATION  
 1024 MSEC WINDOW

**DISPLAY:**  
 HORIZONTAL SCALE: 10 TRACES PER CENTIMETER  
 VERTICAL SCALE: 10 METERS PER CENTIMETER  
 PLATBACK POLARITY: POSITIVE NUMBER - PEAK

HORIZONTAL SCALE: 1 IN = 390 M.  
 67 TRACE INTERVALS = 1 KM.

1.0 KM.