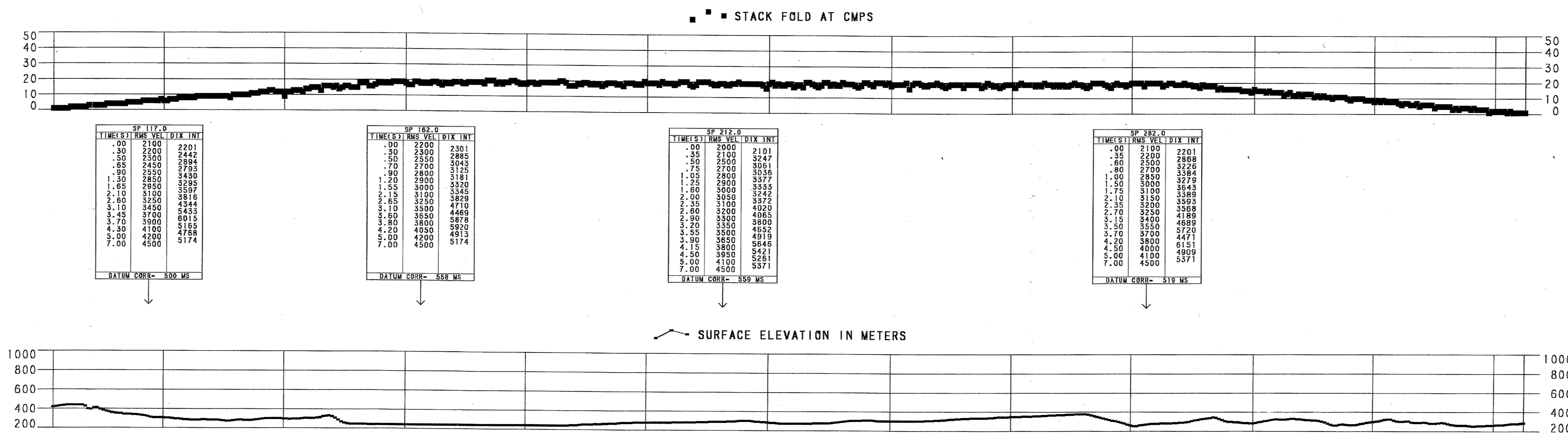
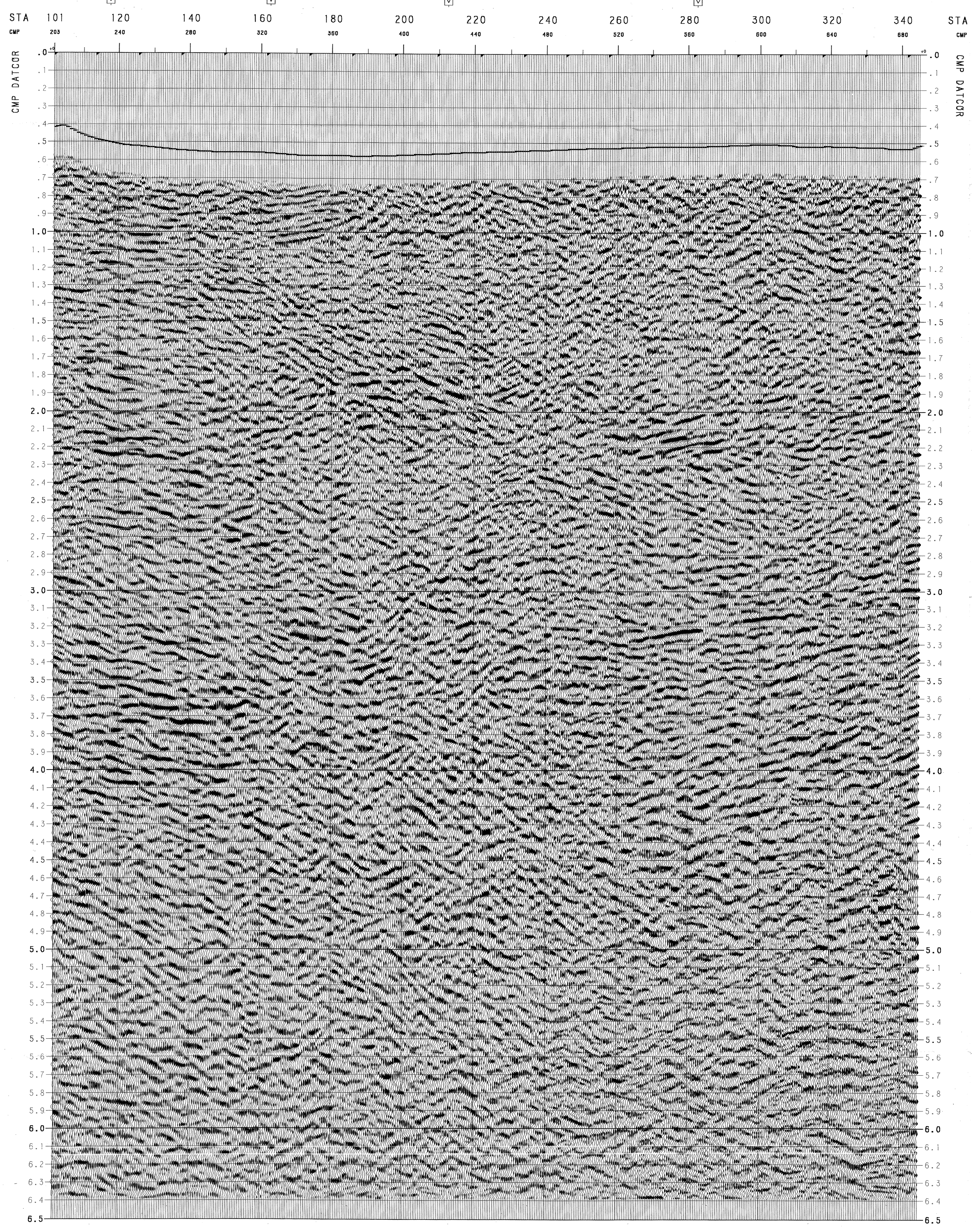


LINE: GPZUT97-04
 SP'S: 100-346
 FINAL STACK
 POSITIVE POLARITY



LINE: GPZUT97-04
 SP'S: 100-346
 FINAL STACK
 POSITIVE POLARITY



SOUTHEAST

UNION TEXAS ADRIATIC, INC.

SIERRA CORNETA
 ITALY

REPLACEMENT VELOCITY: 1900 M/SEC
 DATUM PLANE: 1000 M
 DATE: 03/23/98
 BAKERSFIELD PROCESSING CENTER: JOB #1108
 APPROVED BY: LR/DJC

RECORDING INFORMATION

RECORDED FOR: UNION TEXAS ADRIATIC, INC.
 RECORDED BY: S.I.A.C. S.P.A.
 PARTY: 3
 DATE: JULY 14-17, 1997

SOURCE:
 TYPE: DYNAMITE
 SOURCE DEPTH: 30 METERS
 CHARGE: 5-10 SEC
 SOURCE INTERVAL: 90 METERS
 PATTERN: SINGLE HOLE

SPREAD:
 NO. OF GROUPS RECORDED: 240
 COVERAGE: 4000Z
 STATION INTERVAL: 30 METERS

SPREAD GEOMETRY:
 TRACES: 100 120 140 160 180 200 220 240
 DISTANCE IN METERS: 2845 75 75 3645
 DIRECTION: NW

RECORDING UNIT:
 TYPE: SN 508 E TELEMETRY
 FORMAT: SEG-9 MULTIPLIED
 SAMPLE RATE: 250 HZ
 RECORD LENGTH: 7 SECONDS
 LOW CUT: 0.5 HZ
 HIGH CUT: 177.6 HZ, 72 DB/OCT
 NETS FILTER: DUT

DETECTORS:
 TYPE: SENIOR SM-4HS
 NATURAL FREQUENCY: 10 HZ
 NO. OF GEO./STATION: 48
 PATTERN: IN LINE
 ARRAY LENGTH: 44.88 METERS

Western Geophysical

PROCESSING SEQUENCE

PROCESSED BY: WESTERN GEOPHYSICAL, BAKERSFIELD

1. SEG CONVERSION:
 PROCESSING SAMPLE RATE: 4 MS
 PROCESSING RECORD LENGTH: 7 SECONDS
2. PRE-PROCESSOR:
 GEOMETRY COMPUTATION
 SPHERICAL DIVERGENCE COMPENSATION
 CMP SORT
3. SURFACE CONSISTENT DECONVOLUTION:
 TYPE: W/IN PHASE INVERSE FILTER
 PREDICTIVE DISTANCE: 4 MS
 OPERATOR LENGTH: 160 MS
 AUTOCORRELATION WINDOW: 0.30 TO 3.50 SEC.
 NUMBER OF WINDOWS: 1
 PREWHITENING: 0.1 X
4. TIME VARIANT SPECTRAL WHITENING:
 WHITENED FROM 10-50 HZ
5. EGM REFRACTION STATICS:
 V1-VARIABLE (UPHOLE VELOCITY)
 TO THE BASE OF SHOT HOLE
 V2-1900 M/SEC
 240M/1000 F
6. VELOCITY ANALYSIS: CONSTANT VELOCITY STACKS
7. ZONE ANOMALY PROCESS: SURFACE CONSISTENT DESPKE
8. AUTOMATIC STATICS: WISER* (SURFACE CONSISTENT)
9. VELOCITY ANALYSIS: CONSTANT VELOCITY STACKS
10. DIP MOVEOUT CORRECTION
11. VELOCITY ANALYSIS: CONSTANT VELOCITY STACKS
12. NORMAL MOVEOUT AND FIRST BREAK SUPPRESSION
13. CMP STACK: STACK FOLD
 STACK FOLD: 4000Z
14. RANDOM NOISE ATTENUATION
15. RADIAL PREDICTIVE FILTER:
 AVERAGE: 605
 LONG COEFF: 1/2 3 MS.
16. BANDPASS FILTER:
 10 - 48 HZ
17. GAIN:
 TIME VARIANT TRACE EQUALIZATION
 1024 WEEC WINDOW

DISPLAY:
 HORIZONTAL SCALE: 10 TRACES PER CENTIMETER
 VERTICAL SCALE: 10 CENTIMETERS PER SECOND
 PLOTTING DATE:
 PLAYBACK POLARITY: POSITIVE NUMBER - PEAK

HORIZONTAL SCALE: 1 IN = 300 M.
 67 TRACE INTERVALS = 1 KM.
 1.0 KM.