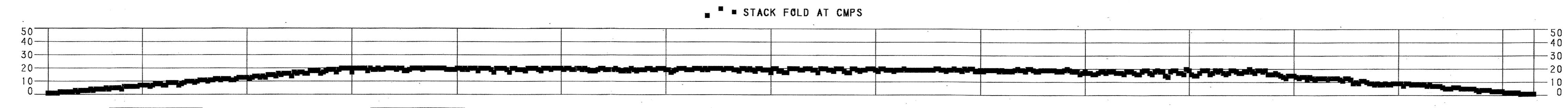
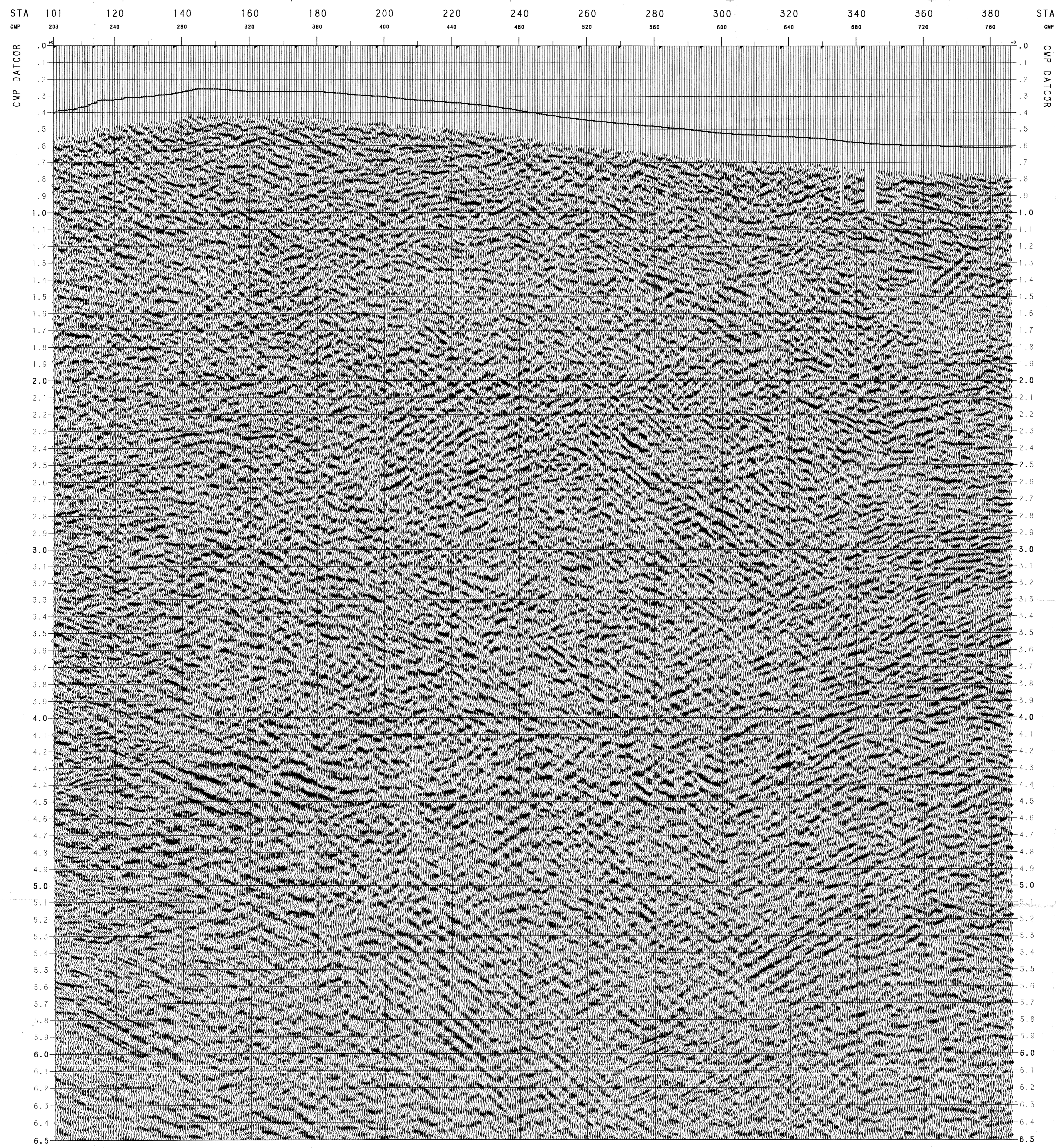
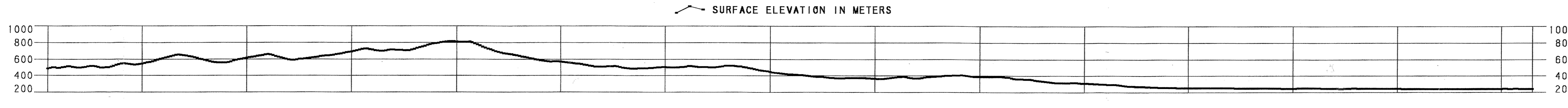


LINE: GPZUT97-03
 SP'S: 100-387
 FINAL STACK
 POSITIVE POLARITY



TIME (SEC)	SP 100	SP 120	SP 140	SP 160	SP 180	SP 200	SP 220	SP 240	SP 260	SP 280	SP 300	SP 320	SP 340	SP 360	SP 380
0.00	2100	2200	2300	2400	2500	2600	2700	2800	2900	3000	3100	3200	3300	3400	3500
0.25	2100	2200	2300	2400	2500	2600	2700	2800	2900	3000	3100	3200	3300	3400	3500
0.50	2100	2200	2300	2400	2500	2600	2700	2800	2900	3000	3100	3200	3300	3400	3500
0.75	2100	2200	2300	2400	2500	2600	2700	2800	2900	3000	3100	3200	3300	3400	3500
1.00	2100	2200	2300	2400	2500	2600	2700	2800	2900	3000	3100	3200	3300	3400	3500
1.25	2100	2200	2300	2400	2500	2600	2700	2800	2900	3000	3100	3200	3300	3400	3500
1.50	2100	2200	2300	2400	2500	2600	2700	2800	2900	3000	3100	3200	3300	3400	3500
1.75	2100	2200	2300	2400	2500	2600	2700	2800	2900	3000	3100	3200	3300	3400	3500
2.00	2100	2200	2300	2400	2500	2600	2700	2800	2900	3000	3100	3200	3300	3400	3500
2.25	2100	2200	2300	2400	2500	2600	2700	2800	2900	3000	3100	3200	3300	3400	3500
2.50	2100	2200	2300	2400	2500	2600	2700	2800	2900	3000	3100	3200	3300	3400	3500
2.75	2100	2200	2300	2400	2500	2600	2700	2800	2900	3000	3100	3200	3300	3400	3500
3.00	2100	2200	2300	2400	2500	2600	2700	2800	2900	3000	3100	3200	3300	3400	3500
3.25	2100	2200	2300	2400	2500	2600	2700	2800	2900	3000	3100	3200	3300	3400	3500
3.50	2100	2200	2300	2400	2500	2600	2700	2800	2900	3000	3100	3200	3300	3400	3500
3.75	2100	2200	2300	2400	2500	2600	2700	2800	2900	3000	3100	3200	3300	3400	3500
4.00	2100	2200	2300	2400	2500	2600	2700	2800	2900	3000	3100	3200	3300	3400	3500
4.25	2100	2200	2300	2400	2500	2600	2700	2800	2900	3000	3100	3200	3300	3400	3500
4.50	2100	2200	2300	2400	2500	2600	2700	2800	2900	3000	3100	3200	3300	3400	3500
4.75	2100	2200	2300	2400	2500	2600	2700	2800	2900	3000	3100	3200	3300	3400	3500
5.00	2100	2200	2300	2400	2500	2600	2700	2800	2900	3000	3100	3200	3300	3400	3500



LINE: GPZUT97-03
 SP'S: 100-387
 FINAL STACK
 POSITIVE POLARITY

NORTHEAST

UNION TEXAS ADRIATIC, INC.

**SERRA CORNETA
ITALY**

REPLACEMENT VELOCITY: 1000 M/SEC
 DATUM PLANE: 1000 M
 DATE: 03/23/98
 BAKERSFIELD PROCESSING CENTER: JOB #1108
 APPROVED BY: LB/DJC

RECORDING INFORMATION

RECORDING INFORMATION:
 RECORDED FOR: UNION TEXAS ADRIATIC INC.
 RECORDED BY: S.L.A.C. S.L.A.
 PARTY: 3
 DATE: JULY 18-25, 1997

SOURCE:
 TYPE: DYNAMITE
 SHOT DEPTH: 30.2 METERS
 CHARGE: 5.0 KG
 SOURCE INTERVAL: 90 METERS
 PATTERN: SINGLE HOLE

SPREAD:
 NO. OF GROUPS RECORDED: 240
 COVERAGE: 400X
 STATION INTERVAL: 30 METERS

SPREAD GEOMETRY:
 TRACK: 1-----120 + 121-----240
 DISTANCE IN METERS: 3645 75 75 3645
 DIRECTION: SW NE

RECORDING UNIT:
 MAKE/MODEL: SR 368 6 TELEMETRY
 FORM: 368 6 MULTIFLEX
 SAMPLE RATE: 2 MS
 RECORD LENGTH: 7 SECONDS
 LOW CUT: 0.05
 HIGH CUT: 177.5 HZ, 72 DB/OCT
 NOTCH FILTER: OUT

DETECTORS:
 TYPE: SENSOR SM-4HS
 NO. OF GEO./STATION: 48
 PATTERN: 18 LINE
 ARRAY LENGTH: 44.88 METERS

Western Geophysical

PROCESSING SEQUENCE

PROCESSED BY: WESTERN GEOPHYSICAL, BAKERSFIELD

1. SEG CONVERSION
 PROCESSING SAMPLE RATE: 4 MS
 PROCESSING RECORD LENGTH: 7 SECONDS
2. PRE-PROCESSOR
 GEOMETRY COMPUTATION
 SPHERICAL DIVERGENCE COMPENSATION
 CMP SORT
3. SURFACE CONSISTENT DECONVOLUTION:
 TYPE: MINIMUM PHASE INVERSE FILTER
 PREDICTIVE DISTANCE: 4 MS
 OPERATOR LENGTH: 160 MS
 AUTOCORRELATION WINDOW: 0.30 TO 3.50 SEC.
 NUMBER OF WINDOWS: 1
 PREWHITENING: 0.1 X
4. TIME VARIANT SPECTRAL WHITENING:
 WHITENED FROM 10-40 Hz
5. EGM REFRACTION STATICS:
 VELOCITY: 1000 M/SEC
 TO THE BASE OF SHOT HOLE
 VELOCITY: 1500 M/SEC
 VELOCITY: 1500 M/SEC
 DATUM: 1000 M
6. VELOCITY ANALYSIS: CONSTANT VELOCITY STACKS
7. ZONE ANOMALY PROCESS: SURFACE CONSISTENT DESPIKE
8. AUTOMATIC STATICS: WISER (SURFACE CONSISTENT)
9. VELOCITY ANALYSIS: CONSTANT VELOCITY STACKS
10. DIP MOVEOUT CORRECTION
11. VELOCITY ANALYSIS: CONSTANT VELOCITY STACKS
12. NORMAL MOVEOUT AND FIRST BREAK SUPPRESSION
13. CMP STACK
 STACK FOLD: 400X
14. RANDOM NOISE ATTENUATION
15. RADIAL PREDICTIVE FILTER:
 ADDRESS: 40X
 EDGE CUTOFF: +/- 3 MS.
16. BANDPASS FILTER:
 10 - 45 HZ
17. GRIN:
 TIME VARIANT TRACE EQUALIZATION
 100X MSEC WINDOW

DISPLAY:
 HORIZONTAL SCALE: 10 TRACES PER CENTIMETER
 VERTICAL SCALE: 10 CENTIMETERS PER SECOND
 PLAYBACK POLARITY: POSITIVE NUMBER - PEAK

HORIZONTAL SCALE: 1 IN = 390 M
 67 TRACE INTERVALS = 1 KM.
 1.0 KM.