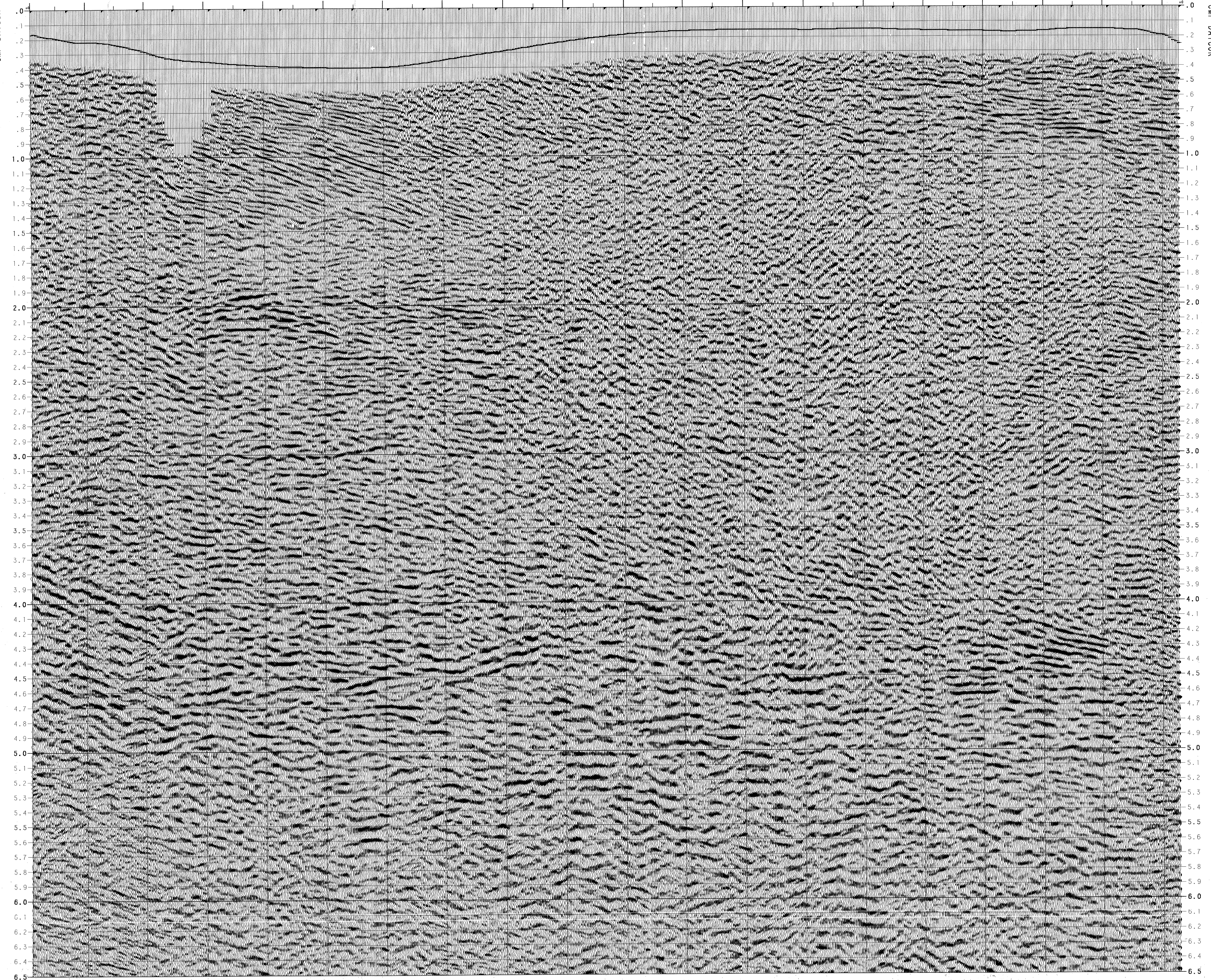
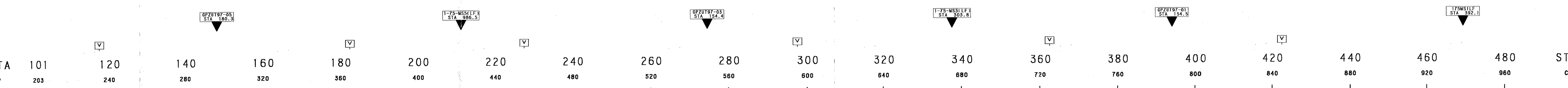
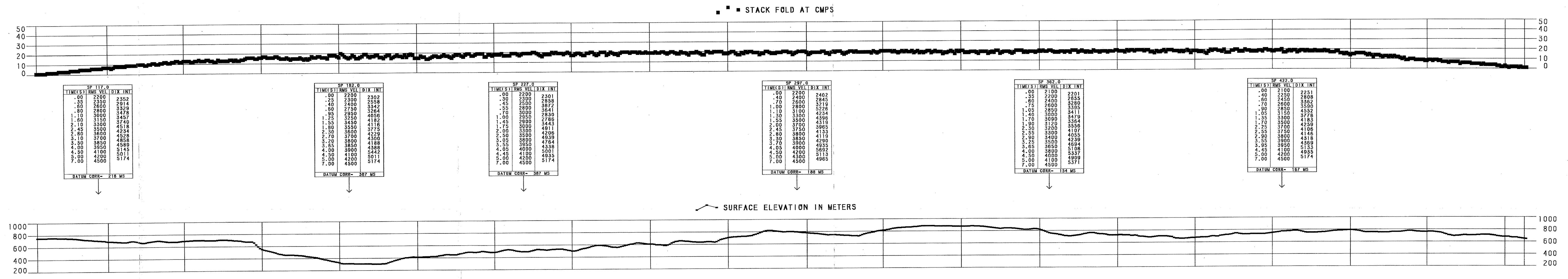


LINE: GPZUT97-02  
 SP'S: 100-487  
 FINAL STACK  
 POSITIVE POLARITY

Printed by:  
 File Name:  
 Returns only the sections for this



LINE: GPZUT97-02  
 SP'S: 100-487  
 FINAL STACK  
 POSITIVE POLARITY

SOUTHEAST

**UNION TEXAS ADRIATIC, INC.**

**SERRA CORNETA  
 ITALY**

REPLACEMENT VELOCITY: 1000 M/SEC  
 DATUM PLANE: 1000 M  
 DATE: 03/23/98  
 BAKERSFIELD PROCESSING CENTER: JED #1108  
 APPROVED BY: LR/JJC

**RECORDING INFORMATION:**

RECORDED FOR: UNION TEXAS ADRIATIC INC.  
 RECORDED BY: S.C.A.  
 DATE: JULY 29-AUGUST 4, 1997

**SOURCE:**  
 TYPE: DYNAMITE  
 SHOT DEPTH: 30.0 METERS  
 CHARGE: C-10  
 SOURCE INTERVAL: 90 METERS  
 PATTERN: SINGLE WIRE

**SPREAD:**  
 NO. OF GROUPS RECORDED: 240  
 COVERAGE: 4000Z  
 STATION INTERVAL: 30 METERS

**SPREAD GEOMETRY:**  
 TRACK: 1-----120 \* 121-----240  
 DISTANCE IN METERS: 240 75 75 240  
 DIRECTION: NW

**RECORDING UNIT:**  
 MANUFACTURER: SN 388 E TELEMETRY  
 MODEL: 388-9 MULTIPLEXER  
 SAMPLE RATE: 2 SEC  
 RECORD LENGTH: 7 SECONDS  
 LOW CUT: 0.5 HZ  
 HIGH CUT: 177.5 HZ, 72 DB/OCT  
 NOTCH FILTER: 0.01

**DETECTORS:**  
 TYPE: SENSOR SM-415  
 NO. OF DET./STATION: 48  
 PATTERN: 1A LINE  
 ARRAY LENGTH: 44.88 METERS

**Western Geophysical**

**PROCESSING SEQUENCE**

PROCESSED BY: WESTERN GEOPHYSICAL, BAKERSFIELD

1. SEG CONVERSION  
 PROCESSING SAMPLE RATE: 4 MS  
 PROCESSING RECORD LENGTH: 7 SECONDS
2. PRE-PROCESSOR  
 GAIN BY COMPUTATION  
 SPHERICAL DIVERGENCE COMPENSATION  
 CMP COR
3. SURFACE CONSISTENT DECONVOLUTION  
 PREDICTIVE DISTANCE: 4 MS  
 PREDICTOR LENGTH: 200 MS  
 AUTOCORRELATION WINDOW: 0.50 TO 3.50 SEC.  
 NUMBER OF WINDOWS: 3  
 PREWHITENING: 0.1 X
4. TIME VARIANT SPECTRAL WHITENING  
 WHITENS FROM 10-50 HZ
5. EGM REFRACTION STATICS  
 VARIABLE VELOCITY  
 TO THE BASE OF SHOT HOLD  
 SURF. VELOCITY: 1000 M/SEC  
 VELOCITY GRADE  
 DATUM: 1000 M
6. VELOCITY ANALYSIS: CONSTANT VELOCITY STACKS
7. ZONE ANOMALY PROCESS: SURFACE CONSISTENT DECONV.
8. AUTOMATIC STATICS: MUSEUM (SURFACE CONSISTENT)
9. VELOCITY ANALYSIS: CONSTANT VELOCITY STACKS
10. DIP MOVEOUT CORRECTION
11. VELOCITY ANALYSIS: CONSTANT VELOCITY STACKS
12. NORMAL MOVEOUT AND FIRST BREAK SUPPRESSION
13. CMP STACK  
 STACK FOLD: 4000Z
14. RANDOM NOISE ATTENUATION
15. ADAPT. PREDICTIVE FILTER  
 ADAPT. COEFF: 0.02  
 TIME CORP.: 177.5 HZ
16. BANDPASS FILTER:  
 0.5 HZ  
 177.5 HZ
17. GAIN:  
 TIME VARIANT TRACE EQUALIZATION  
 10X MISC WINDOW

**DISPLAY:**  
 HORIZONTAL SCALE: 10 CM = 300 M  
 VERTICAL SCALE: 1 CM = 100 M  
 PLAYBACK POLARITY: POSITIVE NUMBER - PEAK

HORIZONTAL SCALE: 1 IN = 300 M  
 67 TRACE INTERVALS = 1 KM.  
 1.0 KM.