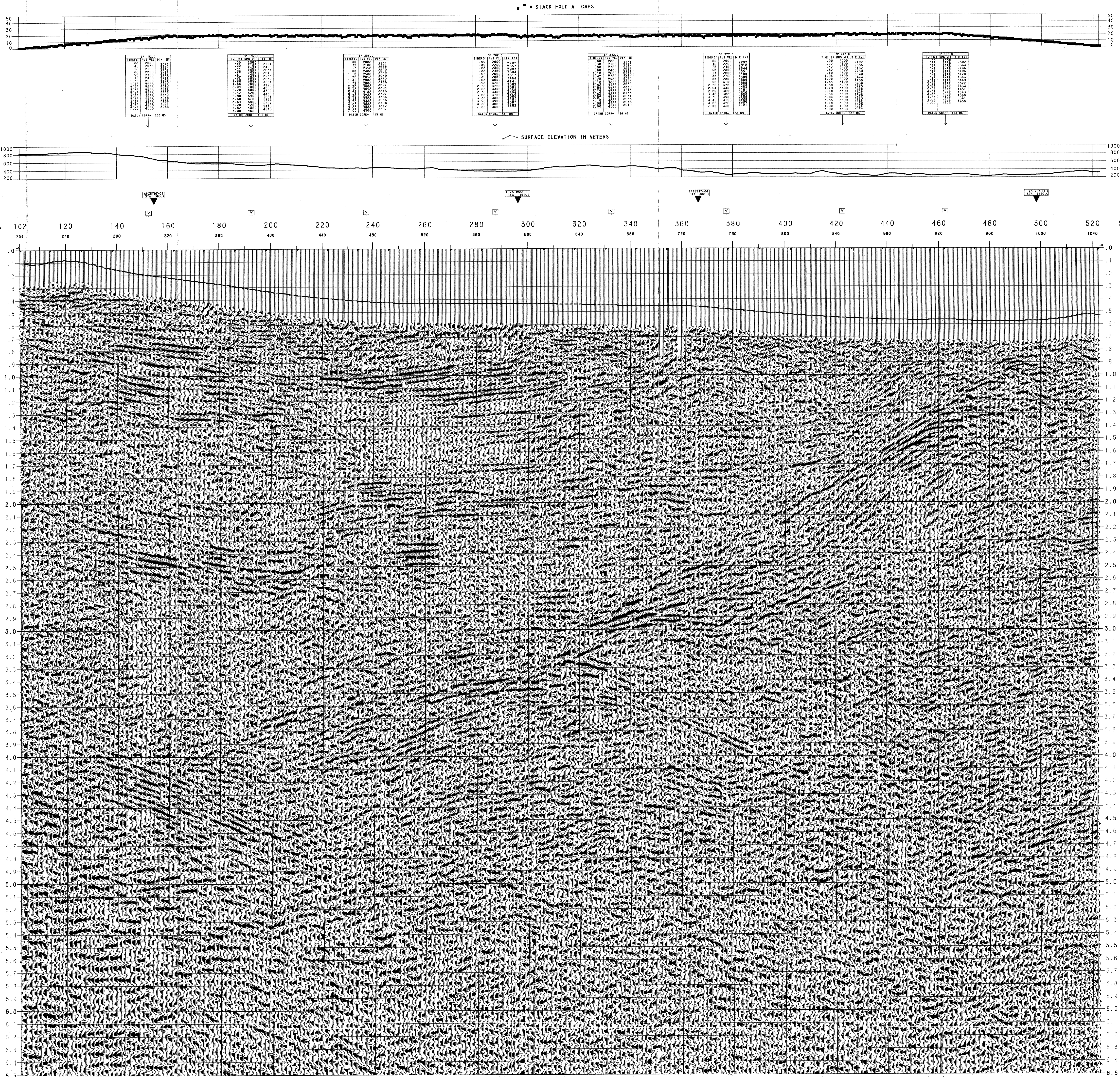


LINE: GPZUT97-01  
 SP'S: 101-523  
 FINAL STACK  
 POSITIVE POLARITY



LINE: GPZUT97-01  
 SP'S: 101-523  
 FINAL STACK  
 POSITIVE POLARITY

NORTHEAST

**UNION TEXAS ADRIATIC, INC.**

**SERRA CORNETA  
 ITALY**

REPLACEMENT VELOCITY: 1900 M/SEC  
 DATUM PLANE: 1000 M  
 DATE: 03/23/98  
 BAKERSFIELD PROCESSING CENTER: JOB #1108  
 APPROVED BY: L.R.D.J.C.

**RECORDING INFORMATION**

RECORDED FOR: UNION TEXAS ADRIATIC INC.  
 RECORDED BY: S. J. A. S. A.  
 DATE: JULY 3-11, 1997

SOURCE:  
 TYPE: DYNAMITE  
 SHOT DEPTH: 30.0 METERS  
 CHARGE: 210 KG  
 CHARGE INTERVAL: 60 METERS  
 PATTERN: SINGLE HOLE

SPREAD:  
 NO. OF GROUPS RECORDED: 240  
 STATION INTERVAL: 30 METERS

SPREAD GEOMETRY:  
 TRACKS: 120 x 120  
 TRACK SPACING: 30 M

RECORDING UNIT:  
 MODEL: SR 500 TELEMETRY  
 SERIAL: 1000  
 SAMPLE RATE: 250 HZ  
 RECORD LENGTH: 2 SECONDS  
 HIGH CUT: 100 HZ  
 FILTER: 100 HZ, 72 DB/OCT

DETECTORS:  
 TYPE: SENSON SM-400  
 SERIAL: 1000  
 NO. OF GEO-STATIONS: 240  
 PATTERN: IN LINE  
 HOLE LENGTH: 60 METERS

**WESTERN  
 ATLAS**

**PROCESSING SEQUENCE**

PROCESSED BY: WESTERN GEOPHYSICAL, BAKERSFIELD

1. SEG-B CONVERSION  
 PROCESSING SAMPLE RATE: 4 MS  
 PROCESSING RECORD LENGTH: 7 SECONDS
2. PRE-PROCESSOR:  
 GEOMETRY COMPUTATION  
 SURFACE SINCERITY COMPENSATION  
 CMP SORT
3. SURFACE CONSISTENT DECONVOLUTION:  
 PREDICTIVE DISTANCE: MINIMUM PHASE INVERSE FILTER  
 OPERATOR LENGTH: 40 MS  
 AUTOCORRELATION WINDOW: 0.30 TO 3.00 SEC.  
 NUMBER OF WINDOWS: 6.1 X
4. TIME VARIANT SPECTRAL WHITENING:  
 WHITENING FROM 10-40 TO 100 HZ
5. EGM REFRACTION STATICS:  
 SURFACE CONSISTENT DESPIKE  
 TO THE BASE OF SHOT HOLE  
 SURFACE VELOCITY: 1900 M/SEC  
 VELOCITY ERROR: 10%  
 VELOCITY WINDOW: 1000 M
6. VELOCITY ANALYSIS: CONSTANT VELOCITY STACKS
7. ZONE RADIALLY PROCESS:  
 SURFACE CONSISTENT DESPIKE  
 VELOCITY WINDOW: 1000 M
8. VELOCITY ANALYSIS: SURFACE CONSISTENT
9. VELOCITY ANALYSIS: CONSTANT VELOCITY STACKS
10. DIP MOVEOUT CORRECTION
11. VELOCITY ANALYSIS: CONSTANT VELOCITY STACKS
12. NORMAL MOVEOUT AND FIRST BREAK SUPPRESSION
13. CMP STACK:  
 STACK FOLD: 1000X
14. RANDOM NOISE ATTENUATION
15. RADIAL PREDICTIVE FILTER:  
 ADDRESS: 30X  
 EDGE CUTOFF: 400 HZ
16. BANDPASS FILTER:  
 10 - 40 HZ
17. GAIN:  
 VELOCITY WINDOW LOCALIZATION  
 10X MSEC WINDOW

**DISPLAY:**  
 HORIZONTAL SCALE: 10 TRACES PER 100 METERS  
 VERTICAL SCALE: 10 METERS PER 100 METERS  
 POLARITY: POSITIVE NUMBER = PEAK

HORIZONTAL SCALE: 1 IN = 390 M  
 OF TRACE INTERVALS = 1 KM  
 1.0 KM