

LINE SC-03-78 REGIONE IDROCARB. S.P. 100 S.P. 397

75% DBS - TVF

SNIA AREA SCALA COELI WESTERN DIVISIONE MINERARIA PROSPECT CALABRIA RICERCHE GEOFISICHE s.p.a.

RECORDING DATA PLAYBACK DATA

SHOT BY: SIAC, PARTY: 780207, MAGNETIC RECORDER: DES-W, SAMPLE RATE: 2 ms, RECORD LENGTH: 5000 ms, FILTER: 12 Hz, ALIASING FILTER: 12 Hz, SUBSURFACE COVERAGE: 75%, DATE: NOV. 1978, JAN. 1979

FIELD DATA SKETCH

SPREAD CONFIGURATION: 1475 - 50 - 1475 m

ENERGY SOURCE: DYNAMITE, SHOT HOLES / S.P.: 10, AVERAGE CHARGE / SHOT: 24.27 m

GEOPHONE PATTERN: GROUP INTERVAL: 50 m, GEOPHONES / GROUP: 24, GEOPHONE FREQUENCY: 10 Hz

PROCESSING

TRANSCRIPTION, EDIT DEMULTIPLEX ONLY, CORRELATION, PREPROCESSOR, DYNAMIC CORRECTION, STATIC CORRECTIONS, PRELIMINARY STACK, 100% CORRECTED, VELOCITY ANALYSIS, CONSTANT VELOCITY STK

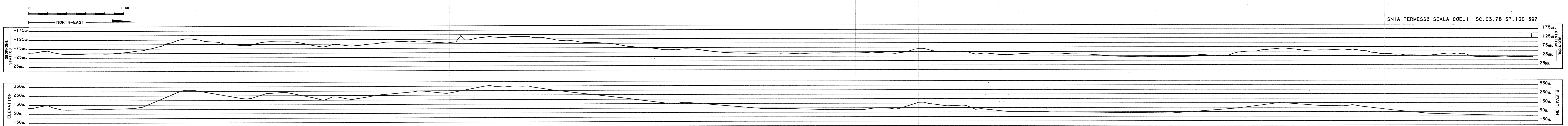
PREDICTIVE TIME DOMAIN DECON, AFTER STACK

3 PREFILTER, 9 FILTER AFTER STK

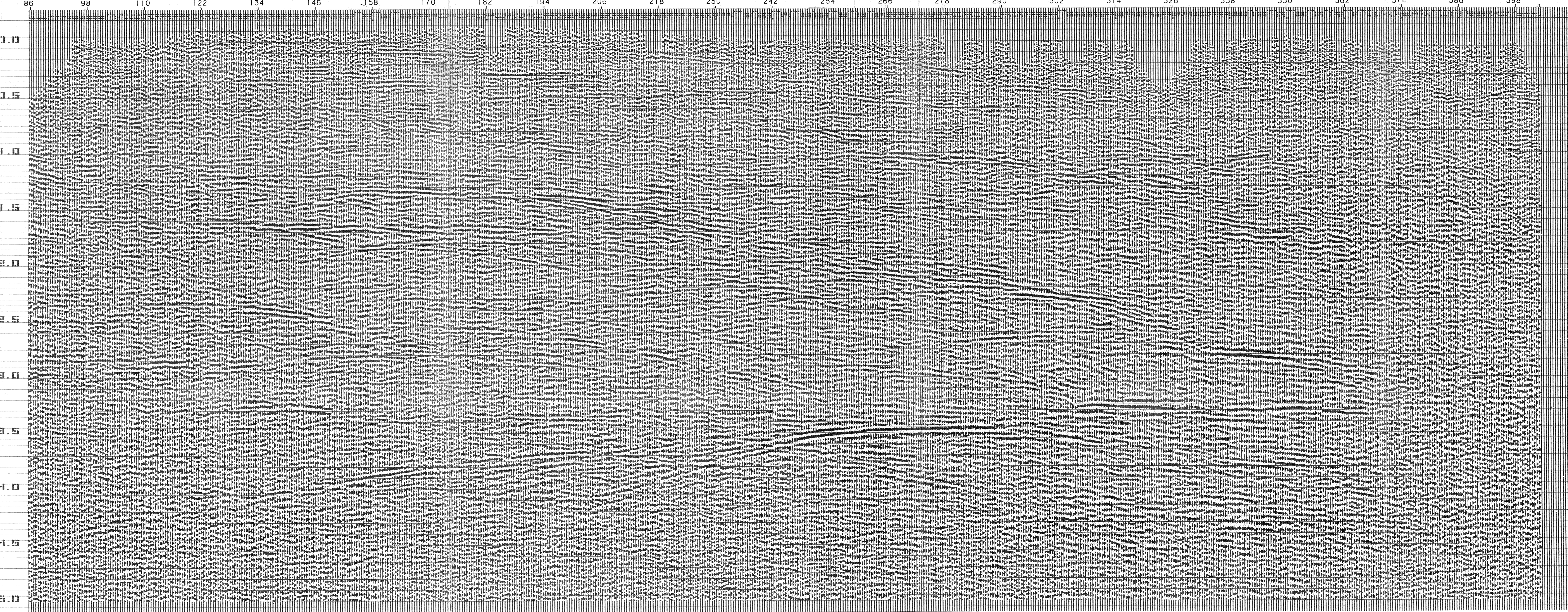
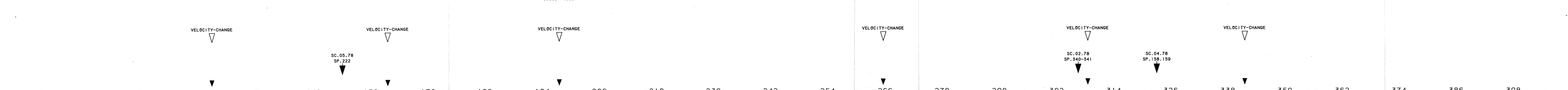
VELOCITY FUNCTION CHANGE, INTERSECTION, VELOCITY ANALYSIS LOCATION

Map showing line locations: SC-02-78, SC-03-78, SC-04-78, SC-05-78, CARIATI, TERRAVECCHIA, OPIUCOLI, MARE JONIO

ANALYST: [Signature]



Velocity tables with columns: TIME, VEL. Values range from 0.004 to 5.300 and 2700 to 4300.



SNIA PERMESSO SCALA COELI SC. 03.78 SP. 100-397