

LINE : C-518
SHOT POINTS : 250 - 578
AREA : LAMPEDUSA
LOCATION : OFFSHORE SICILY

12 FOLD MIGRATION

RECORDING PARAMETERS

RECORDED BY: WESTERN GEOPHYSICAL
SOURCE: AIR GUN
RECORD LENGTH: 5 SEC.
SHOT INTERVAL: 70 METERS
NEAR OFFSET: 230 METER
CHANNELS/RECORD: 24

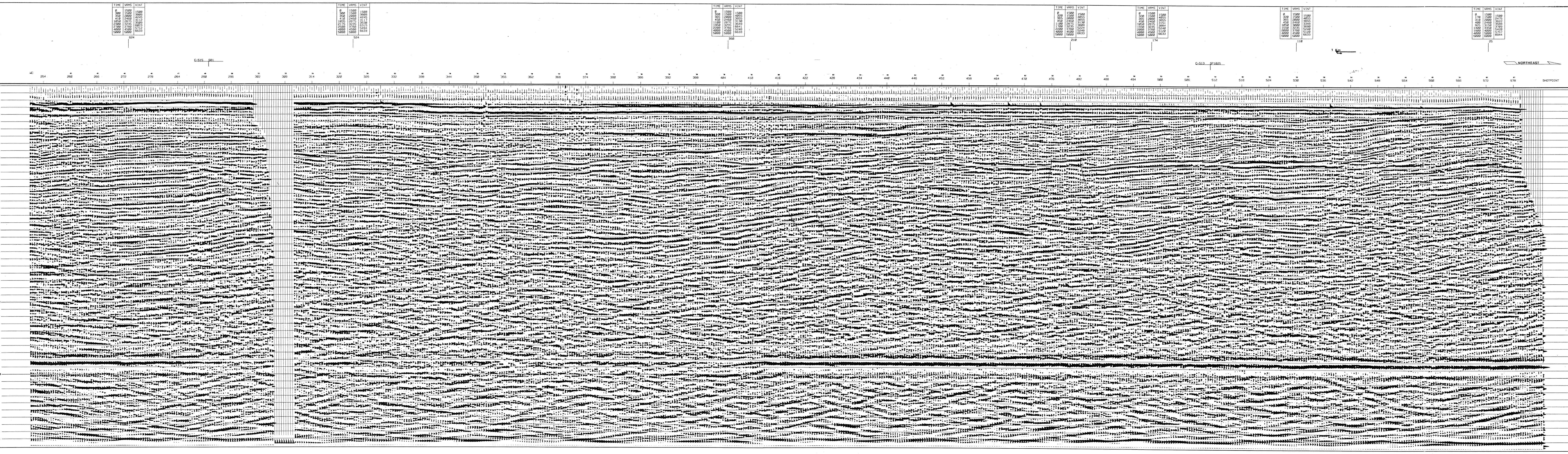
PROCESSING SEQUENCE AND PARAMETERS

DATE PROCESSED: JUNE 1983
1. DEMULTIPLY
2. SPHERICAL DIVERGENCE AND EXPONENTIAL GAIN
3. TRACE EDIT
4. 2 TO 1 SUM
5. DECONVOLUTION
PREDICTIVE DISTANCE: 20 MS
OPERATIONAL LENGTH: 1250 FEET
DATES: NEAR OFFSET: 230 METER
FAR OFFSET: 1000 METER
6. COP: 500
7. VELOCITY ANALYSIS
8. NORMAL MOVEOUT CORRECTION
9. NUT: 1000 HZ
10. STACK: 2 TO 1
11. VSTACK: 2 TO 1
12. ENHANCE
13. FILTER: 10/20 HZ
14. MIGRATION
15. AMPLITUDE EQUALIZATION (500 PSEC)
16. PLOT

DISPLAY PARAMETERS

TRACE/SCH: 17.3 CH/SEC: 15
POLARITY: NORMAL BLACK PEAKS ARE POSITIVE

PROCESSED BY: GEOPHYSICAL DEVELOPMENT CORPORATION
HOUSTON, TEXAS



TIME VRMS VINT table with values for 0, 100, 200, 300, 400, 500, 600, 700, 800, 900, 1000, 1100, 1200, 1300, 1400, 1500, 1600, 1700, 1800, 1900, 2000, 2100, 2200, 2300, 2400, 2500, 2600, 2700, 2800, 2900, 3000, 3100, 3200, 3300, 3400, 3500, 3600, 3700, 3800, 3900, 4000, 4100, 4200, 4300, 4400, 4500, 4600, 4700, 4800, 4900, 5000.

TIME VRMS VINT table with values for 0, 100, 200, 300, 400, 500, 600, 700, 800, 900, 1000, 1100, 1200, 1300, 1400, 1500, 1600, 1700, 1800, 1900, 2000, 2100, 2200, 2300, 2400, 2500, 2600, 2700, 2800, 2900, 3000, 3100, 3200, 3300, 3400, 3500, 3600, 3700, 3800, 3900, 4000, 4100, 4200, 4300, 4400, 4500, 4600, 4700, 4800, 4900, 5000.

TIME VRMS VINT table with values for 0, 100, 200, 300, 400, 500, 600, 700, 800, 900, 1000, 1100, 1200, 1300, 1400, 1500, 1600, 1700, 1800, 1900, 2000, 2100, 2200, 2300, 2400, 2500, 2600, 2700, 2800, 2900, 3000, 3100, 3200, 3300, 3400, 3500, 3600, 3700, 3800, 3900, 4000, 4100, 4200, 4300, 4400, 4500, 4600, 4700, 4800, 4900, 5000.

TIME VRMS VINT table with values for 0, 100, 200, 300, 400, 500, 600, 700, 800, 900, 1000, 1100, 1200, 1300, 1400, 1500, 1600, 1700, 1800, 1900, 2000, 2100, 2200, 2300, 2400, 2500, 2600, 2700, 2800, 2900, 3000, 3100, 3200, 3300, 3400, 3500, 3600, 3700, 3800, 3900, 4000, 4100, 4200, 4300, 4400, 4500, 4600, 4700, 4800, 4900, 5000.

TIME VRMS VINT table with values for 0, 100, 200, 300, 400, 500, 600, 700, 800, 900, 1000, 1100, 1200, 1300, 1400, 1500, 1600, 1700, 1800, 1900, 2000, 2100, 2200, 2300, 2400, 2500, 2600, 2700, 2800, 2900, 3000, 3100, 3200, 3300, 3400, 3500, 3600, 3700, 3800, 3900, 4000, 4100, 4200, 4300, 4400, 4500, 4600, 4700, 4800, 4900, 5000.

TIME VRMS VINT table with values for 0, 100, 200, 300, 400, 500, 600, 700, 800, 900, 1000, 1100, 1200, 1300, 1400, 1500, 1600, 1700, 1800, 1900, 2000, 2100, 2200, 2300, 2400, 2500, 2600, 2700, 2800, 2900, 3000, 3100, 3200, 3300, 3400, 3500, 3600, 3700, 3800, 3900, 4000, 4100, 4200, 4300, 4400, 4500, 4600, 4700, 4800, 4900, 5000.

TIME VRMS VINT table with values for 0, 100, 200, 300, 400, 500, 600, 700, 800, 900, 1000, 1100, 1200, 1300, 1400, 1500, 1600, 1700, 1800, 1900, 2000, 2100, 2200, 2300, 2400, 2500, 2600, 2700, 2800, 2900, 3000, 3100, 3200, 3300, 3400, 3500, 3600, 3700, 3800, 3900, 4000, 4100, 4200, 4300, 4400, 4500, 4600, 4700, 4800, 4900, 5000.

TIME VRMS VINT table with values for 0, 100, 200, 300, 400, 500, 600, 700, 800, 900, 1000, 1100, 1200, 1300, 1400, 1500, 1600, 1700, 1800, 1900, 2000, 2100, 2200, 2300, 2400, 2500, 2600, 2700, 2800, 2900, 3000, 3100, 3200, 3300, 3400, 3500, 3600, 3700, 3800, 3900, 4000, 4100, 4200, 4300, 4400, 4500, 4600, 4700, 4800, 4900, 5000.

TIME VRMS VINT table with values for 0, 100, 200, 300, 400, 500, 600, 700, 800, 900, 1000, 1100, 1200, 1300, 1400, 1500, 1600, 1700, 1800, 1900, 2000, 2100, 2200, 2300, 2400, 2500, 2600, 2700, 2800, 2900, 3000, 3100, 3200, 3300, 3400, 3500, 3600, 3700, 3800, 3900, 4000, 4100, 4200, 4300, 4400, 4500, 4600, 4700, 4800, 4900, 5000.